

MILL LANE OVERSLEY GREEN ALCESTER



A splendid example of a tastefully refurbished and nicely proportioned detached bungalow, boasting delightful open aspect countryside views to the rear elevation, and being located within a highly desirable Warwickshire Hamlet. Having permitted development for a single storey pitched roof extension and the beautifully presented accommodation comprises: Extended reception hallway, newly fitted contemporary style open-plan lounge/kitchen/diner, three bedrooms, newly fitted en-suite shower room and newly fitted additional shower room. Landscaped gardens to front and rear, sweeping driveway providing parking for several vehicles, double gated side entrance, additional parking area for motorhome and double detached garage with power and lighting. Offered with no upward chain. EPC rating C.

£725,000

Silverdale, Mill Lane, Oversley Green, Alcester, B49 6LF

Extended Reception Hallway



Lounge/Kitchen/Diner

11.08m (36'4") x 3.71m (12'2") max



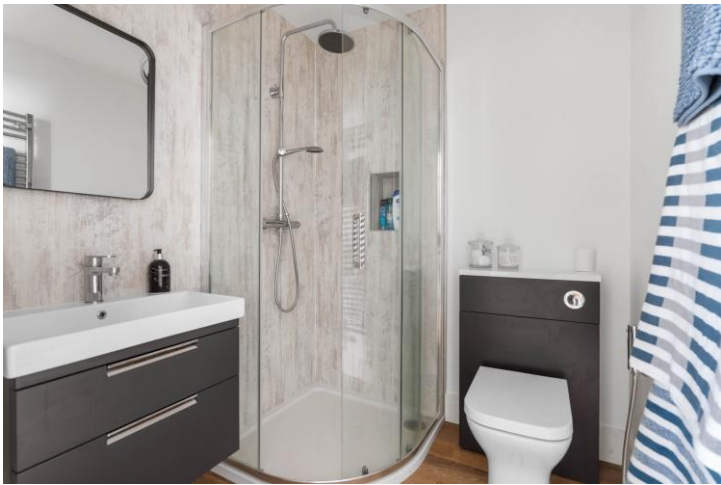
Bedroom One

5.49m (18') x 3.44m (11'3")





En-suite Shower Room
1.97m (6'5") max x 1.72m (5'8")



Bedroom Two/Second Lounge
3.93m (12'11") x 3.32m (10'11")



Bedroom Three
3.10m (10'2") x 2.87m (9'5")



Shower Room
2.75m (9') x 1.40m (4'7")



Landscaped Sunny Aspect Rear Garden



Plot



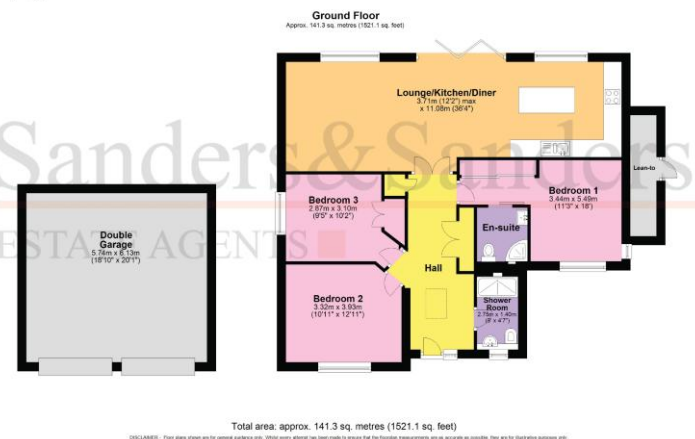
Double Garage
6.13m (20'1") x 5.74m (18'10")

Permitted Development Proposed Plans

<https://sales.sanders-sanders.co.uk/Certificate-Lawful-Development-Proposed>

Plans & Property Details Disclaimer

These plans are for identification purposes only in relation to where one room is situated to another. They are not to be relied upon in any way for dimensions, scaling or sq. ft/metres. We will not be held responsible for any loss incurred, due to reliance on these measurements from the floor plans or measurements from the property details. You are advised to confirm all measurements.



Fixtures & Fittings

Please note that the fixtures & fittings shown on the photographs, contained within these property details, do not form part of a fixtures & fittings list. Some items may/may not be included. You are advised to clarify what items are included before entering into any negotiations.