

## PRIORS GRANGE SALFORD PRIORS WORCESTERSHIRE



A beautifully presented, much improved and generously proportioned, detached family home, boasting a splendid and sizeable garden to rear with open aspect views. The accommodation comprises: Two reception rooms, large conservatory, breakfast kitchen, utility room, downstairs cloakroom, four bedrooms, en-suite shower room and bathroom. Driveway parking for several cars, double garage and garden office/summerhouse. The property enjoys a cul-de-sac location and is situated a short stroll away from a delightful park and village stores.

**£520,000**

Burton House, High Street, Alcester, Warwickshire, B49 5AB.  
Tel: 01789 766771 E-mail: [alcester@sanders-sanders.co.uk](mailto:alcester@sanders-sanders.co.uk)

Web: [www.sanders-sanders.co.uk](http://www.sanders-sanders.co.uk)

# Priors Grange, Salford Priors, Evesham, Worcestershire, WR11 8XP

**Hallway**



**Rear Conservatory**

12'6" x 9'7" (3.80 x 2.93)



**Lounge**

18'4" x 13'3" (5.58 x 4.03)



**Breakfast Kitchen**

11'2" x 9'11" (3.41 x 3.03)



**Dining Room**

13'3" x 11'3" (4.04 x 3.42)



**Utility Room**

2.86 x 1.97

**Downstairs Cloakroom**



**Bedroom One**  
13'1" x 12'3" (4.00 x 3.73)



**Bedroom Three**  
11'2" x 9'6" (3.41 x 2.90)



**En-Suite Shower Room**



**Bedroom Four**  
11'3" x 7'6" (3.43 x 2.29)



**Bedroom Two**  
13'0" x 10'4" (3.95 x 3.16)



**Bathroom**



## Rear Garden



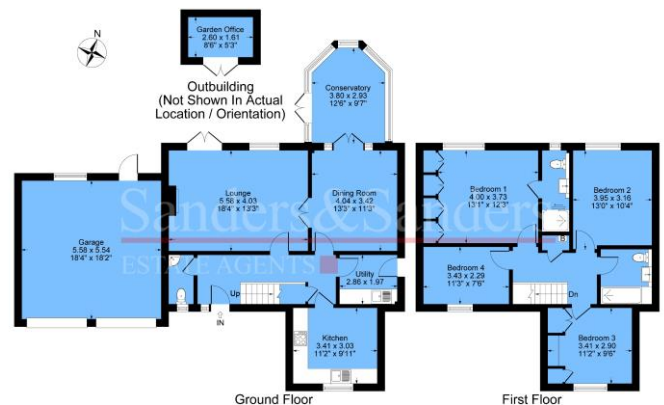
**Double Garage**  
**18'4" x 18'2" (5.58 x 5.54)**

**Nearby Park**



## Floor Plans & Property Details Disclaimer

These floor plans are for identification purposes only in relation to where one room is situated to another. They are not to be relied upon in any way for dimensions, scaling or sq. ft/metres. We will not be held responsible for any loss incurred, due to reliance on these measurements from the floor plans or measurements.



Approximate Gross Internal Area = 180.0 sq m / 1938 sq ft  
 Illustration for identification purposes only.  
 measurements are approximate, not to scale.