

Sanders & Sanders

ESTATE AGENTS

EVESHAM STREET ALCESTER WARWICKSHIRE



An opportunity to acquire a double fronted, period cottage, boasting its own rear parking space and being offered with no upward chain.

Benefiting from a sunny aspect rear garden with outhouse and having accommodation to include; Entrance lobby, lounge, separate dining room, breakfast kitchen with inglenook style fireplace, cellar, galled landing, three bedrooms and bathroom. The grade II listed accommodation is centrally heated, in need of modernisation and has character features such as flagstone flooring, ornate staircase, exposed wall and ceiling timbers.

£225,000

Burton House, High Street, Alcester, Warwickshire, B49 5AB.
Tel: 01789 766771 E-mail: alcester@sanders-sanders.co.uk

Web: www.sanders-sanders.co.uk

Evesham Street, Alcester, Warwickshire, B49 5DN

Lounge
14'2" x 8'5" (4.32 x 2.56)



Cellar
13'7" x 8'2" (4.15 x 2.48)



Dining Room
14'1" x 10'5" (4.30 x 3.17)



Bedroom One
14'1" x 11'3" (4.29 x 3.43)



Breakfast Kitchen
12'9" x 11'9" (3.77 x 3.58)



Bedroom Two
13'9" x 9'3" (4.18 x 2.82)



Bedroom Three
10'6" x 9'4" (3.21 x 2.85)



Bathroom



Rear Garden



Outbuilding

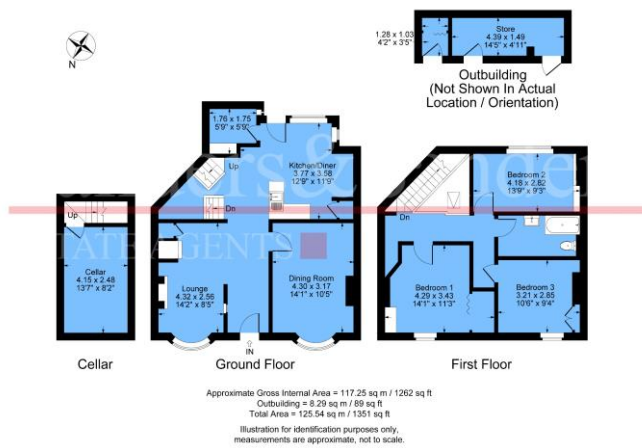


Parking

There is one allocated parking space located a short distance away to the rear of the property.

Floor Plans & Property Details Disclaimer

These floor plans are for identification purposes only in relation to where one room is situated to another. They are not to be relied upon in any way for dimensions, scaling or sq. ft/metres. We will not be held responsible for any loss incurred, due to reliance on these measurements from the floor plans or measurements from the property details. You are advised to confirm all measurements.



Fixtures & Fittings

Please note that the fixtures & fittings shown on the photographs, contained within these property details, do not form part of a fixtures & fittings list. Some items may/may not be included. You are advised to clarify what items are included before entering into any negotiations.