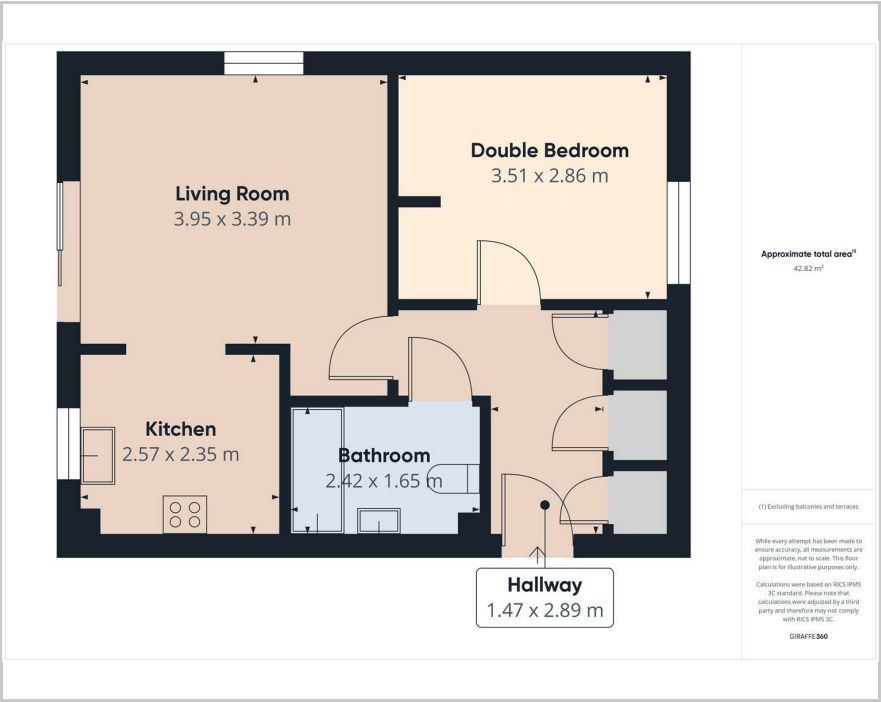




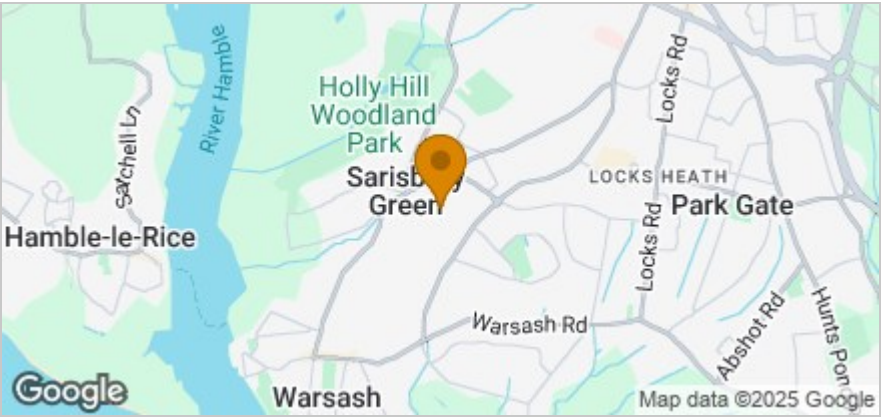
Sable Close, Locks Heath, Southampton
Guide Price £190,000



Floor Plan



Area Map



These particulars, whilst believed to be accurate are set out as a general outline only for guidance and do not constitute any part of an offer or contract. Intending purchasers should not rely on them as statements of representation of fact, but must satisfy themselves by inspection or otherwise as to their accuracy. No person in this firm's employment has the authority to make or give any representation or warranty in respect of the property.

32 Bridge Road, Park Gate, Southampton, Hampshire, SO31 7GF
Tel: 01489 584298 Email: hello@chimneypotsestateagents.co.uk <https://www.chimneypotsestateagents.co.uk>

Step into contemporary luxury with this stunning property, perfectly designed for modern living. The spacious open-plan kitchen and sitting room offer the ideal space for both relaxation and entertainment, with a sleek modern kitchen seamlessly blending into a bright and airy sitting room that leads out to a private balcony – the perfect spot to enjoy a cup of tea in the morning or unwind with a glass of wine in the evening.

The generously-sized bedroom provides a peaceful haven. The bathroom provides a stylish design, complete with high-quality fixtures and fittings.

Located in a convenient spot, this property comes with the added bonus of one allocated parking space and easy access to local amenities. Whether you're a first-time buyer, a busy professional, or someone looking to downsize in style, this apartment offers a fantastic opportunity to live comfortably and elegantly.

