

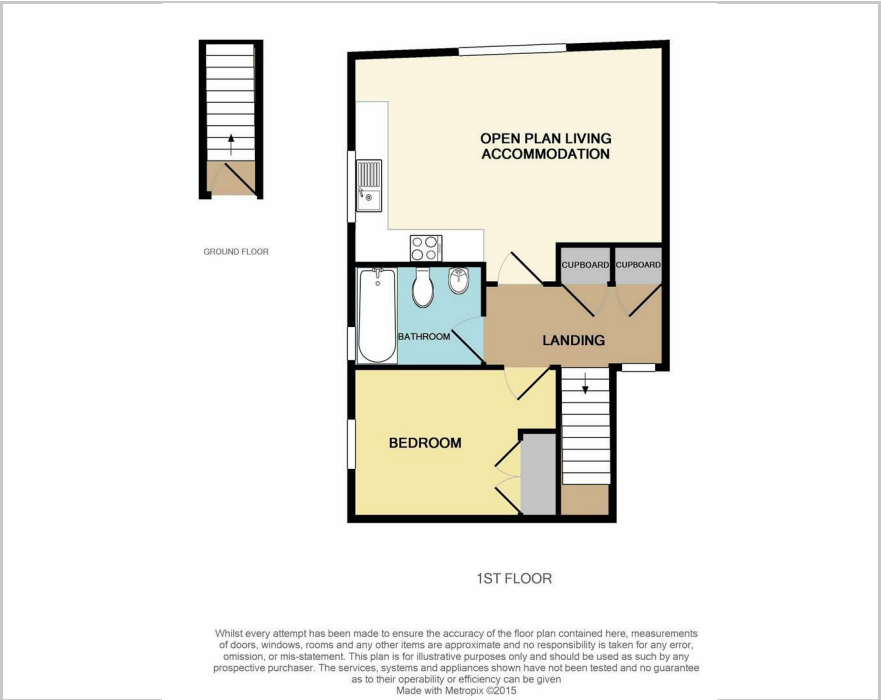


Bedford Drive, Titchfield Common, PO14 4FH  
Guide Price £160,000

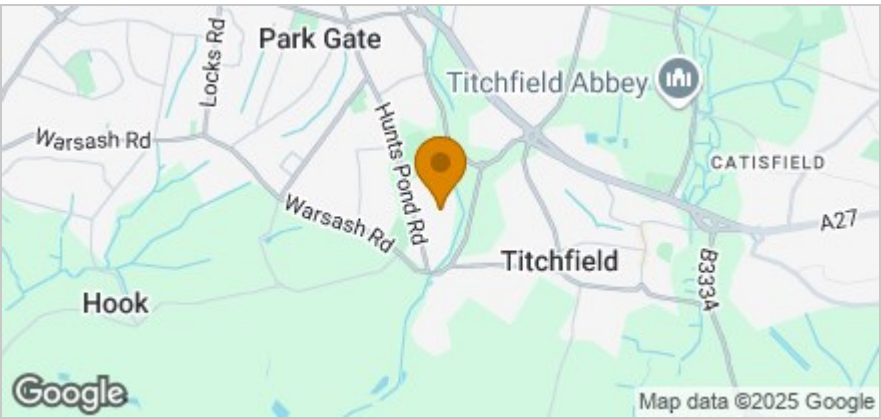




Floor Plan



Area Map



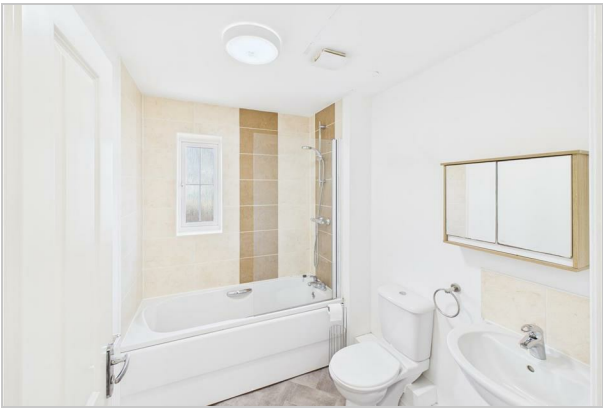
These particulars, whilst believed to be accurate are set out as a general outline only for guidance and do not constitute any part of an offer or contract. Intending purchasers should not rely on them as statements of representation of fact, but must satisfy themselves by inspection or otherwise as to their accuracy. No person in this firm's employment has the authority to make or give any representation or warranty in respect of the property.

32 Bridge Road, Park Gate, Southampton, Hampshire, SO31 7GF  
Tel: 01489 584298 Email: [hello@chimney pots estate agents.co.uk](mailto:hello@chimney pots estate agents.co.uk) <https://www.chimney pots estate agents.co.uk>

Situated in the sought-after location of Titchfield Common is this first floor maisonette offering bright and spacious accommodation which in brief comprises open plan living accommodation, perfect for entertaining guests or relaxing after a long day. The kitchen area is fitted with a range of cupboards allowing plentiful storage. With one generous bedroom, a modern bathroom, spacious storage, and allocated parking for two cars, this home offers convenience and comfort.

Situated in Titchfield Common, you will find yourself just a short distance away from the local shops and amenities of Titchfield and Locks Heath. Enjoy a leisurely stroll to the nearby pub or take advantage of easy access to transport links including the A27 and M27 for stress-free commutes.

Whether you are a first-time buyer looking for a cozy home to call your own or an investor seeking a promising property in a popular location, this well-maintained maisonette ticks all the boxes.



Viewing

Please contact our Chimney Pots Estate Agents Office on 01489 584298 if you wish to arrange a viewing appointment for this property or require further information.

