



Asking Price £200,000
Wentworth Gardens, Southampton



2

Bedrooms



1

Bathroom



1

Receptions



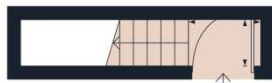
- A beautifully presented top floor maisonette
- Offering bright and spacious accommodation
- Overlooking beautiful woodland from the lounge
- Contemporary kitchen
- Two double bedrooms and shower room
- Garage and area of private garden
- No service charge
- No forward chain

Nestled in a serene setting adjacent to enchanting woodland, this charming top floor maisonette presents a rare opportunity to reside in a peaceful setting with picturesque woodland views. Ideally positioned for those seeking tranquillity, the property is set within a quiet enclave, yet remains within easy reach of local amenities and transport links.

The spacious interior boasts a generous lounge and dining area with ample natural light, perfect for relaxing or entertaining guests. There are two well-proportioned double bedrooms, each thoughtfully designed to maximise comfort. The beautifully appointed modern fitted kitchen features sleek cabinetry and quality integrated appliances, while the contemporary shower room is finished to a high standard, providing both style and practicality.

Additional benefits include a private garage and an area of garden, offering valuable outdoor space for enjoying the fresh air or cultivating plants. The property is offered with no forward chain, making for a swift and uncomplicated transition for new owners.

Perfectly suited to those wishing to downsize, first-time buyers, or anyone longing for a turnkey home surrounded by natural beauty. Arrange a viewing today to fully appreciate all that this delightful maisonette has to offer.



Approximate total area⁽¹⁾
59.6 m²
642 ft²

(1) Excluding balconies and terraces

Calculations reference the RICS IPMS 3C standard. Measurements are approximate and not to scale. This floor plan is intended for illustration only.

GIRAFFE360



Tel : 01489 584 298

Email : hello@chimneypotsestateagents.co.uk

Address : 32 Bridge Rd, Park Gate, Southampton SO31 7CF

