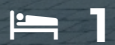




Asking Price £175,000
Knowle Avenue, PO17 5FS



1

Bedroom



1

Bathroom



1

Receptions



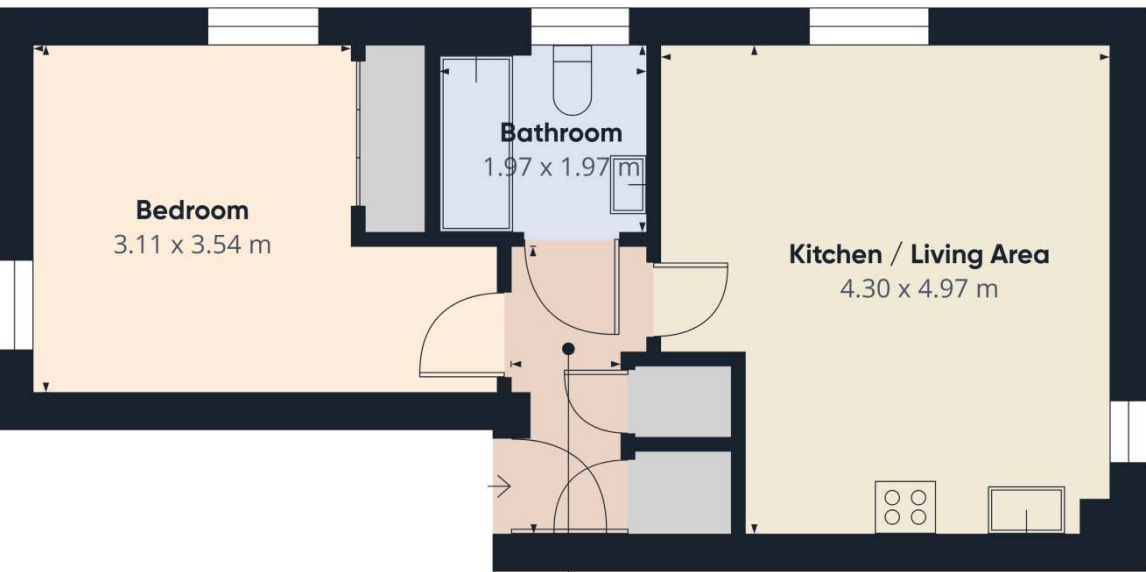
- Ample Fitted Storage
- First Floor Apartment
- Open Plan Kitchen/Sitting Room
- Allocated Parking
- Built In Wardrobes In Bedroom
- Long Lease

We are pleased to present this well-maintained first-floor one-bedroom apartment situated in Knowle Village. The property offers an open-plan lounge and kitchen, creating a bright and functional living space.

The bedroom benefits from built-in mirrored wardrobes and is accompanied by a modern three-piece bathroom.

The property also includes an allocated parking space, with ample visitor parking available nearby.

Nearby, you'll find a variety of local amenities, including shops, salons, and parks, providing everything you need within easy reach. This apartment presents an excellent opportunity for first-time buyers, professionals, or anyone looking to downsize.

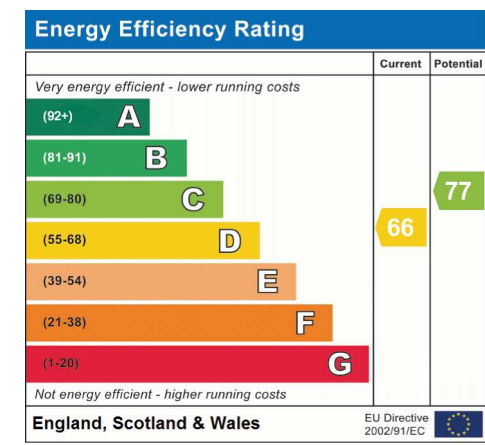


Approximate total area⁽¹⁾
43 m²

(1) Excluding balconies and terraces

Calculations reference the RICS IPMS
3C standard. Measurements are
approximate and not to scale. This
floor plan is intended for illustration
only.

GIRAFFE360



Address: Knowle Avenue, PO17 5FS



Tel : 01489 584 298
Email : hello@chimneypotsestateagents.co.uk
Address : 32 Bridge Rd, Park Gate, Southampton SO31 7CF

