



Asking Price £315,000
Trevose Way, Titchfield Common, PO14



3

Bedrooms



1

Bathroom



1

Receptions



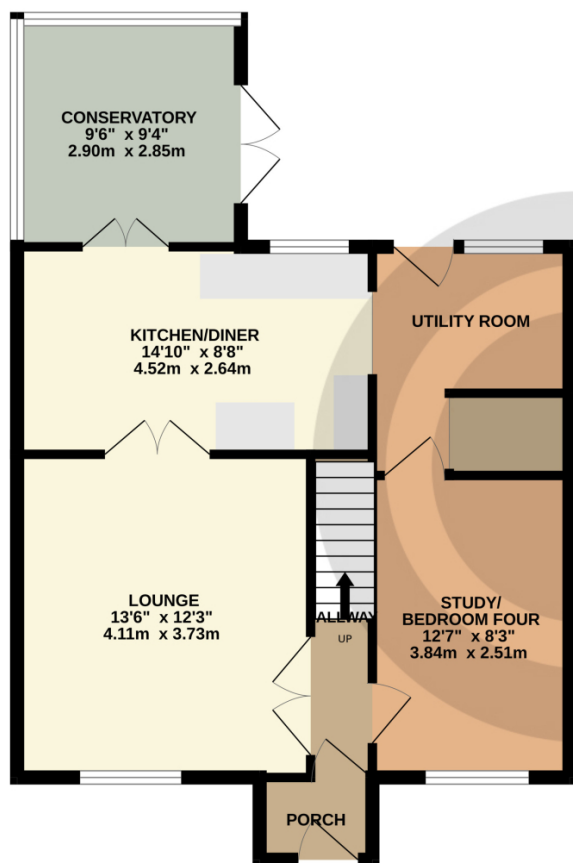
- A semi detached family home
- Nestled away in a pleasant cul de sac
- Spacious kitchen/ diner extending across the rear
- Lounge and further reception room/bedroom four
- Conservatory
- Three bedrooms and modern shower room
- Secluded and sunny garden
- Scope to extend subject to relevant consent

Calling all homebuyers looking for a versatile family home in a peaceful close! This extended semi detached property boasts bright and spacious accommodation, perfect for comfortable living. The ground floor features a welcoming lounge at the front, a kitchen/diner spanning the rear of the house with a separate utility room, a convenient conservatory, and a bonus playroom or fourth bedroom. Upstairs, you'll find three bedrooms and a modern shower room.

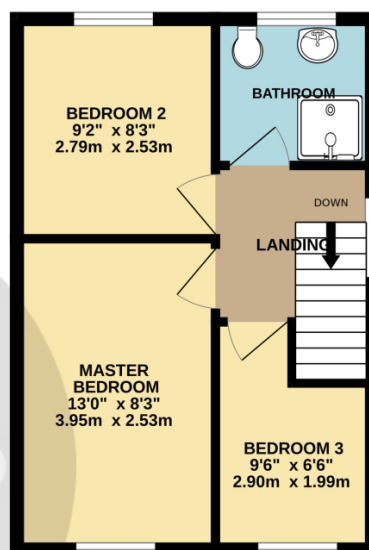
While the property could benefit from some updating, the potential to extend (subject to planning permission) offers a fantastic opportunity for personalising the space to suit your needs. Outside, a sunny and secluded rear garden provides a peaceful retreat, and a private drive at the front ensures easy access. Located within walking distance of local schools and shops, you'll find everything you need within reach.

Don't miss out on this fantastic opportunity to make this house your own! Offered for sale with no forward chain, book your viewing today and start envisioning your future in this lovely home.

GROUND FLOOR



1ST FLOOR



Whilst every attempt has been made to ensure the accuracy of the floorplan contained here, measurements of doors, windows, rooms and any other items are approximate and no responsibility is taken for any error, omission or mis-statement. This plan is for illustrative purposes only and should be used as such by any prospective purchaser. The services, systems and appliances shown have not been tested and no guarantee as to their operability or efficiency can be given.
Made with Metropix ©2025

Tel : 01489 584 298

Email : hello@chimneypotsestateagents.co.uk

Address : 32 Bridge Rd, Park Gate, Southampton SO31 7CF

