

A circular logo with a dark background. The text 'Chimneypots' is written in a large, white, serif font. Below it, 'ESTATE AGENTS' is written in a smaller, white, sans-serif font. At the bottom, 'YOUR HOME • OUR PASSION' is written in a white, sans-serif font, following the curve of the circle.

Chimneypots

ESTATE AGENTS

YOUR HOME • OUR PASSION

A two-story house with a mix of brick and dark brown horizontal siding. The ground floor is primarily brick, while the upper floor and dormers are dark brown. There are several white-framed windows, including a large bay window on the ground floor and multiple dormer windows on the upper floor. A satellite dish is mounted on the side of the house. The house is partially obscured by a large, dense bush with reddish-brown flowers in the foreground. A paved road is visible at the bottom of the image.

Monarch Way West End, Southampton, SO30 3JQ  
Guide Price £325,000



- Three bedroom semi-detached family home
- Generous corner plot with a sunny garden
- Spacious lounge flooded with natural light
- Separate dining room and conservatory
- Kitchen is to the rear with ample space for appliances
  - Modern shower room
- Large garage with parking in front
  - Highly sought after location
  - VENDOR SUITED

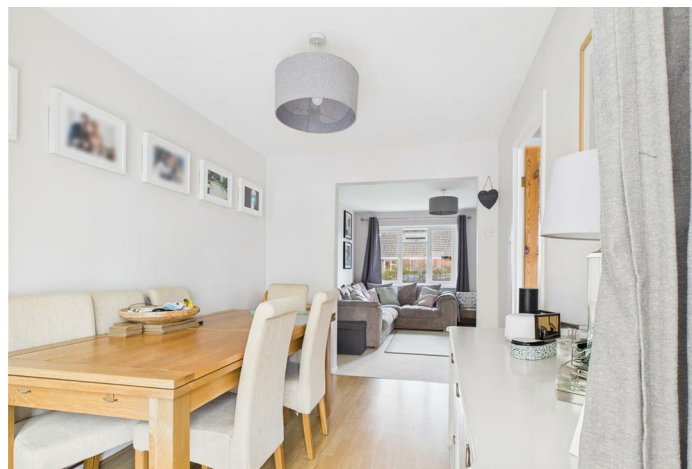
Nestled in a highly sought-after location, this beautifully presented three-bedroom semi-detached home offers an ideal setting for family living. Positioned on a generous corner plot, the property boasts a sunny, well-maintained garden perfect for outdoor enjoyment.

Inside, the spacious lounge is flooded with natural light, creating a warm and inviting atmosphere. A separate dining room and conservatory provide excellent entertaining space, while the well-appointed kitchen at the rear offers ample room for appliances and daily functionality.

Upstairs, you'll find three good-sized bedrooms and a modern shower room. Additional features include a large garage with parking in front, ensuring convenience and secure storage.

Located close to local schools, shops, and amenities, this home is perfect for families seeking both comfort and convenience. Vendor suited – ready to move!

Council Tax Band: C



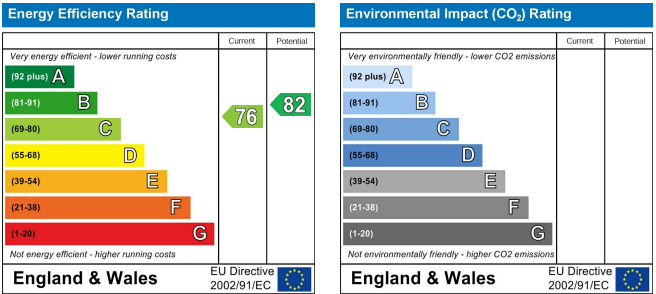
Floor Plans



Area Map



Energy Performance Graph



These particulars, whilst believed to be accurate are set out as a general outline only for guidance and do not constitute any part of an offer or contract. Intending purchasers should not rely on them as statements of representation of fact, but must satisfy themselves by inspection or otherwise as to their accuracy. No person in this firms employment has the authority to make or give any representation or warranty in respect of the property.