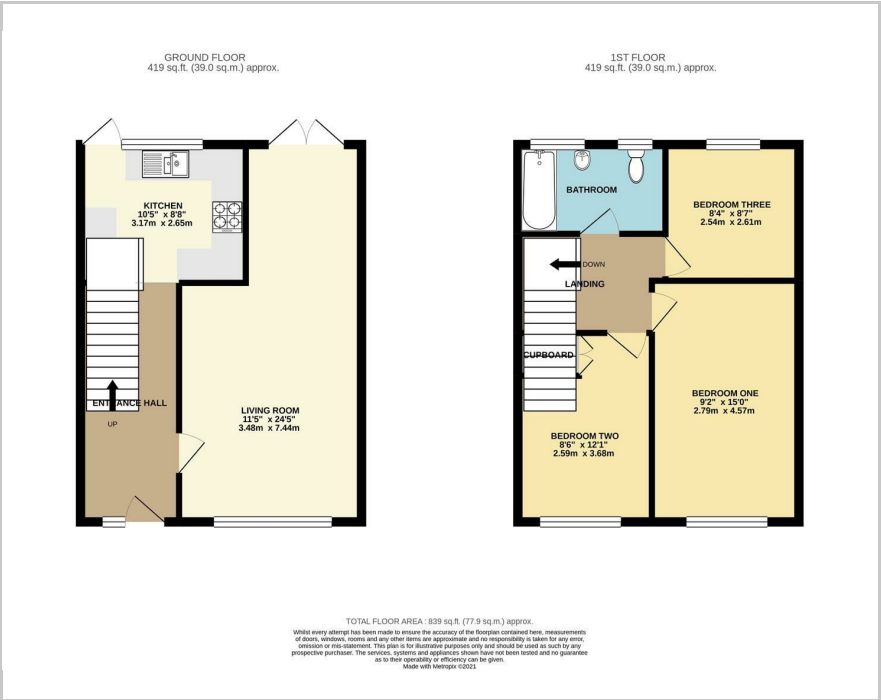




Woodhall Way, Fareham, PO15 6BP
£1,500 Per Calendar Month



Floor Plan



Area Map



These particulars, whilst believed to be accurate are set out as a general outline only for guidance and do not constitute any part of an offer or contract. Intending purchasers should not rely on them as statements of representation of fact, but must satisfy themselves by inspection or otherwise as to their accuracy. No person in this firms employment has the authority to make or give any representation or warranty in respect of the property.

32 Bridge Road, Park Gate, Southampton, Hampshire, SO31 7GF
Tel: 01489 584298 Email: hello@chimneypotsestateagents.co.uk <https://www.chimneypotsestateagents.co.uk>

Situated to the North of Fareham is this terraced home offering bright and spacious well laid out accommodation. The property has a dual aspect 24ft Lounge diner with French doors leading out to the rear garden. The kitchen is fitted with an extensive range of units allowing plentiful storage. Upstairs there are three generous bedrooms and modern family bathroom.

The property is unfurnished and comes with a detached garage. Available now. An early viewing comes highly recommended to avoid disappointment.

