



Brook Avenue, Warsash, Southampton  
Guide Price £1,625,000





- A contemporary residence of excellent proportions extending to 3251 sq ft
  - 35FT Kitchen/dining/living space great for entertaining!
    - Lounge, family room and study
  - Five bedrooms, three en-suites and family bathroom
    - Secluded rear garden
- Gated entrance, triple garage/gym with planning consent to convert to a two bedroom annexe
- Within 500 yards of the Hamble river, families will also love the area, as it's convenient for both state and private schools
  - Offered with no forward chain



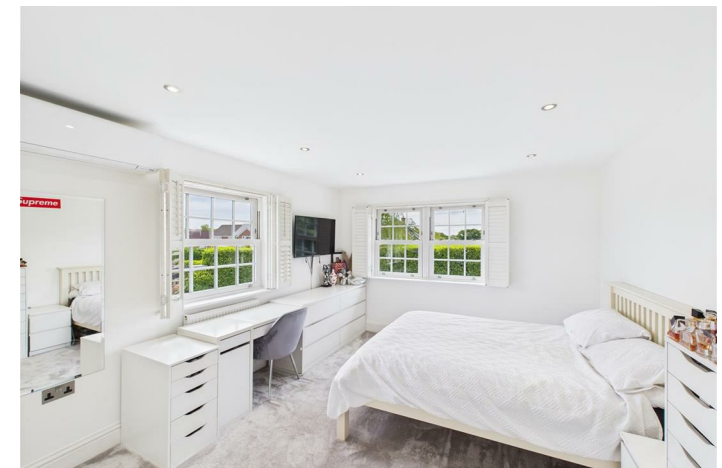
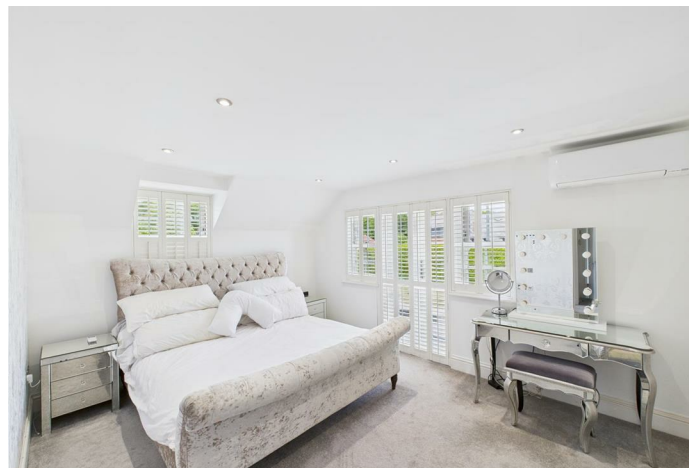
Located in a tranquil and highly sought-after location, this incredible family residence boasts 3,251 square feet of luxurious living space. Lovingly maintained by its current owner, this impressive home offers a sense of grandeur with expansive living spaces spread across two floors.

On the ground floor, you will find a triple aspect lounge flooded with natural light, leading out to the lush outdoors through French double doors. The heart of the home features an open-plan living/dining area with a wood burner, seamlessly connected to a fully fitted modern kitchen complete with integrated appliances, aga, pantry cupboard, central island, and a range of eye and base-level units. An additional family/reception room and separate study offer versatile living spaces.

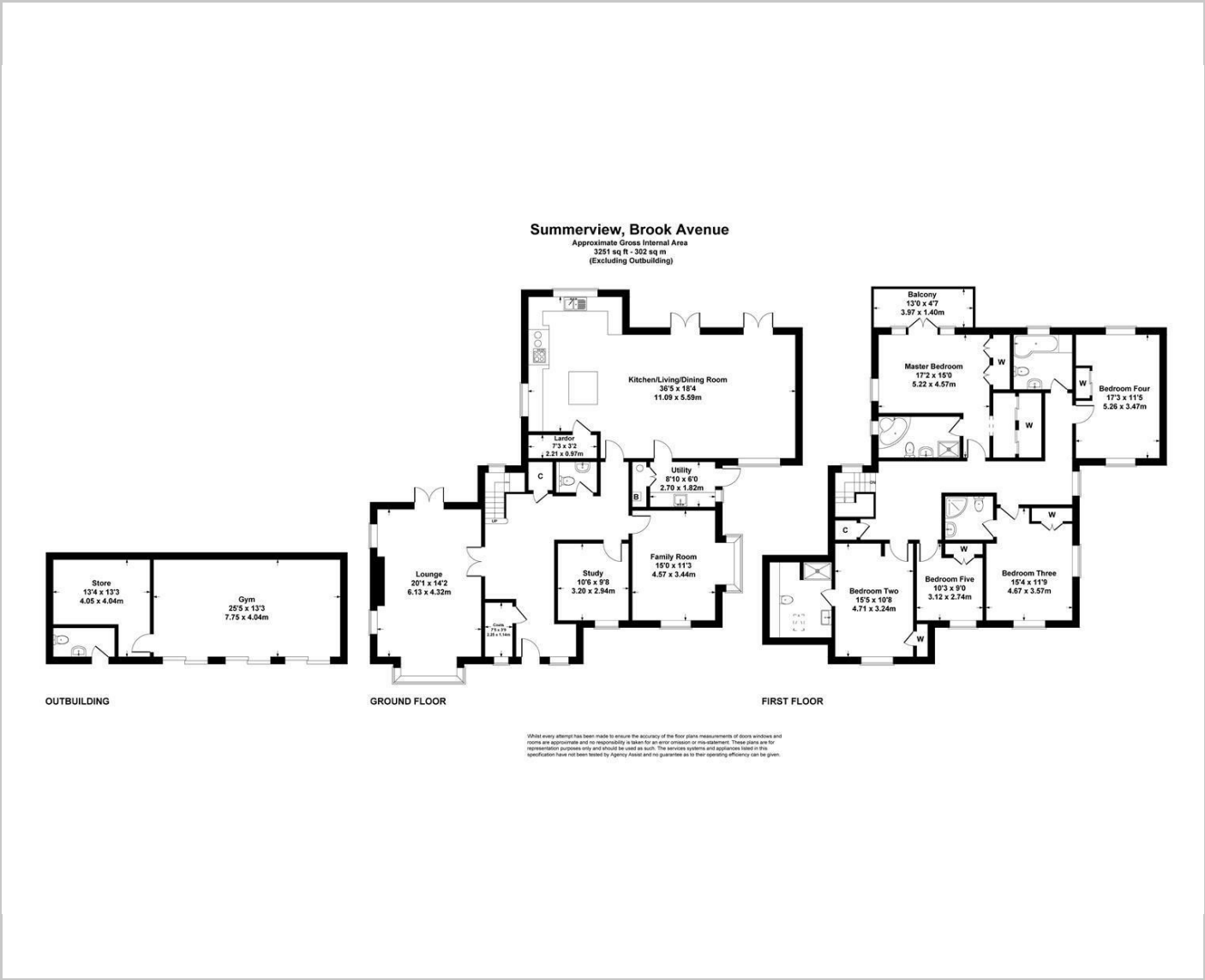
Venturing upstairs, a captivating galleried landing leads to the master bedroom with en-suite and walk-in dressing room, along with four more double bedrooms with fitted wardrobes. Two of these bedrooms feature en-suites, with a family bathroom completing the internal layout.

Set in a secluded position behind electric gates, the property sits centrally within the plot, surrounded by expansive lawns perfect for outdoor gatherings. The terrace provides a wonderful spot for al fresco dining or simply soaking up the sun. A large driveway offers parking for multiple vehicles, with a triple garage that currently serves as a gym and has planning permission to be converted into a two-bedroom annexe.

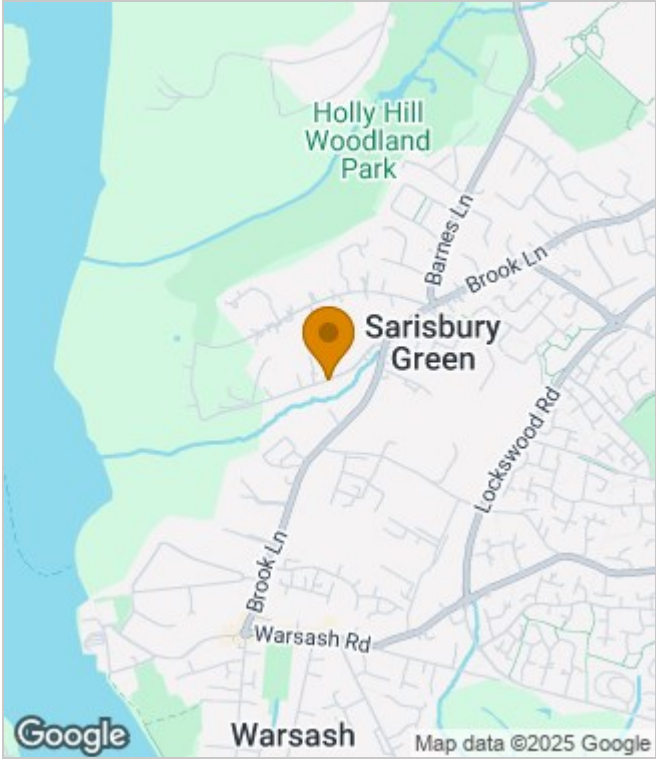
In addition to the stunning features of the property, its privileged location offers easy access to the River Hamble, making it ideal for families and boat enthusiasts alike. The area also provides convenient access to both state and private schools, making it an ideal place to call home.



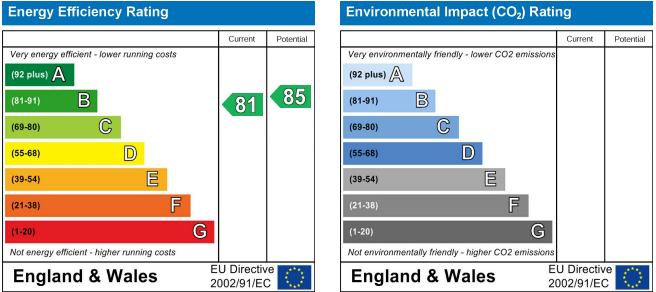
Floor Plans



Area Map



Energy Performance Graph



These particulars, whilst believed to be accurate are set out as a general outline only for guidance and do not constitute any part of an offer or contract. Intending purchasers should not rely on them as statements of representation of fact, but must satisfy themselves by inspection or otherwise as to their accuracy. No person in this firms employment has the authority to make or give any representation or warranty in respect of the property.