

A circular logo with the text "Chimneypots" in a serif font, with "ESTATE AGENTS" in a smaller sans-serif font below it. The tagline "YOUR HOME OUR PASSION" is written in a curved path around the bottom of the circle.

Chimneypots

ESTATE AGENTS

YOUR HOME OUR PASSION

Campion Close, Warsash, Southampton
Asking Price £660,000



- A beautifully presented detached family home offering spacious and versatile accommodation
 - Fabulous L shaped kitchen/dining/family room
 - Lounge with feature box bay window and fireplace
 - Five bedrooms, two en-suites and family bathroom
 - Bedroom six/playroom and wet room, previously utilised as an annexe
 - Garage and driveway parking for three vehicles
 - Secluded enclosed rear garden
- Central village location, within walking distance of the local schools and shops

Located in a sought-after area, this stunning property has been meticulously maintained and improved by its current owners. As you step into the inviting hallway, you are greeted with a spacious lounge showcasing a feature box bay window and a cozy seating area/study overlooking the front aspect. The heart of the home lies in the fabulous L shaped kitchen/dining/family room at the rear, boasting an extensive range of modern units.

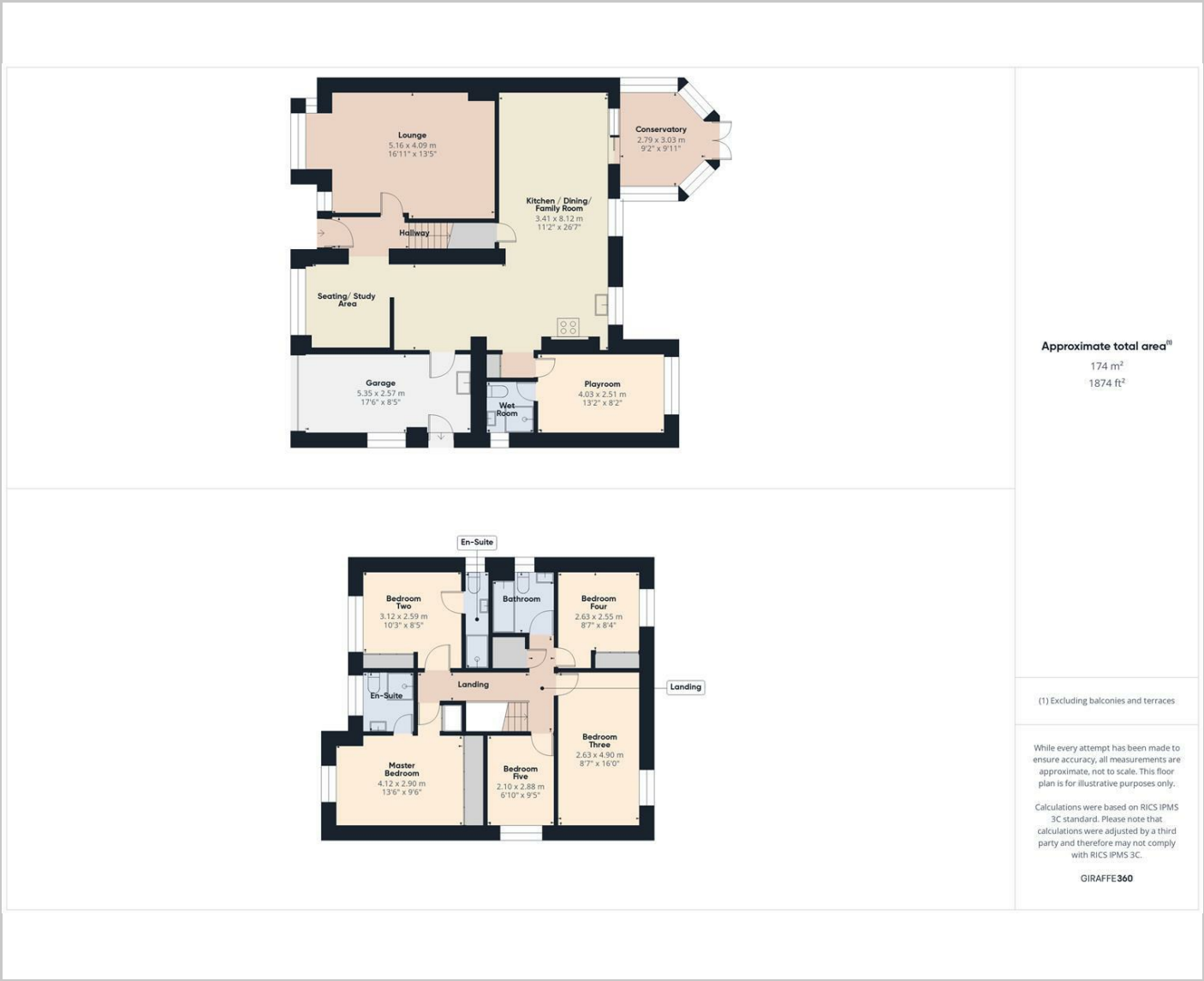
The ground floor also offers a sunroom providing serene views of the sunny private rear garden, as well as a versatile playroom and convenient wet room – previously used as an annexe. Upstairs, the property features five generously-sized bedrooms, four of which are doubles. The master bedroom and guest bedroom both benefit from en-suite shower rooms, with the remaining bedrooms being serviced by a family bathroom.

Outside, a single garage and ample driveway parking for multiple cars ensure convenience for you and your guests. The beautifully presented interior, coupled with the flexibility of the accommodation, makes this an ideal residence for a growing family. The property is situated within the catchment area of excellent schools, and residents can enjoy leisurely walks along the picturesque shoreline nearby.

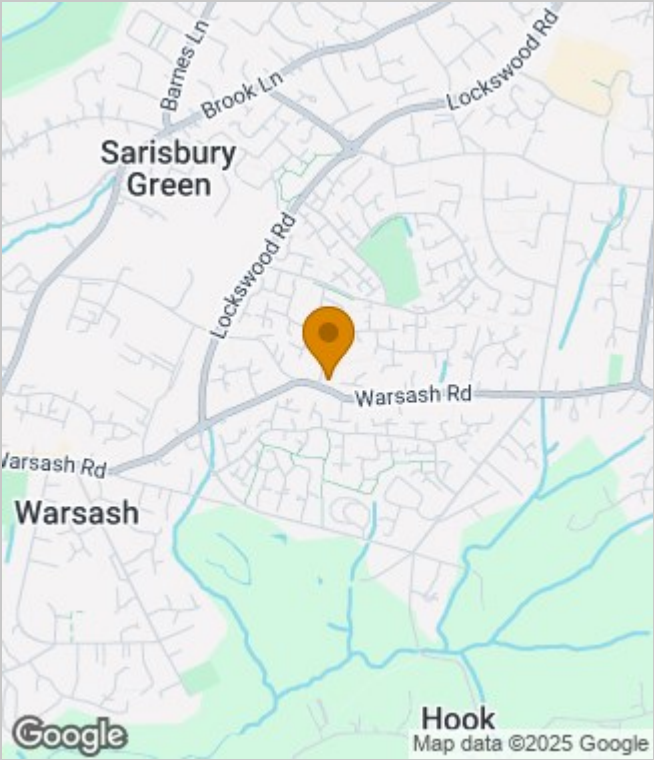
Don't miss the opportunity to view this remarkable family home – arrange a viewing today to truly appreciate the space and charm it has to offer.



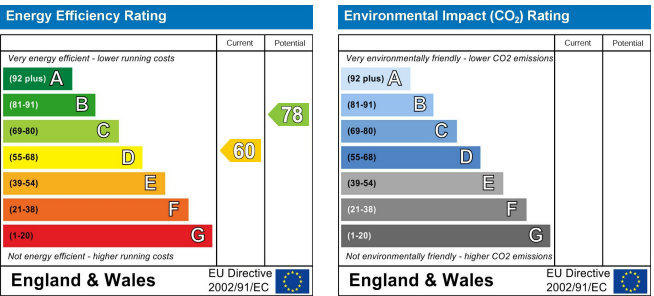
Floor Plans



Area Map



Energy Performance Graph



These particulars, whilst believed to be accurate are set out as a general outline only for guidance and do not constitute any part of an offer or contract. Intending purchasers should not rely on them as statements of representation of fact, but must satisfy themselves by inspection or otherwise as to their accuracy. No person in this firms employment has the authority to make or give any representation or warranty in respect of the property.