



Titchfield Grange, Titchfield Park
Asking Price £180,000

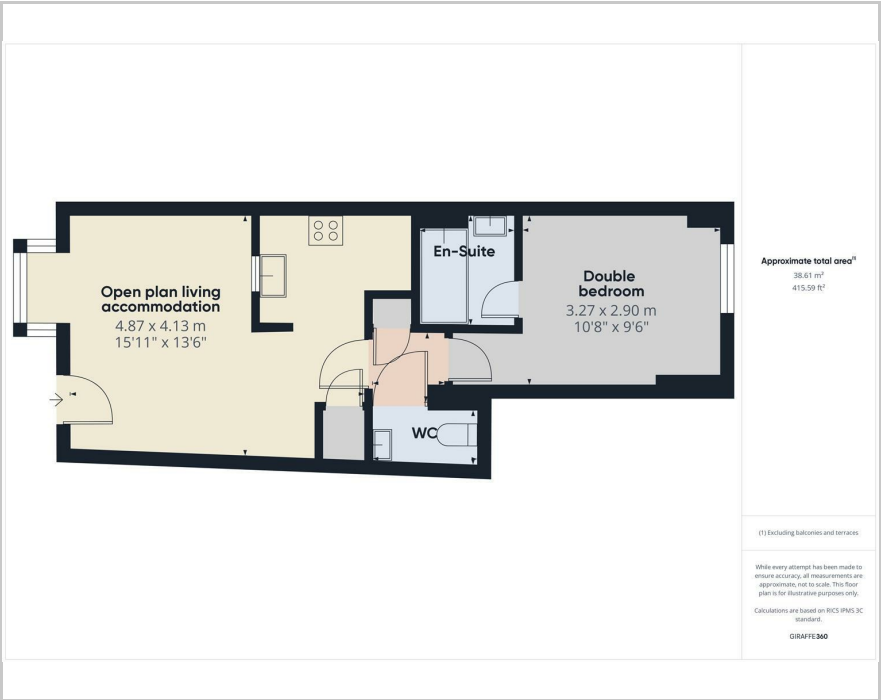
 1

 1

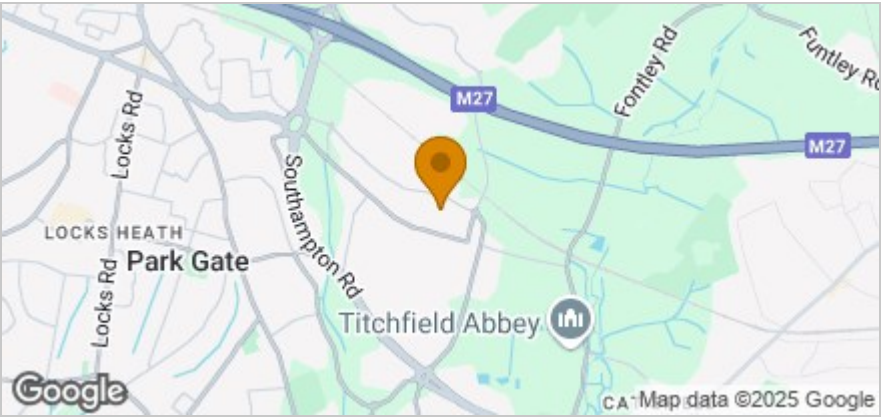
 1

 C

Floor Plan



Area Map



These particulars, whilst believed to be accurate are set out as a general outline only for guidance and do not constitute any part of an offer or contract. Intending purchasers should not rely on them as statements of representation of fact, but must satisfy themselves by inspection or otherwise as to their accuracy. No person in this firms employment has the authority to make or give any representation or warranty in respect of the property.

32 Bridge Road, Park Gate, Southampton, Hampshire, SO31 7GF
Tel: 01489 584298 Email: hello@chimneypotsestateagents.co.uk <https://www.chimneypotsestateagents.co.uk>

A rare find on the market, this immaculately presented ground floor maisonette has undergone recent renovations, showcasing a modern touch throughout. The property offers a generously sized double bedroom, a cosy lounge/dining room, a sleek kitchen, a convenient cloakroom, and a newly renovated en-suite bathroom - perfect for indulging in some self-care. A further benefit are the newly fitted economical wall heaters.

Nestled in the peaceful surroundings of Titchfield Grange, this charming cul de sac provides a tranquil retreat between bustling Fareham and Park Gate. With easy access to major transport links such as the A27 and M27, as well as convenient bus routes, commuting couldn't be easier.

After a long day, unwind in the communal gardens, or take advantage of the allocated parking space conveniently located in front of the property. For those looking to indulge in some retail therapy or enjoy a tasty meal, Whiteley Shopping Centre is just a short drive away, offering a diverse range of shops, eateries, and amenities.

