



Woodhall Way, Fareham, PO15 6BP
Asking Price Asking Price £290,000

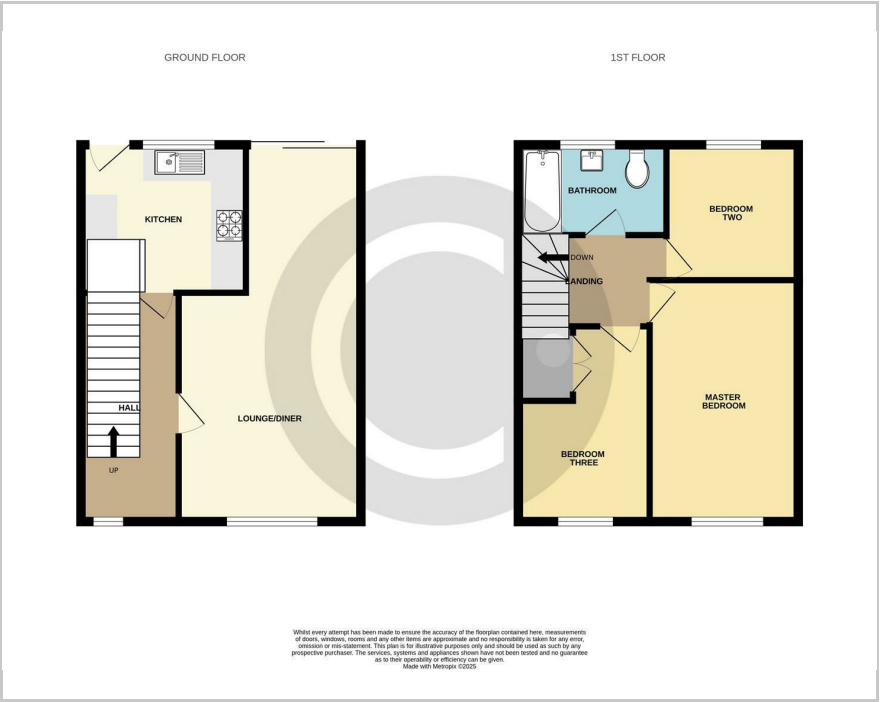
 3

 1

 1

 C

Floor Plan



Area Map



These particulars, whilst believed to be accurate are set out as a general outline only for guidance and do not constitute any part of an offer or contract. Intending purchasers should not rely on them as statements of representation of fact, but must satisfy themselves by inspection or otherwise as to their accuracy. No person in this firms employment has the authority to make or give any representation or warranty in respect of the property.

32 Bridge Road, Park Gate, Southampton, Hampshire, SO31 7GF
Tel: 01489 584298 Email: hello@chimnevpotsestateagents.co.uk <https://www.chimnevpotsestateagents.co.uk>

Introducing a charming three bedroom terraced home located in the sought-after Highland’s area towards the north of Fareham, within the Orchard Lea catchment.

This well-presented property features an inviting entrance hallway, a spacious lounge/dining room, a modern kitchen, three generously sized bedrooms, and a family bathroom. With the added convenience of gas central heating, garage at the rear, and well maintained front and rear gardens, this house is perfect for a growing family.

Situated in a prime location, this home benefits from being in great school catchments and is just a leisurely stroll away from local amenities. Residents can enjoy the peaceful surroundings of the Highlands area, while also having easy access to nearby shops, restaurants, and recreational facilities.

