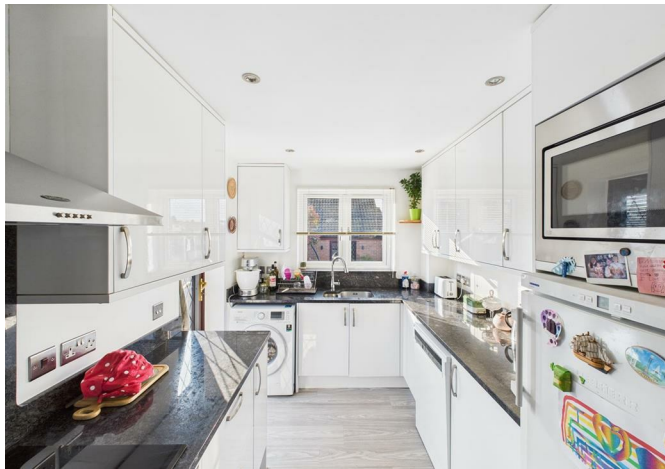




St Simon Close, Locks Heath
Asking Price £425,000



- A detached family home offering bright and spacious well laid out accommodation
 - Open plan kitchen/dining/family room
 - Study/Play room
- Three double bedrooms, en-suite and family bathroom
 - West facing sunny and secluded garden
 - Garage and off road parking for multiple vehicles
- Within walking distance of shops, schools and St Johns Park
 - Internal viewing highly recommended

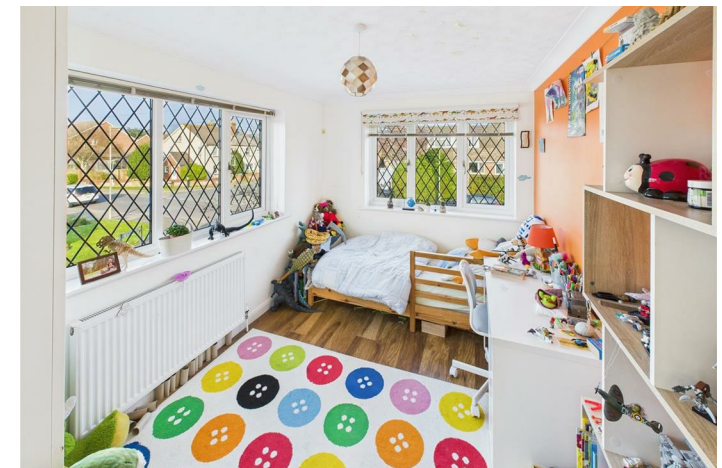
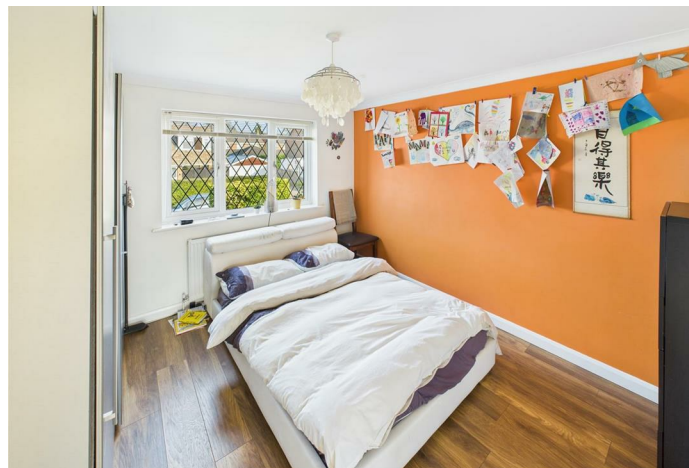
A detached family home awaits in a sought after location, just a leisurely stroll away from Locks Heath Centre, St John's Park, and highly regarded schools. This beautifully enhanced property offers a spacious layout with a delightful open plan living space, complimented by a separate study/playroom on the ground floor and a large under stairs storage cupboard.

Upstairs, the master bedroom has an en-suite shower room, with two additional double bedrooms and a family bathroom completing the interior. Outside, the enclosed garden benefits a westerly aspect and presents both paved and stoned areas, along with artificial grass for the ease of maintenance.

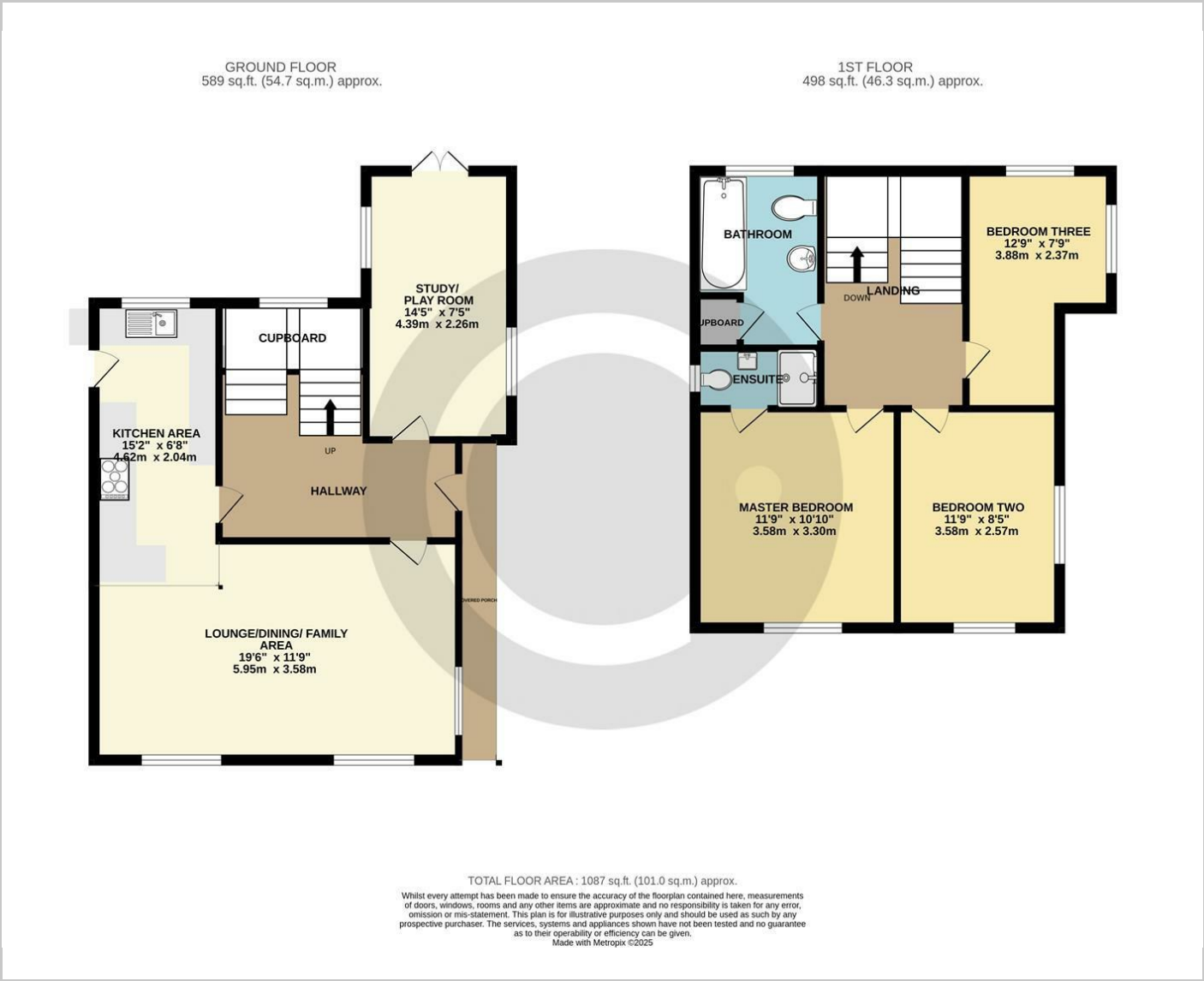
For your convenience, there is a garage included, along with off-road parking suitable for three vehicles.

Don't miss the opportunity to view this exceptional property and make it your own. Enjoy the vibrant community and numerous amenities just a stone's throw away.

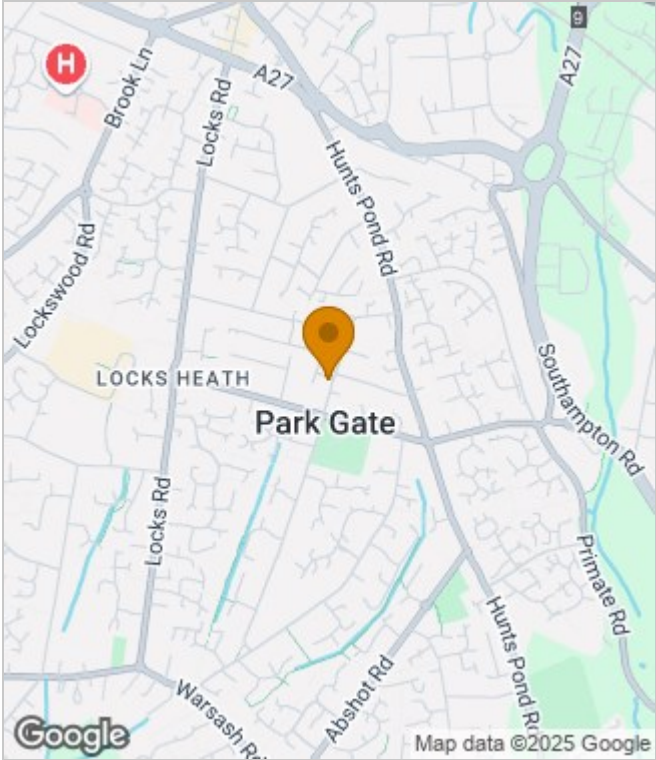
Fareham Council Tax Band: D



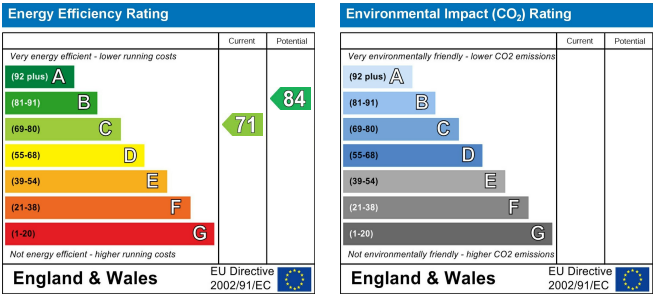
Floor Plans



Area Map



Energy Performance Graph



These particulars, whilst believed to be accurate are set out as a general outline only for guidance and do not constitute any part of an offer or contract. Intending purchasers should not rely on them as statements of representation of fact, but must satisfy themselves by inspection or otherwise as to their accuracy. No person in this firms employment has the authority to make or give any representation or warranty in respect of the property.