


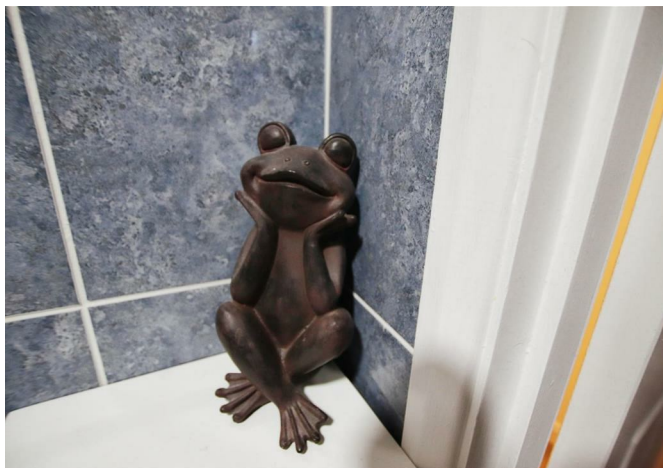


Chimney Pots
ESTATE AGENTS

YOUR HOME • OUR PASSION



Cherry Tree Court, Havelock Road, Warsash
Asking Price £165,000



- A beautifully presented apartment set on the 1st floor
 - Lounge/diner with feature fireplace
 - Modern fitted kitchen
- One double bedroom and modern bathroom
 - Ample off road parking
 - Well maintained communal gardens
 - Within walking distance of the village
 - For residence over 55 years of age

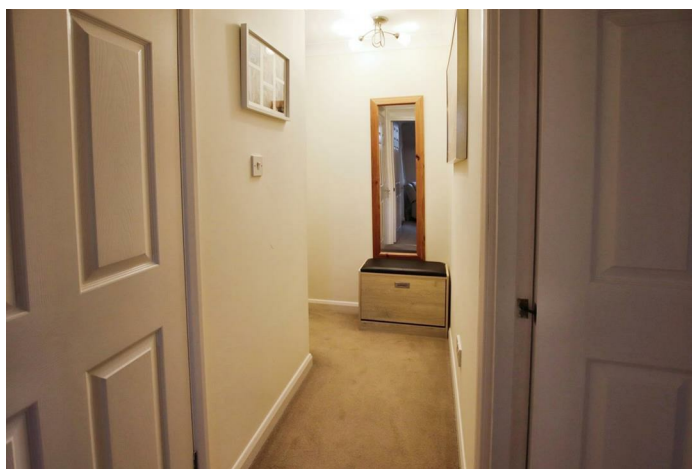
This charming one-bedroom apartment is situated on the first floor of an exclusive residential block designed for those aged 55 and over. Located in Cherry Tree Court, just a short walk from the sought-after Warsash Village, this home also offers easy access to the shore and its scenic surroundings. With both lift and stair access, the apartment provides a comfortable and secure living environment.

Upon entering, you are welcomed by a reception hall that leads to the main living areas, including a bright and spacious lounge, a well-appointed kitchen, a generously sized bedroom, and a modern bathroom. The apartment boasts a light and airy atmosphere, complemented by efficient electric heating.

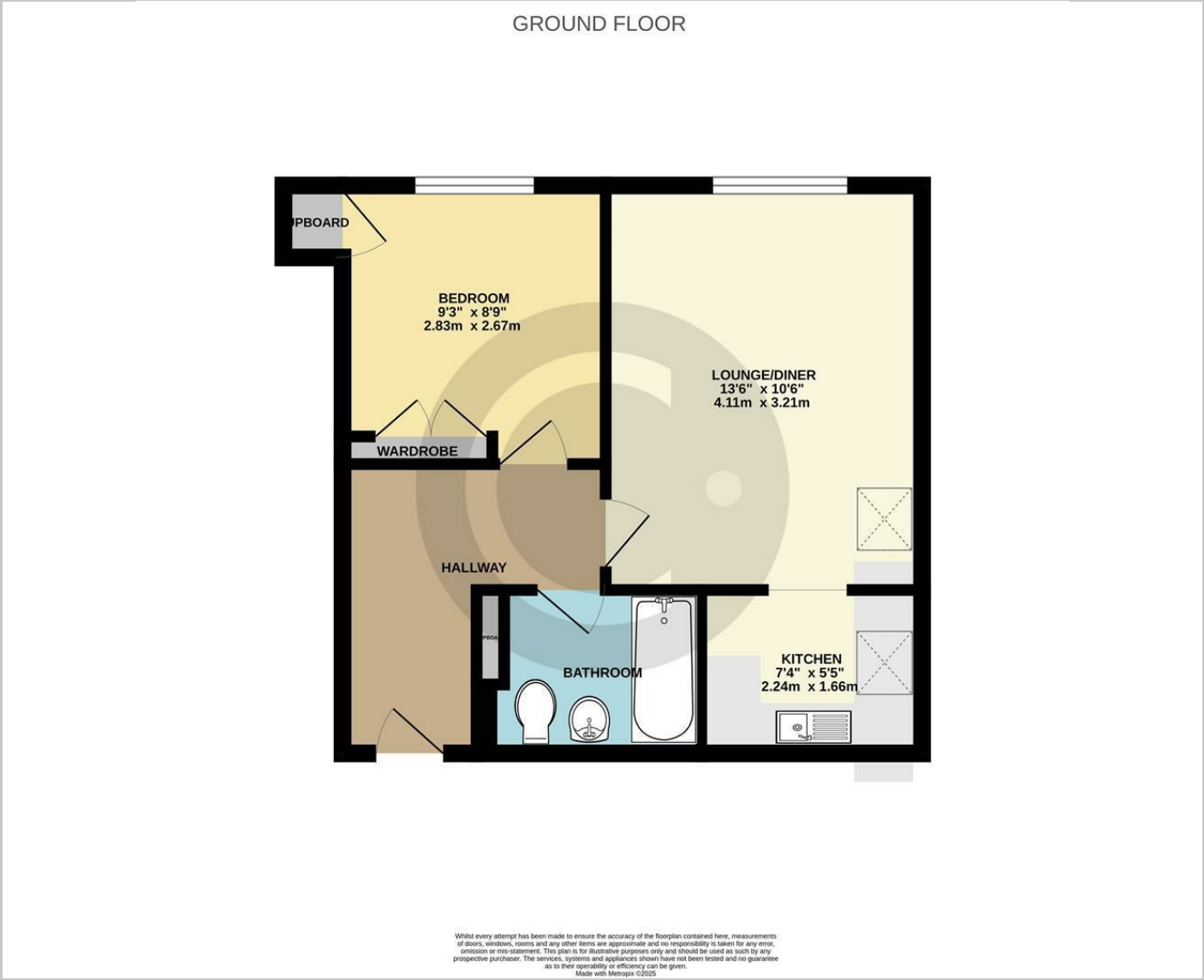
To the rear of the property, there is an ample parking available. Residents can also enjoy the beautifully maintained communal gardens.

Set in Warsash village, this home benefits from a stunning coastal setting at the meeting point of the River Hamble and the Solent. The village offers a range of local amenities, scenic walking routes, and a selection of pubs and restaurants. Nearby Locks Heath provides further shopping options. Excellent transport links are available, with nearby bus routes and easy access to the M27.

Council Tax Band: B



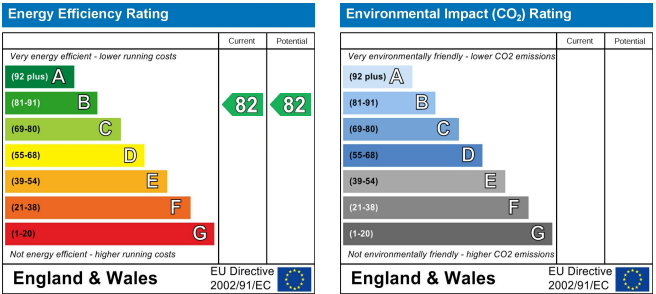
Floor Plans



Area Map



Energy Performance Graph



These particulars, whilst believed to be accurate are set out as a general outline only for guidance and do not constitute any part of an offer or contract. Intending purchasers should not rely on them as statements of representation of fact, but must satisfy themselves by inspection or otherwise as to their accuracy. No person in this firms employment has the authority to make or give any representation or warranty in respect of the property.