

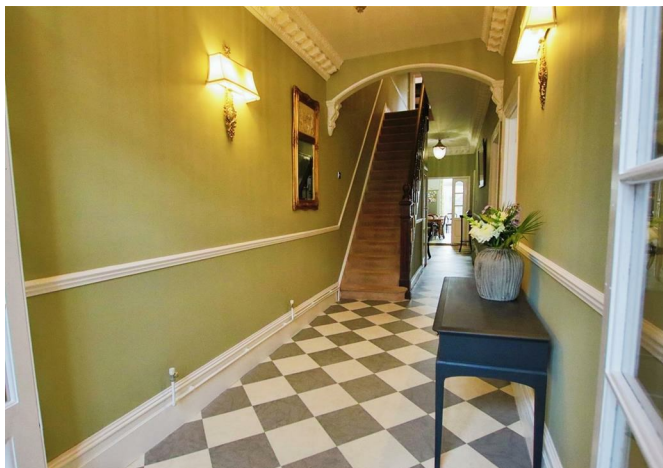


Chimneypots

ESTATE AGENTS

YOUR HOME • OUR PASSION

Montague Road, Portsmouth,
£395,000



- A stunning family residence in a great central location
- Simply amazing space throughout with character features
- Five generous double bedrooms, four piece family bathroom and ground floor shower room
 - Beautifully presented lounge with wood burning stove
- Separate dining room with cast iron fireplace leading into 17ft utility room
 - Kitchen/breakfast room overlooking the rear garden
 - Extremely impressive entrance and hallway
- Ample storage across three floors and private rear garden
 - Vendor suited!

Step inside this stunning family residence located in a prime central location, offering the perfect combination of space, charm, and modern comforts. Situated in an excellent school and college catchment area, this property is ideal for the growing or established family.

With character features and an extremely impressive entrance and hallway, this home exudes an inviting atmosphere from the moment you arrive. The lounge features a wood burning stove, while the dining room showcases a beautiful cast iron fireplace, creating cozy spaces for gatherings with loved ones.

The kitchen/breakfast room overlooks the rear garden, providing a tranquil setting for enjoying morning coffee or preparing meals. Additionally, the ground floor utility/shower room adds convenience to daily life.

With four generously sized double bedrooms, one charming single bedroom, as well as a family bathroom, this home offers plenty of space for the whole family to spread out and relax.

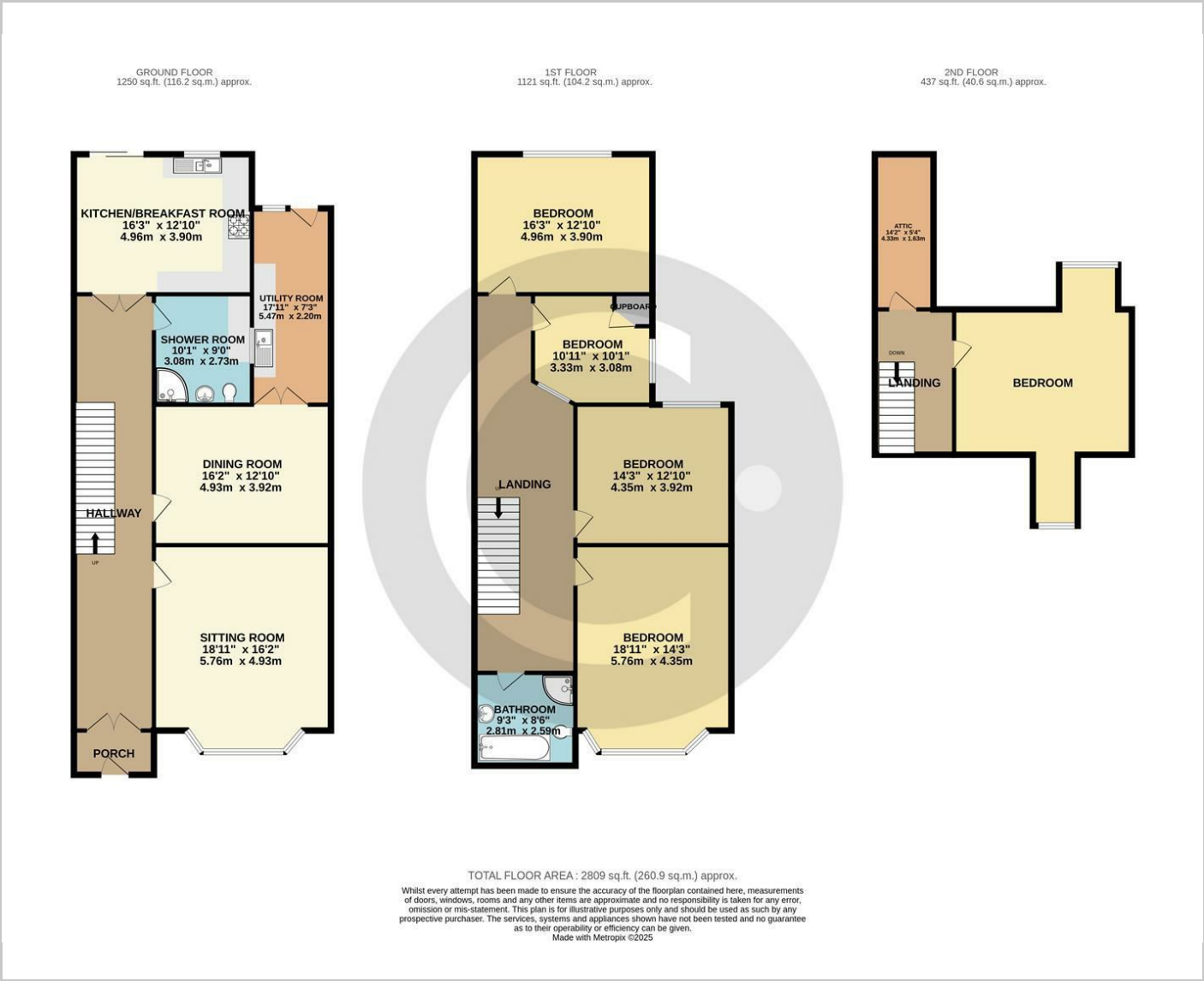
The property is in excellent condition and has been lovingly maintained, ensuring a comfortable and enjoyable living environment for years to come.

Located in a sought-after area, residents can enjoy easy access to local amenities, parks, and transportation links. Nearby points of interest include stunning green spaces perfect for family picnics, as well as top-rated schools and colleges for academic achievement.

Council Tax Band: C



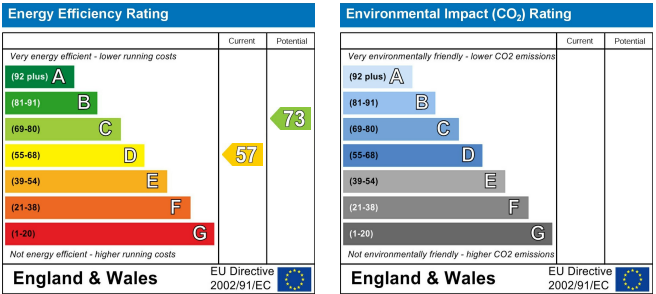
Floor Plans



Area Map



Energy Performance Graph



These particulars, whilst believed to be accurate are set out as a general outline only for guidance and do not constitute any part of an offer or contract. Intending purchasers should not rely on them as statements of representation of fact, but must satisfy themselves by inspection or otherwise as to their accuracy. No person in this firms employment has the authority to make or give any representation or warranty in respect of the property.