



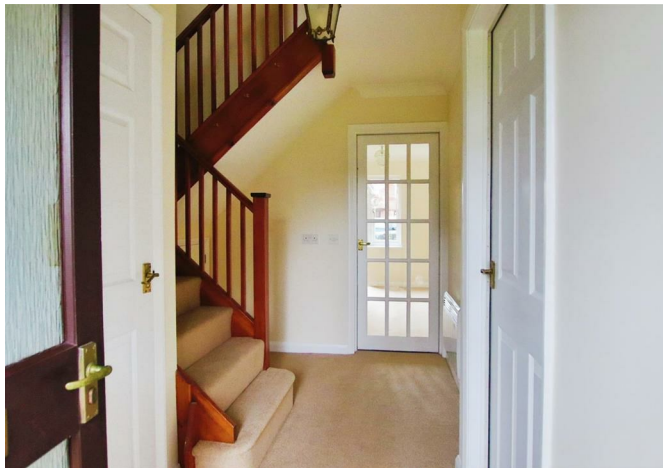
Chimneypots

ESTATE AGENTS

YOUR HOME • OUR PASSION

The Chestnuts, Locks Road, Locks Heath, SO31  
**£210,000**





- A beautifully presented home offering bright and spacious accommodation
- This retirement development offers a delightful haven for the over 55's and a sense of security with 24/7 emergency support on call
- Benefitting recent redecoration throughout and newly fitted energy saving dimplex wall heaters and UPVC windows.
  - Pleasant lounge with doors out to the communal gardens
  - Two double bedrooms, bathroom and ground floor WC
- The Locks Heath Centre with its variety of shops, doctors and eateries is approximately half a mile on foot or just five minutes in the car
  - NO FORWARD CHAIN



This terraced house, nestled in the peaceful community of The Chestnuts, provides the perfect home for those seeking a secure and welcoming environment and benefits NO FORWARD CHAIN. Located just off Locks Road, this over 55s development offers residents a balance of independence and a sense of community.

As you step inside, you are welcomed by a reception hall that leads to a convenient ground floor cloakroom - perfect for eliminating unnecessary trips up the stairs. The living room, positioned at the rear of the property, offers a peaceful retreat with doors that open up to a patio area.

The kitchen, located towards the front, comes equipped with fitted units, making meal preparation a breeze. Upstairs, you will find two bedrooms and a bathroom with a spacious cupboard for storage.

The property further benefits recent redecoration throughout and newly fitted energy saving dimplex wall heaters and UPVC windows.

Although parking is not allocated, there are plenty of spaces available on a first-come, first-served basis, ensuring convenience for residents and their guests. Beyond the patio area, residents can enjoy the communal gardens, providing additional outdoor space for relaxation. There is also a laundry room and lodge on site hosting social classes for all residents.

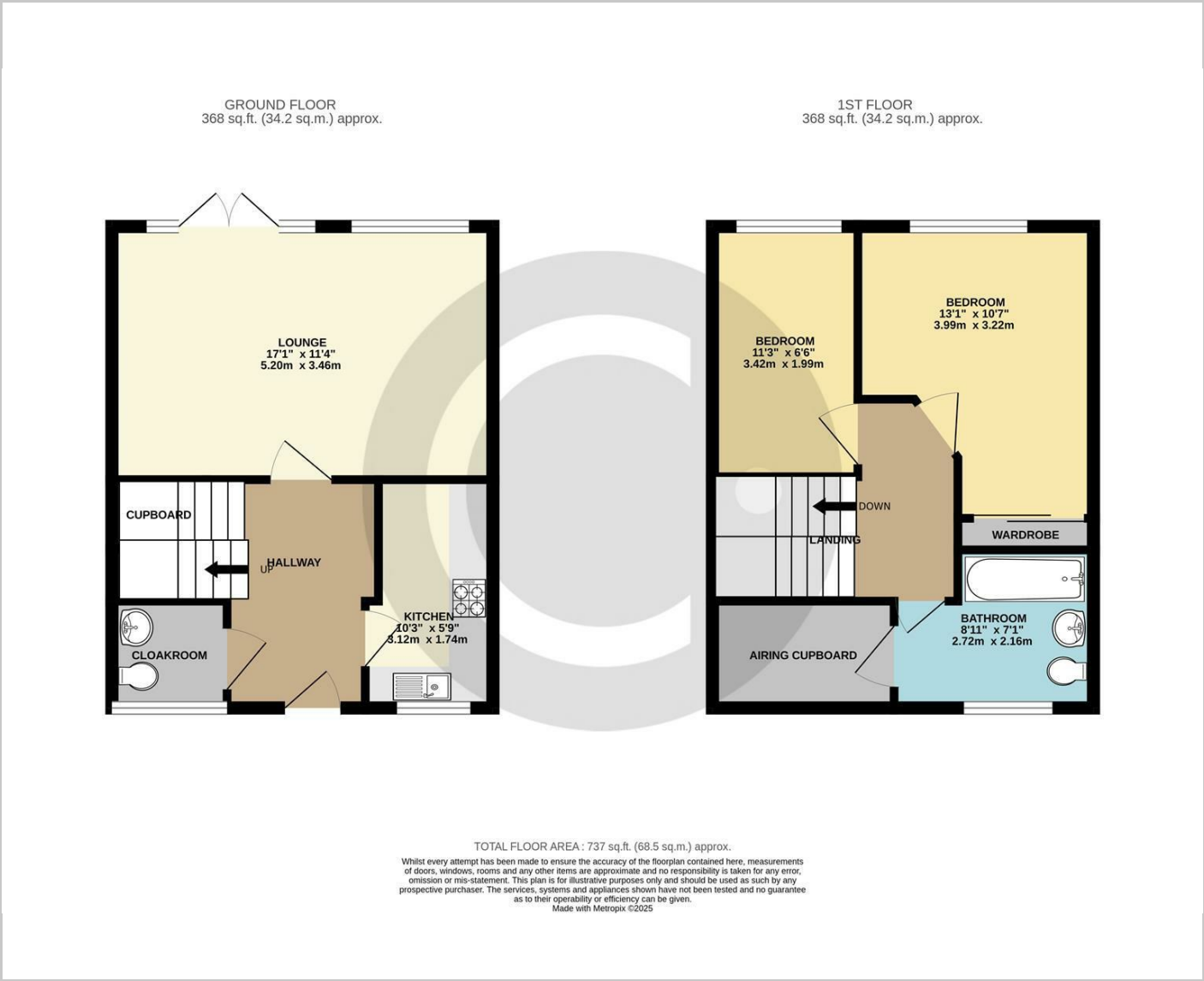
The Chestnuts is ideally situated close to local amenities, including shops, restaurants, and nearby parks. For those who enjoy picturesque walks, the beautiful countryside surroundings offer a peaceful setting for leisurely strolls. This property truly offers the perfect blend of comfort, convenience, and community for retirees looking to downsize.

Council Tax Band: C

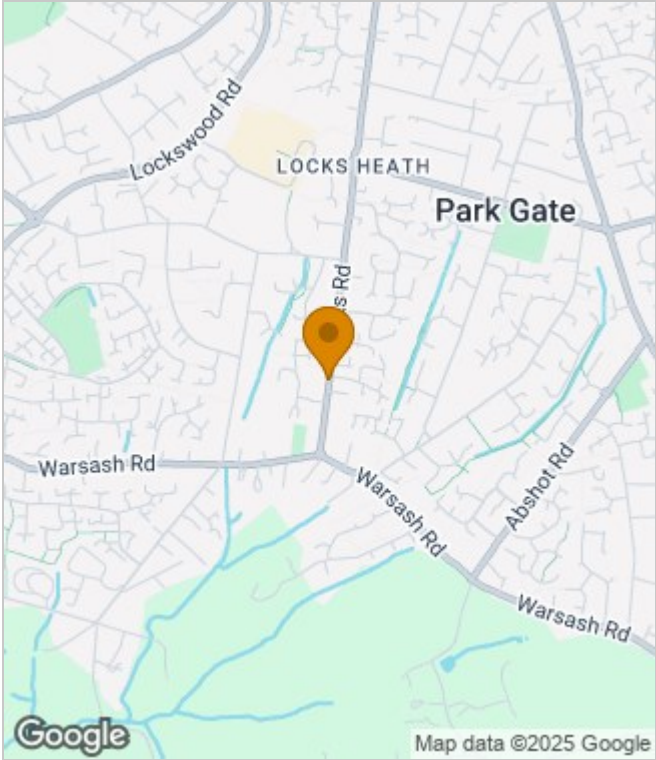




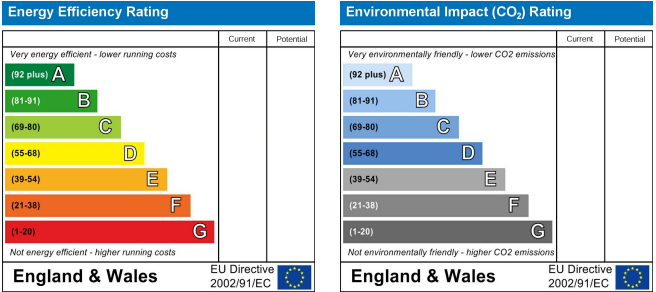
Floor Plans



Area Map



Energy Performance Graph



These particulars, whilst believed to be accurate are set out as a general outline only for guidance and do not constitute any part of an offer or contract. Intending purchasers should not rely on them as statements of representation of fact, but must satisfy themselves by inspection or otherwise as to their accuracy. No person in this firms employment has the authority to make or give any representation or warranty in respect of the property.