



Cavendish Drive Locks Heath, Southampton, SO31 6BP
£350,000



- End-of-terrace family home
- Three double bedrooms
- Modern kitchen with integrated appliances
 - Spacious and light lounge/diner
 - Main bathroom, en-suite and WC
 - Low maintenance rear garden
 - Car port with two parking spaces
 - Close To Local Amenities

We are happy to present this modern 3 bedroom end-of-terrace house with car port for 2 parking spaces.

Owned since new, this lovely three-bedroom home is situated within the highly sought-after Strawberry Fields development. This superb family home has been thoughtfully designed to suit modern-day living. The generous kitchen is well-equipped, featuring a good range of units, worktop surfaces, and built-in appliances including an oven, hob, extractor hood, integrated dishwasher, washing machine, and fridge freezer.

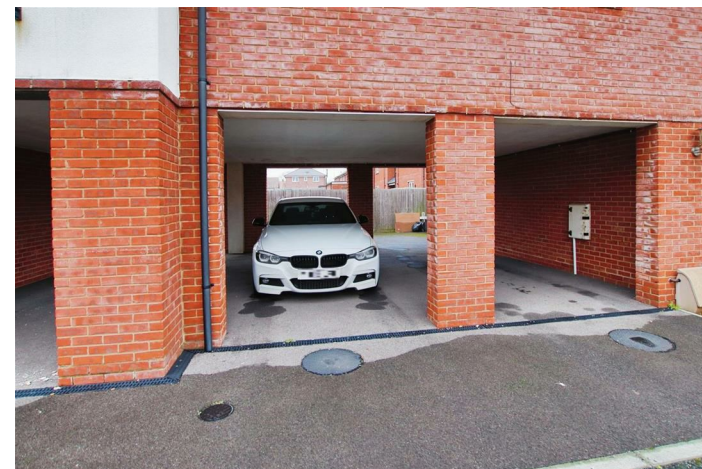
The light and airy sitting/dining room to the rear boasts French-style doors opening onto the rear garden terrace, along with a feature bay window to the side elevation, adding character and space.

It also features a convenient downstairs cloakroom and understairs storage.

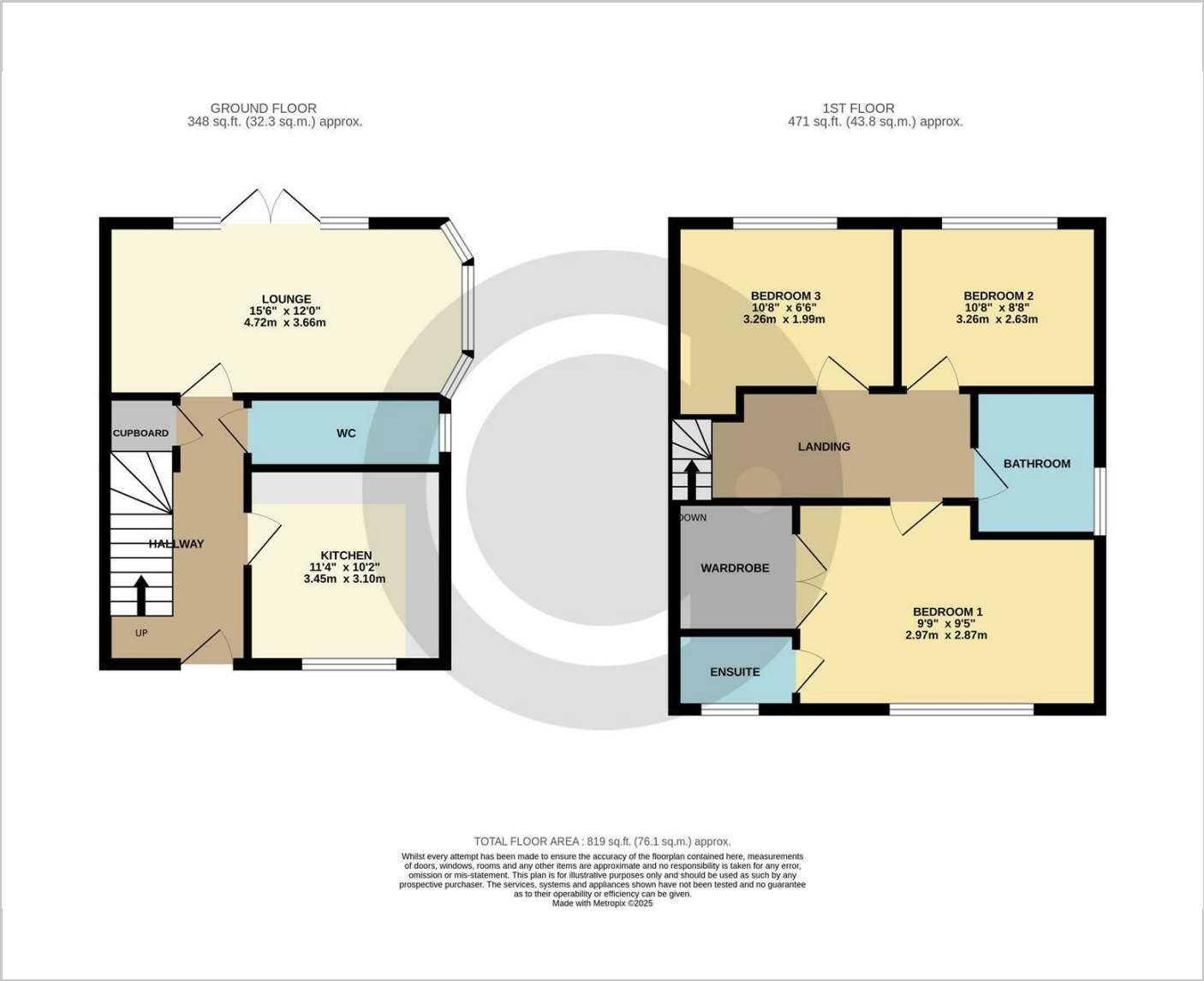
The first floor offers three well-proportioned bedrooms, with the master benefiting from an en-suite and built in wardrobes.

The rear garden is a mix of patio and lawn, perfect for outdoor living, and includes a garden shed for extra storage. There is rear access to the side of the property. The property also benefits ample visitor parking nearby.

Within easy reach of Holly Hill Leisure Centre and Locks Heath Shopping Centre, home to Waitrose and a range of other shopping and leisure opportunities.



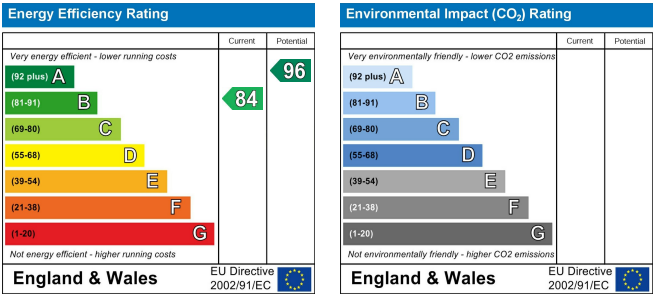
Floor Plans



Area Map



Energy Performance Graph



These particulars, whilst believed to be accurate are set out as a general outline only for guidance and do not constitute any part of an offer or contract. Intending purchasers should not rely on them as statements of representation of fact, but must satisfy themselves by inspection or otherwise as to their accuracy. No person in this firms employment has the authority to make or give any representation or warranty in respect of the property.