



Chimneypots

ESTATE AGENTS

YOUR HOME • OUR PASSION

Hound Manor, Hound Road, Netley Abbey, SO31  
£290,000





- A stunning Grade 2 listed first-floor apartment in a beautiful manor house
  - Spacious accommodation throughout
- Charming dining/reception hallway with a stunning vaulted glass ceiling
  - Character lounge overlooking the grounds
  - Modern kitchen with integrated appliances
    - 16ft master bedroom with en-suite
- Modernised sash style windows with shutters throughout
  - Ideally located close to Netley and Hamble villages
    - Offering a share of freehold

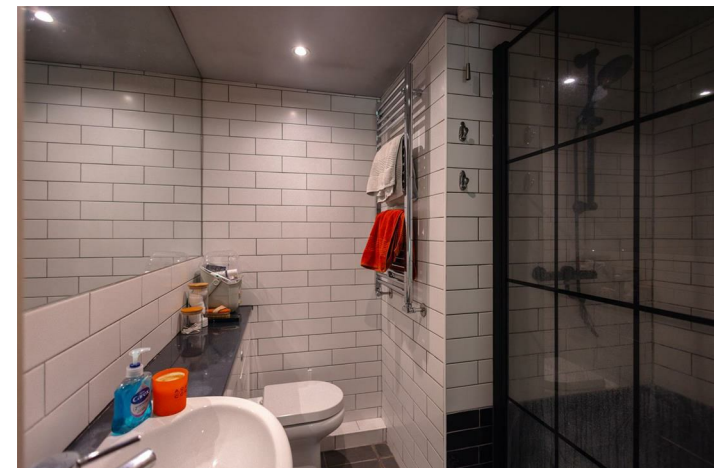


Located in the prestigious grounds of Hound Manor, this immaculately presented apartment boasts a charming dining/reception hallway with a stunning vaulted glass ceiling as its focal point. The kitchen, en suite, and family bathroom have all been thoughtfully designed to a high standard, ensuring a comfortable and contemporary living space.

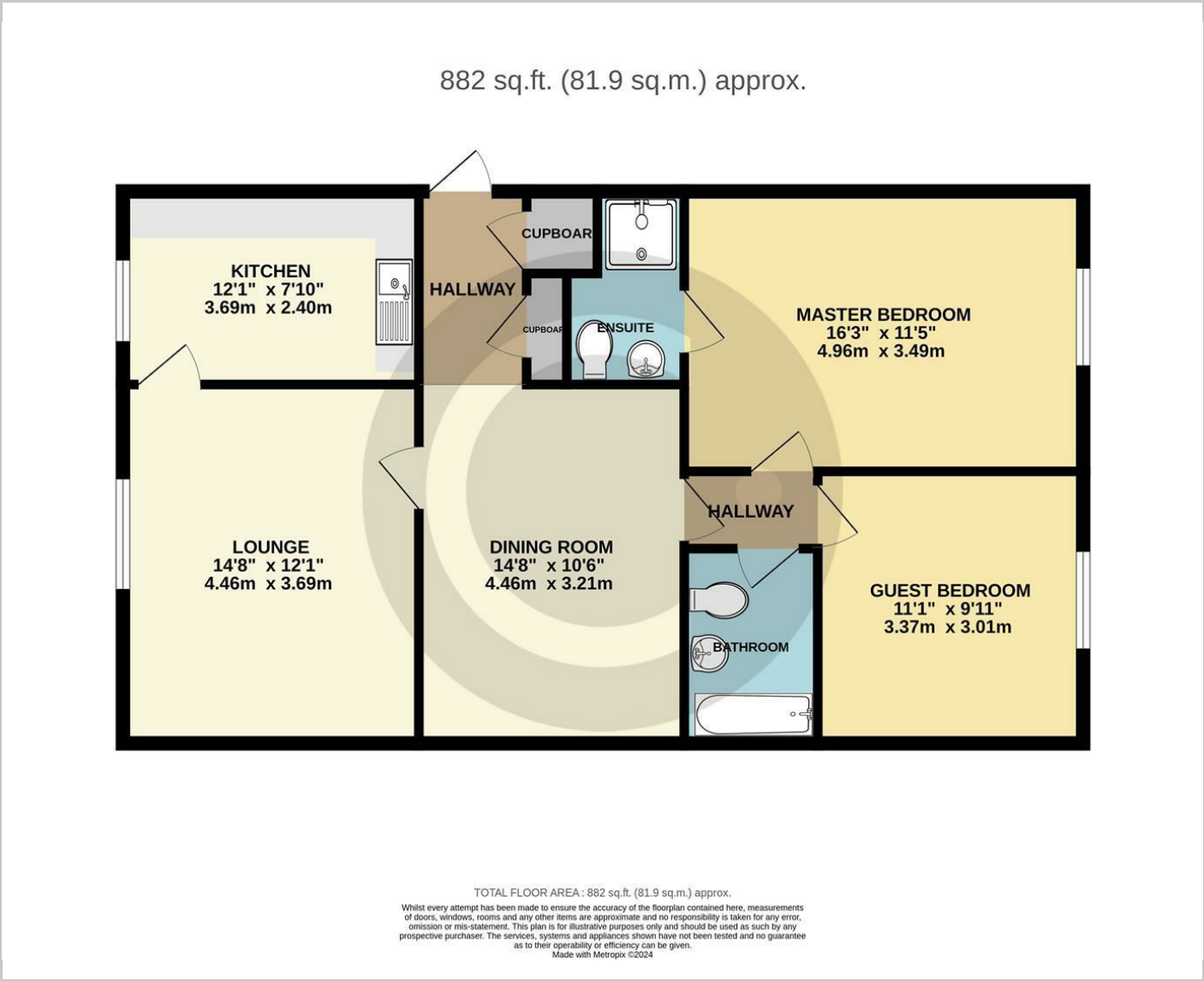
Overlooking the lush grounds of Hound Manor, the property offers picturesque views of the surrounding horse field and leafy landscape and situated in a converted building with a private driveway, this apartment provides a tranquil retreat from the bustling city life.

Surrounded by natural beauty, residents can enjoy leisurely walks in the peaceful grounds of Hound Manor or explore the nearby countryside. Close proximity to local amenities and transport links make this property conveniently located for both relaxation and convenience.

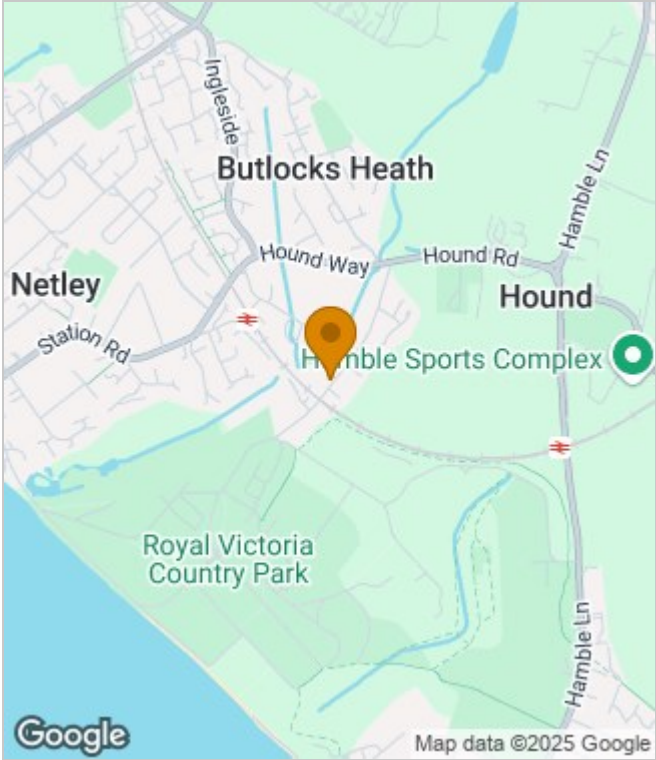
Don't miss the opportunity to view this beautifully converted apartment with a share of freehold.



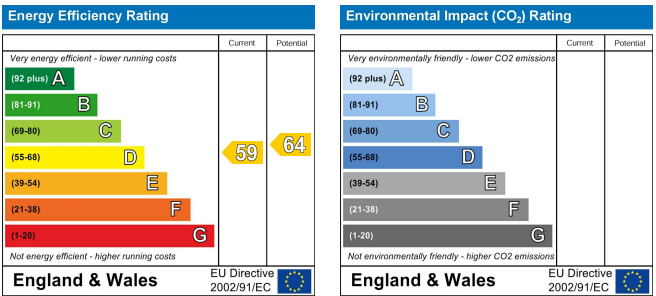
Floor Plans



Area Map



Energy Performance Graph



These particulars, whilst believed to be accurate are set out as a general outline only for guidance and do not constitute any part of an offer or contract. Intending purchasers should not rely on them as statements of representation of fact, but must satisfy themselves by inspection or otherwise as to their accuracy. No person in this firms employment has the authority to make or give any representation or warranty in respect of the property.