


A circular logo for Chimney Pots Estate Agents. The text 'Chimney Pots' is in a large, white, sans-serif font. Below it, 'ESTATE AGENTS' is written in a smaller, green, sans-serif font. At the bottom of the circle, the tagline 'YOUR HOME • OUR PASSION' is written in a white, sans-serif font, following the curve of the circle.

Chimney Pots
ESTATE AGENTS

YOUR HOME • OUR PASSION

A photograph of a two-story red brick house with white window frames and a tiled roof. The house is surrounded by greenery, including trees and bushes. A small sign on the wall indicates 'No 5' and 'No 6'. The sky is blue with some clouds.

5 Beechwood Close, Warsash, SO31 9JX
£230,000



- First-floor maisonette with NO FORWARD CHAIN
 - Redecorated and new carpets throughout
 - Two generous double bedrooms
 - Bathroom and separate toilet
 - 16ft lounge/diner
 - Light kitchen overlooking the rear garden
 - Garage with parking in front
 - Gas central heating & double glazing
 - Ideally located in Warsash

Nestled in the heart of Warsash, this two-bedroom first-floor Maisonette comes to the market with no forward chain and has been beautifully redecorated with new carpets throughout to offer a light and airy atmosphere.

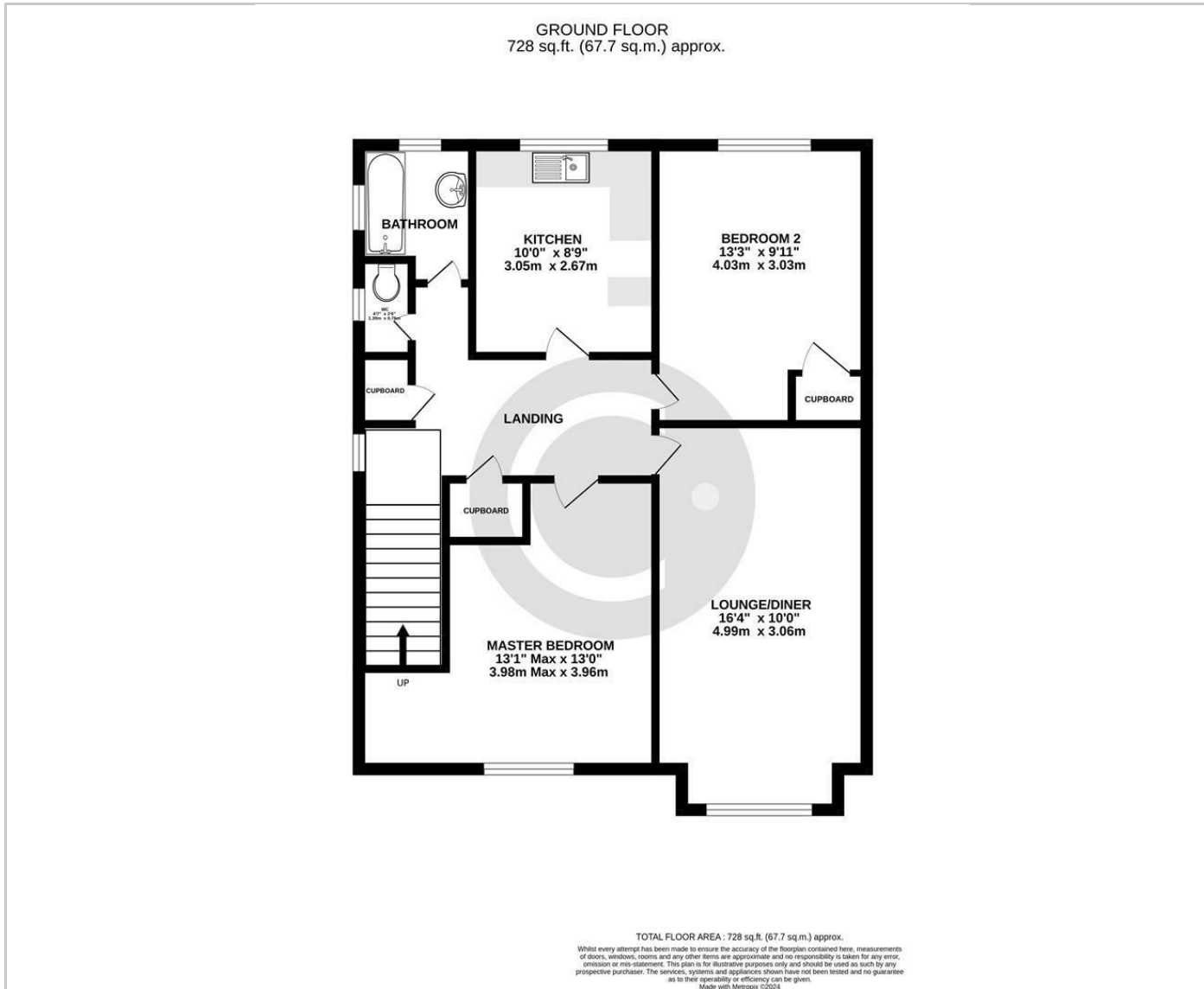
Upon entering the stairs lead up to a spacious hallway with ample storage and provides access to all rooms.

Two generous double bedrooms, the second boasting a fitted wardrobe, a modern bathroom with a separate toilet, a 16ft lounge/diner offering the perfect space to relax, and the kitchen with space for an oven, hob, fridge/freezer, and plumbing for a washing machine. This also overlooks the rear garden.

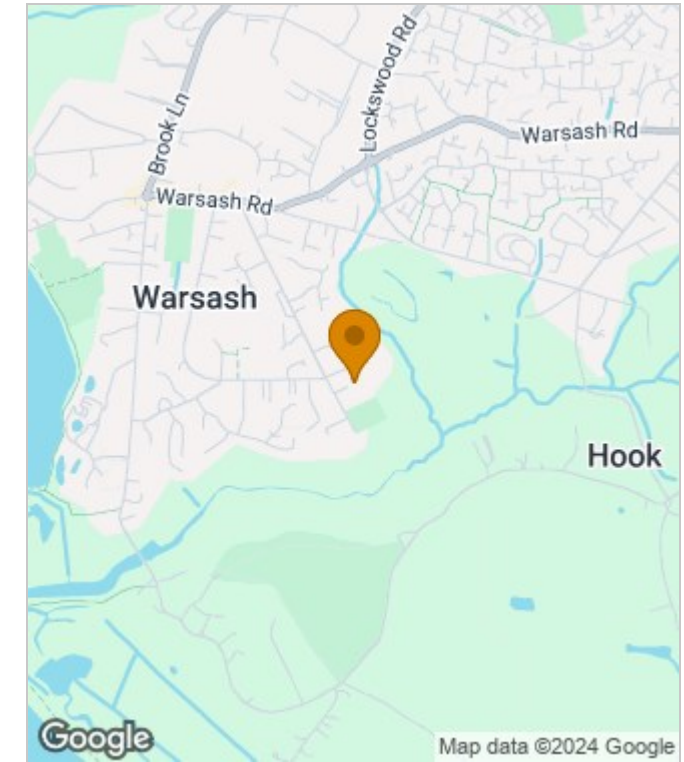
The property also features a garage with parking in front, gas central heating, and double glazing.



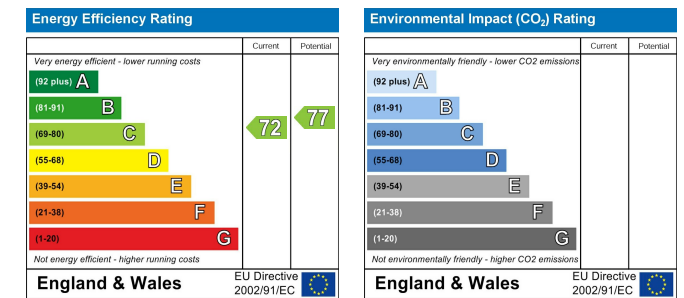
Floor Plans



Area Map



Energy Performance Graph



These particulars, whilst believed to be accurate are set out as a general outline only for guidance and do not constitute any part of an offer or contract. Intending purchasers should not rely on them as statements of representation of fact, but must satisfy themselves by inspection or otherwise as to their accuracy. No person in this firm's employment has the authority to make or give any representation or warranty in respect of the property.