

Chimney pots

ESTATE AGENTS

YOUR HOME • OUR PASSION





Jerome Street, Whiteley, Fareham

£400,000

- A beautifully presented family home offering bright and spacious accommodation
- A well equipped Kitchen/ breakfast room with doors out to the rear garden and a separate utility room
 - Lounge and dining room
- Three double bedrooms, two en-suite shower rooms and family bathroom
 - Garage and driveway
- Offered for sale with no forward chain
- An internal viewing is highly recommended

Step inside this beautifully maintained townhouse in the desirable location of Whiteley.

Spread across three floors, this property boasts three generous double bedrooms, including a spacious master with a modern ensuite bathroom and built-in wardrobes. The additional family bathroom offers a relaxing space with a bath and contemporary fixtures.

On the ground floor, the property welcomes you with a stylish entrance hall featuring convenient storage cupboards and a ground floor W/C. The separate dining room provides an ideal space for entertaining, whilst the modern kitchen with breakfast bar and utility area is perfect for everyday living.

The first floor offers a king-size bedroom with an ensuite, along with a bright and airy living area complete with Juliett balcony and large windows. The second floor continues to impress with an additional double bedroom and a third bedroom with ample storage space.

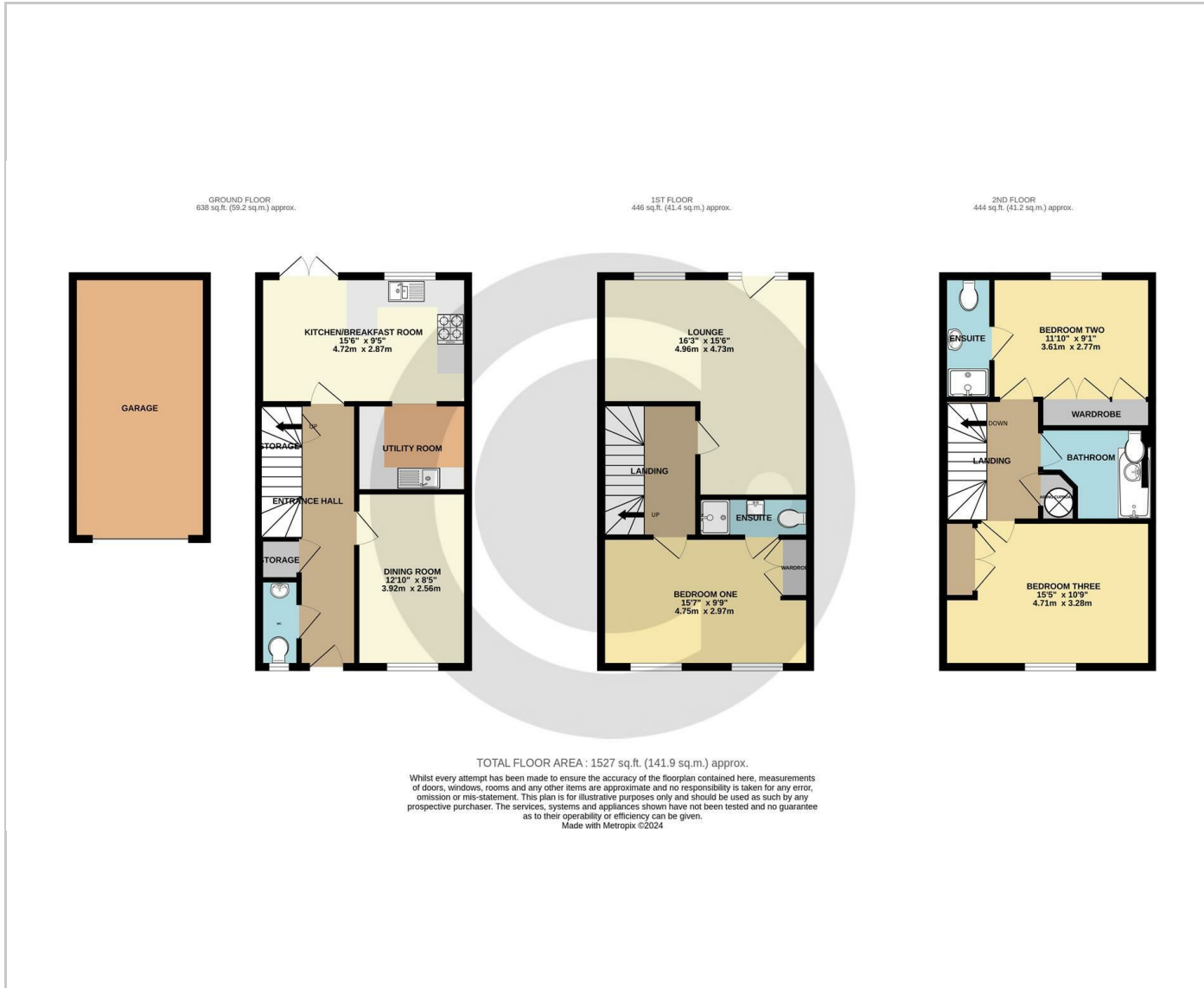
Externally, the property benefits from a garage and allocated parking space, as well as a manageable yet inviting rear garden with patio and turfed area.

Located in Whiteley, this property sits in a prime location close to a range of amenities including shops, restaurants, and schools. The area also offers fantastic transport links, making it easy to reach nearby attractions such as the expansive Solent Business Park and the beautiful Hamble River for leisurely walks.

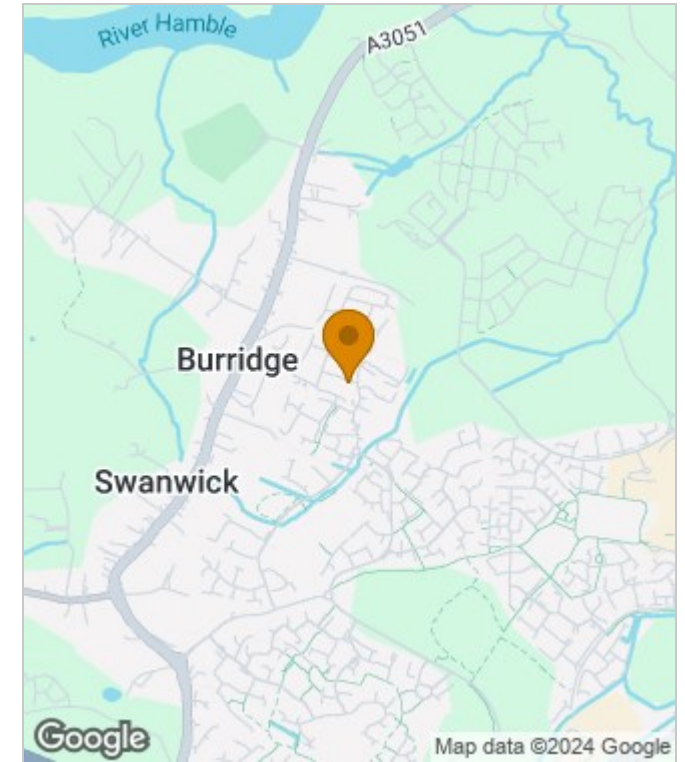
Council Tax Band: E



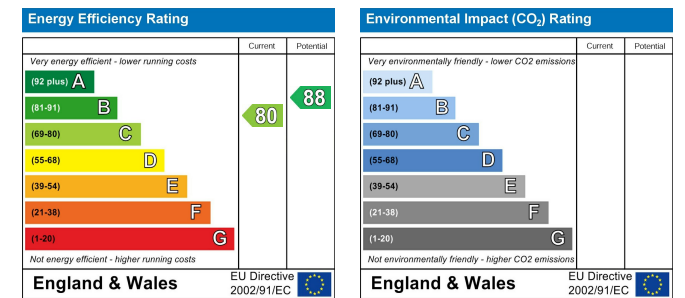
Floor Plans



Area Map



Energy Performance Graph



These particulars, whilst believed to be accurate are set out as a general outline only for guidance and do not constitute any part of an offer or contract. Intending purchasers should not rely on them as statements of representation of fact, but must satisfy themselves by inspection or otherwise as to their accuracy. No person in this firm's employment has the authority to make or give any representation or warranty in respect of the property.