

A circular logo with a dark background. The text 'Chimneypots' is written in a large, white, serif font. Below it, 'ESTATE AGENTS' is written in a smaller, green, sans-serif font. At the bottom of the circle, the words 'YOUR HOME' and 'OUR PASSION' are written in white, separated by a small green dot.

Chimneypots

ESTATE AGENTS

YOUR HOME • OUR PASSION



Montefiore Drive, Sarisbury Green, SO31 7NG
£485,000



- Semi-detached family home beautifully enhanced by the current owners
 - Spacious accommodation across three floors
 - 28ft modern kitchen/family room
 - Three large double bedrooms
 - Bathroom suite, shower room and WC
 - Utility room with access to the rear
 - Bespoke window shutters throughout
- Private garden with a lovely patio area and laid with artificial lawn
 - Off-road parking leading to the garage
 - Private road into the cul-de-sac

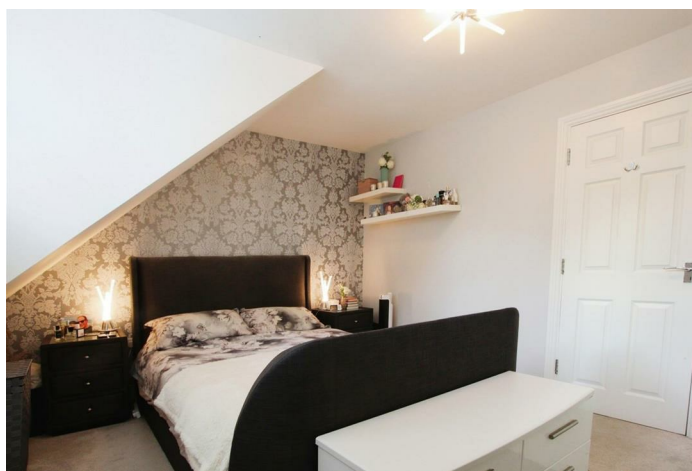
Welcome to this inviting semi-detached family home nestled within a peaceful cul-de-sac, accessible via a private road. Offering generous living space across three floors, this property presents the perfect canvas for comfortable family living.

Upon arrival, a welcoming and bright entrance hall greets you, featuring a convenient storage cupboard. The heart of the home is a spacious 28ft modern kitchen/family room boasting integrated appliances, a matching range of eye and base-level units, and extra room for a fridge freezer. The family area can also easily double as a dining room and French double doors open out to the rear of the property. Completing the ground floor, a utility room provides access to a WC ensuring added convenience.

As you ascend to the first floor, the living room is illuminated by twin double-glazed windows that face the front of the property, providing a lovely view of the surrounding woodland and can be effortlessly transformed into an additional bedroom if needed. The first of the three bedrooms gives you a taste of the abundant space that characterizes this home and provides access to the well-appointed bathroom suite.

A final set of stairs leads you to the top floor, where two more large double bedrooms come complete with fitted wardrobes, ensuring ample storage, and are accompanied by a convenient shower room.

Stepping outside, you'll find a private garden that has been beautifully enhanced by the current owners. The front boasts a patio area, perfect for al fresco dining, and the lawn is adorned with artificial turf, ensuring low-maintenance upkeep. A side gate also offers ideal access to the property, completing this charming family home.



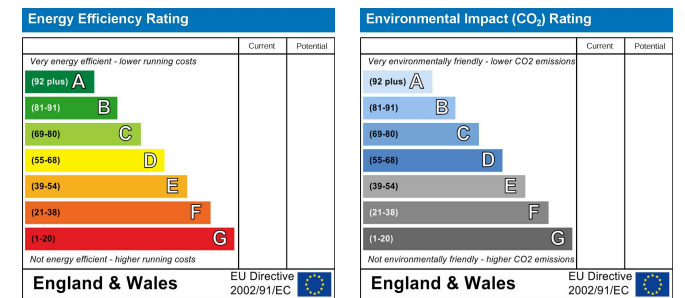
Floor Plans



Area Map



Energy Performance Graph



These particulars, whilst believed to be accurate are set out as a general outline only for guidance and do not constitute any part of an offer or contract. Intending purchasers should not rely on them as statements of representation of fact, but must satisfy themselves by inspection or otherwise as to their accuracy. No person in this firm's employment has the authority to make or give any representation or warranty in respect of the property.