

A circular logo for Chimney Pots Estate Agents. The text 'Chimney Pots' is in a large, white, sans-serif font. Below it, 'ESTATE AGENTS' is written in a smaller, green, sans-serif font. The tagline 'YOUR HOME • OUR PASSION' is written in white, curved text along the bottom edge of the circle.

Chimney Pots
ESTATE AGENTS

YOUR HOME • OUR PASSION



Sandyfields Lane, Colden Common,
£385,000



- A beautifully presented semi detached home offering bright and spacious accommodation
 - Stunning kitchen/diner extending across the rear with integrated appliances
 - Cozy lounge
 - Three bedrooms, en-suite and family bathroom
 - Enclosed garden and allocated parking
 - Within catchment of Kings School

This beautiful three bedroom semi-detached home on Sandyfields Lane is the perfect blend of style, comfort, and practicality, making it an ideal choice for families and couples looking to settle down in the heart of Colden Common.

As you step inside, you are welcomed to the lobby, offering ample storage space for coats and shoes. The spacious lounge area offers warmth and sophistication, providing the perfect setting for relaxation or entertainment. The modern kitchen is a focal point of the ground floor, designed for sociable living with ample storage and integrated appliances.

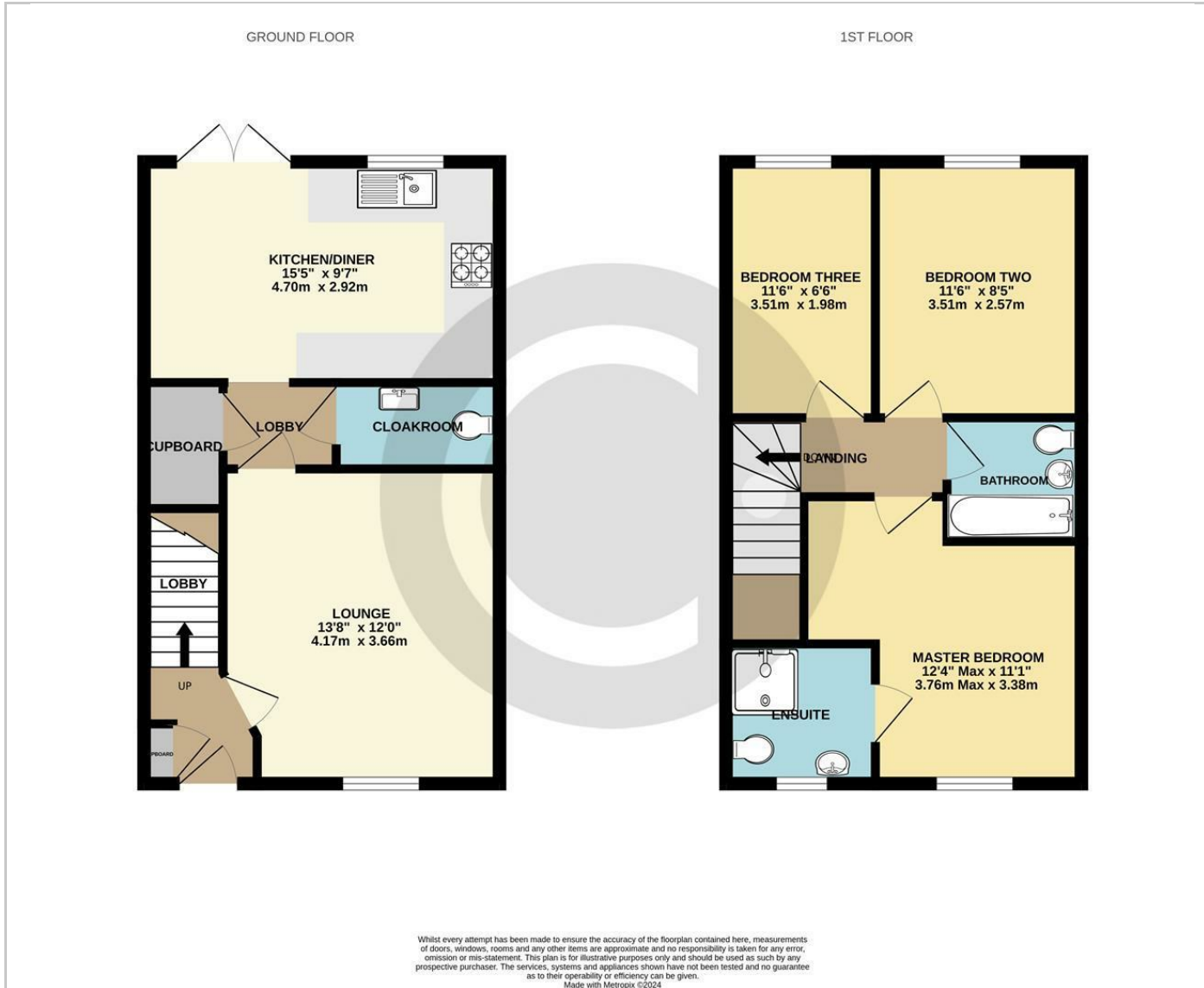
Upstairs, you will find three generously sized bedrooms, including a master bedroom with an en suite shower room for added luxury and convenience. The family bathroom is well-presented and offers a tranquil retreat for the whole household.

Externally, the property has two off-road parking spaces and a low-maintenance garden, perfect for enjoying the outdoors and soaking up the sunshine. The property's excellent condition and convenient amenities make it an exceptional opportunity for discerning buyers seeking a relaxed lifestyle in Colden Common.

Situated in the heart of Colden Common, residents can enjoy the nearby amenities such as shops, schools, and parks. The area offers excellent transport links and is within easy reach of surrounding towns and cities, making it a convenient location for both work and leisure.



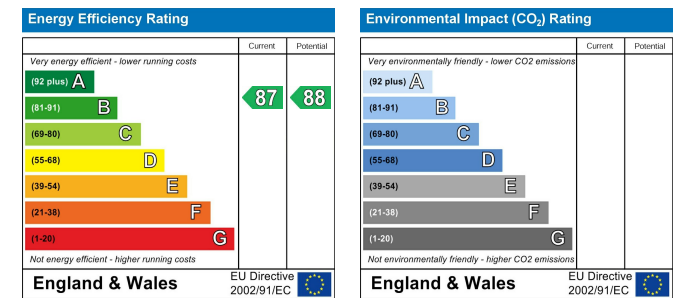
Floor Plans



Area Map



Energy Performance Graph



These particulars, whilst believed to be accurate are set out as a general outline only for guidance and do not constitute any part of an offer or contract. Intending purchasers should not rely on them as statements of representation of fact, but must satisfy themselves by inspection or otherwise as to their accuracy. No person in this firm's employment has the authority to make or give any representation or warranty in respect of the property.