



Chimney Pots
ESTATE AGENTS

YOUR HOME • OUR PASSION

Gardenia Drive, Titchfield Park, Fareham

Guide Price £280,000



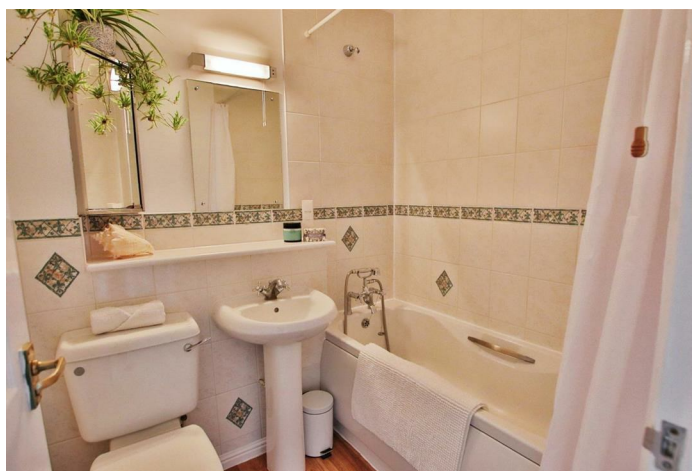
- Tucked away terraced home with NO FORWARD CHAIN
 - Recently redecorated with new carpets throughout
 - Lounge/diner with patio doors leading to the garden
 - Fitted kitchen overlooking the front aspect
- Two double bedrooms, modern bathroom and handy cloakroom
 - Sunny rear garden
 - Garage with parking in front
 - In a pleasant cul de sac location

Located in the desirable area of Titchfield Park, this charming terraced house is ideal for first time buyers, small families or investors with NO FORWARD CHAIN. Situated in a peaceful corner of the close, you can conveniently park in front of the garage on the driveway before entering through the welcoming porch. With a well-equipped kitchen, spacious lounge/dining area with garden access, and a helpful cloakroom on the ground floor, this home offers practical living spaces.

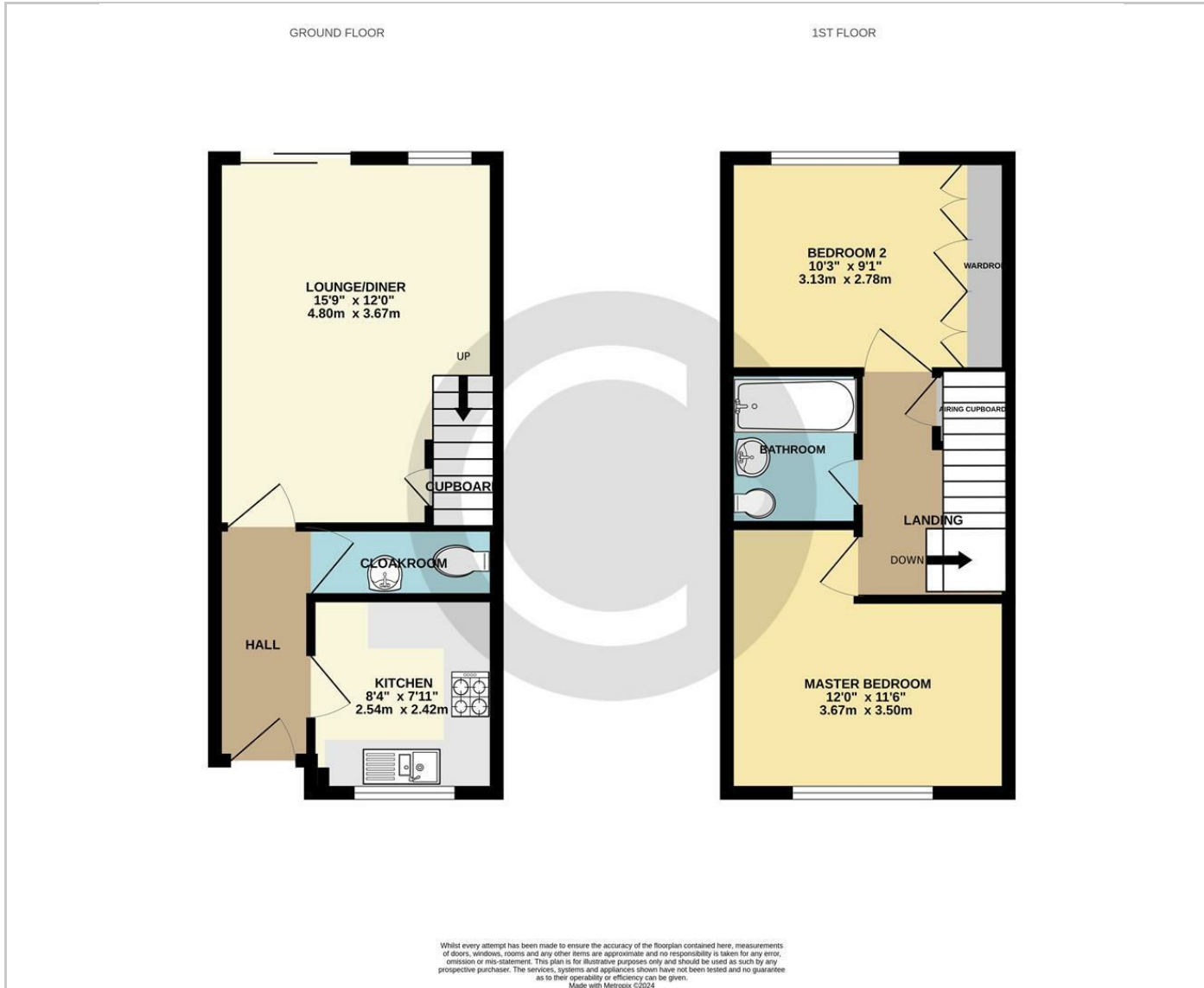
The first floor offers two double bedrooms, with the master bedroom featuring fitted wardrobes, and a family bathroom complete with a shower over the bath. This property has been redecorated with new carpets throughout and is ready for a new owner to move in.

Titchfield Park is a lovely location with plenty of green spaces and scenic views. Nearby amenities include schools, shops, and transport links, making it a convenient place to live. Don't miss the opportunity to view this terraced home.

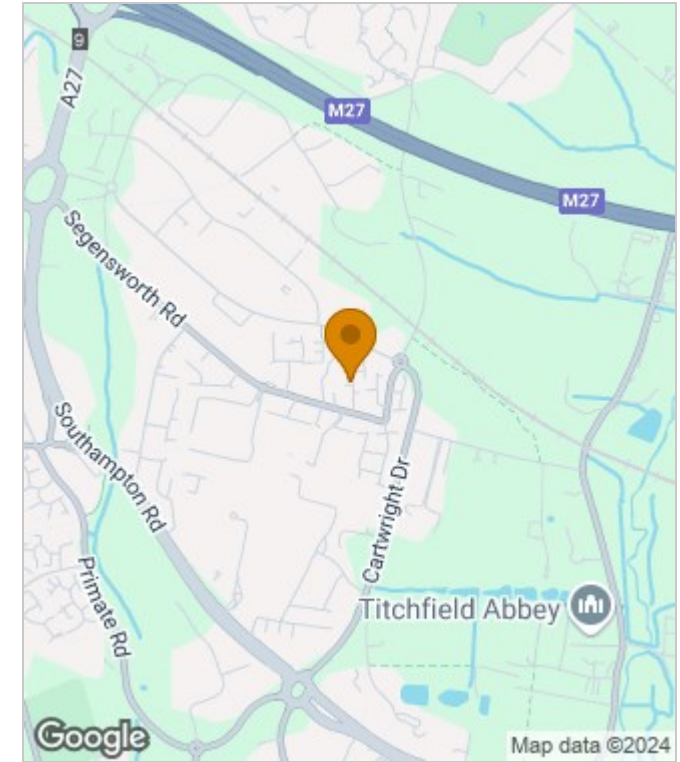
Council Tax Band: C Fareham



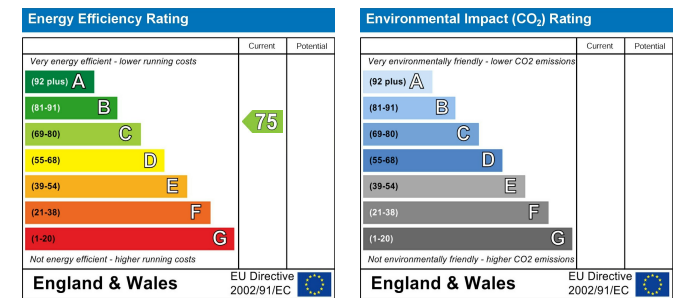
Floor Plans



Area Map



Energy Performance Graph



These particulars, whilst believed to be accurate are set out as a general outline only for guidance and do not constitute any part of an offer or contract. Intending purchasers should not rely on them as statements of representation of fact, but must satisfy themselves by inspection or otherwise as to their accuracy. No person in this firm's employment has the authority to make or give any representation or warranty in respect of the property.