

A circular logo for Chimney Pots Estate Agents. The text 'Chimney Pots' is in a large, white, sans-serif font. Below it, 'ESTATE AGENTS' is written in a smaller, green, sans-serif font. The tagline 'YOUR HOME • OUR PASSION' is written in white, curved text along the bottom edge of the circle.

Chimney Pots
ESTATE AGENTS

YOUR HOME • OUR PASSION



Breach Lane, Bishopstoke, Eastleigh
£400,000



- An immaculate family home offering bright and spacious accommodation
 - Sitting room with contemporary fire
 - Impressive kitchen/dining room with fully integrated appliances
 - Three well proportioned bedrooms, family bathroom and en-suite
 - Landscaped garden with spacious patio area
 - Garage and parking for two vehicles

Modern and contemporary home situated on a prestigious small development.

Occupying a quiet and convenient cul de sac position, it encapsulates the true essence of a family home and is a fine example of modern living.

Located in the heart of the popular Hampshire village of Bishopstoke, this high-quality property has been designed to create light and airy accommodation throughout.

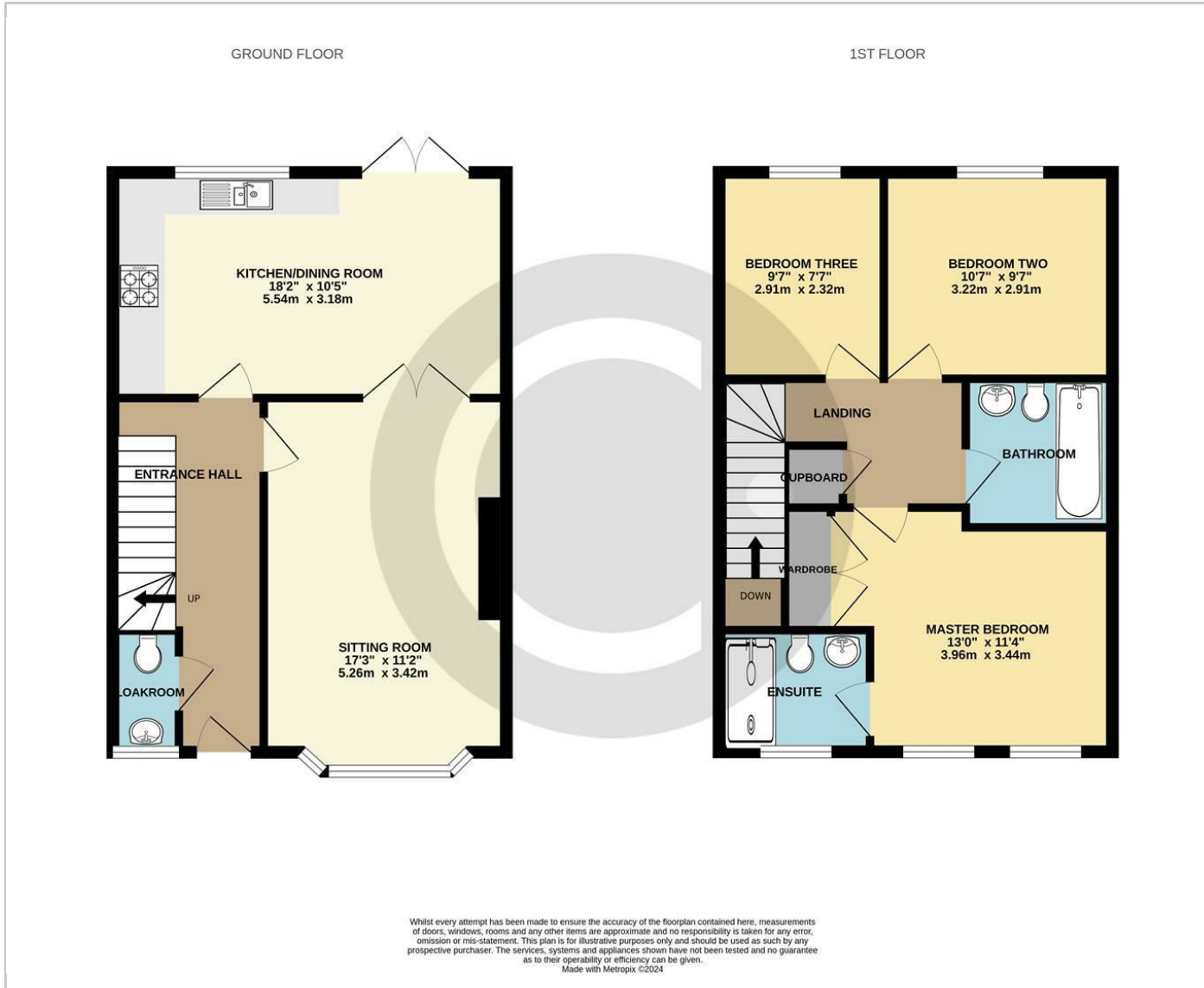
The entrance hall leads to all the principal rooms. The accommodation includes a well-appointed sitting room with a fresh, light, airy design with a beautiful feature fire. The impressive kitchen/dining room is finished to the highest standard, fully fitted with integrated appliances. French doors lead to the landscaped garden beyond. Completing the ground floor is a convenient guest cloakroom and storage cupboards.

On the first floor, the principal bedroom benefits from fitted wardrobes and a en-suite shower room with two further double bedrooms which are all served by the family bathroom. Externally, the private enclosed garden has been beautifully landscaped and well maintained. An elegant patio is the perfect place for an immersive dining experience. To the rear of the property is a garage with power and lighting and parking for two cars. To the front there is a small cottage style garden.

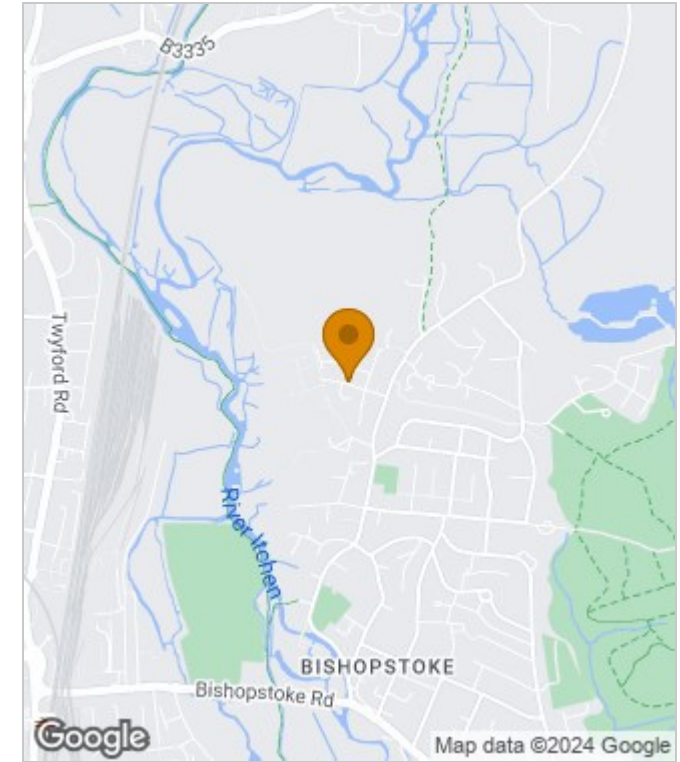
The estates management charge for Mar '24 - Feb '25 is £320.



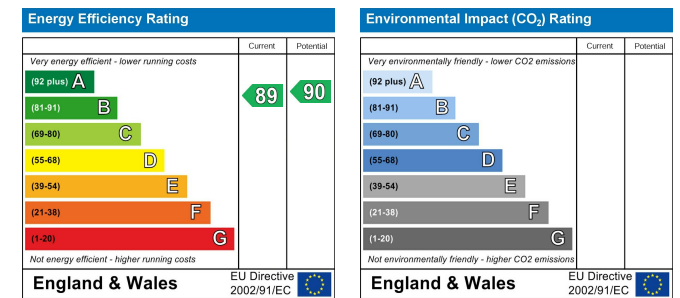
Floor Plans



Area Map



Energy Performance Graph



These particulars, whilst believed to be accurate are set out as a general outline only for guidance and do not constitute any part of an offer or contract. Intending purchasers should not rely on them as statements of representation of fact, but must satisfy themselves by inspection or otherwise as to their accuracy. No person in this firm's employment has the authority to make or give any representation or warranty in respect of the property.