

A circular logo for Chimneypots Estate Agents. The text 'Chimneypots' is in a large, white, sans-serif font. Below it, 'ESTATE AGENTS' is written in a smaller, green, sans-serif font. At the bottom of the circle, the tagline 'YOUR HOME • OUR PASSION' is written in a white, sans-serif font, following the curve of the circle.

Chimneypots

ESTATE AGENTS

YOUR HOME • OUR PASSION

A photograph of a white semi-detached house with a brick base and a tiled roof. The house is viewed from a paved driveway. A large tree is on the left, and a brick wall with a black metal fence is in the foreground. A car is parked in a garage on the right. The sky is blue with some clouds.

Crescent Road, Locks Heath, Southampton
Guide Price £700,000



- Extended Detached Three Bedroom Bungalow
 - Sat On Third OF An Acre Plot
 - 7.5 Meter lounge/Diner
 - Modern Kitchen Breakfast Room
 - Modern Bathroom
 - Ample Parking with Car Port
 - Garage
 - Utility Room/laundry Room
- Enclosed mature private Garden with Out Buildings and Green Houses

A charming location for this extended detached three-bedroom bungalow! Situated on a third of an acre plot, this property boasts a mature private garden with outbuildings and greenhouses, perfect for those with a green thumb or a love for outdoor living.

As you step inside, you are greeted by a spacious 7.5-meter lounge/diner, ideal for entertaining guests or simply relaxing with your loved ones. The modern kitchen breakfast room is perfect for whipping up delicious meals and enjoying casual dining.

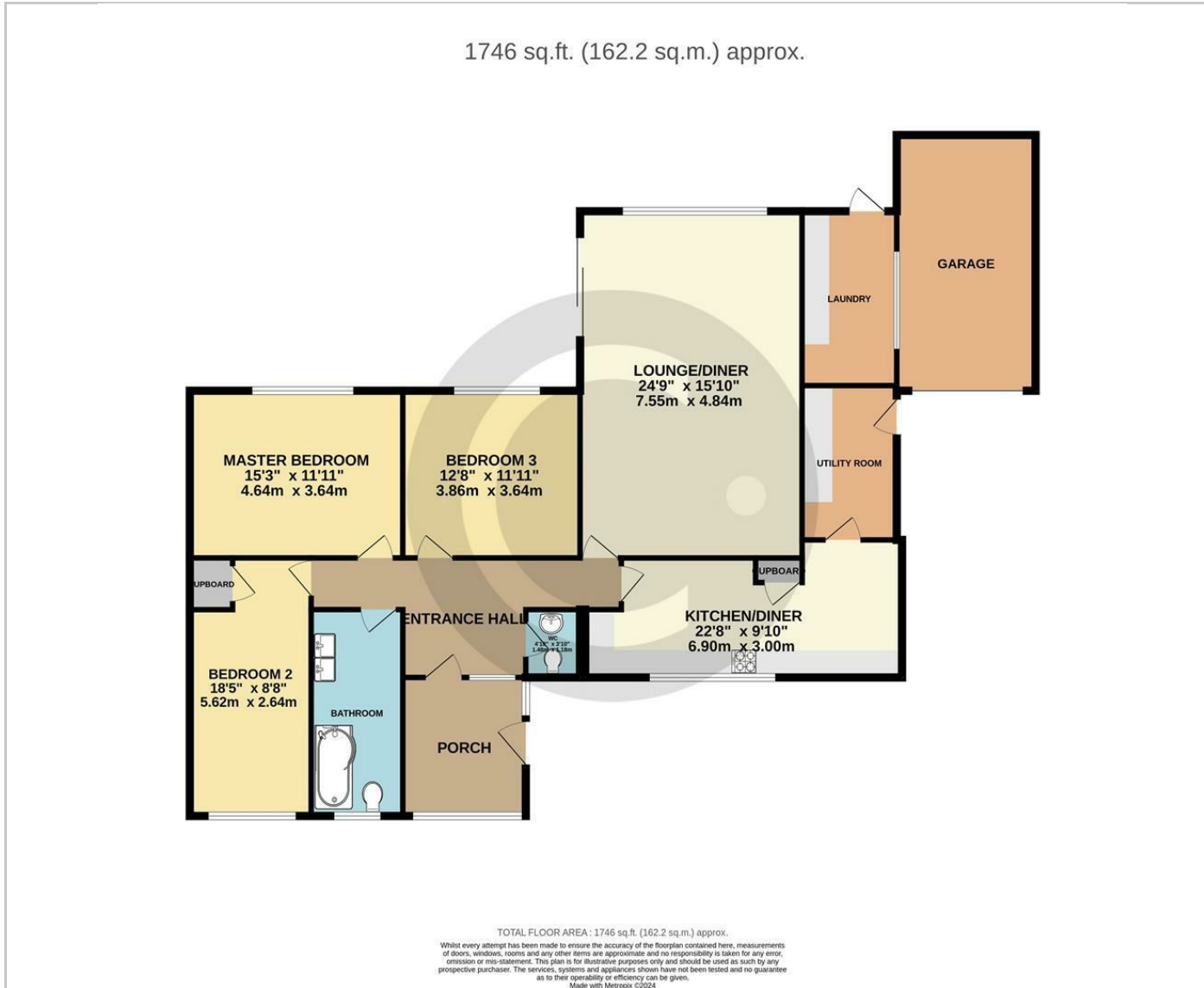
With three bedrooms, there is ample space for a growing family or for those in need of a home office or hobby room. The garage, along with ample parking and a carport, ensures that parking will never be an issue for you or your guests.

This property offers a wonderful blend of indoor and outdoor living, providing a peaceful retreat while still being conveniently located near all the amenities you could need. Don't miss out on the opportunity to make this delightful bungalow your new home!

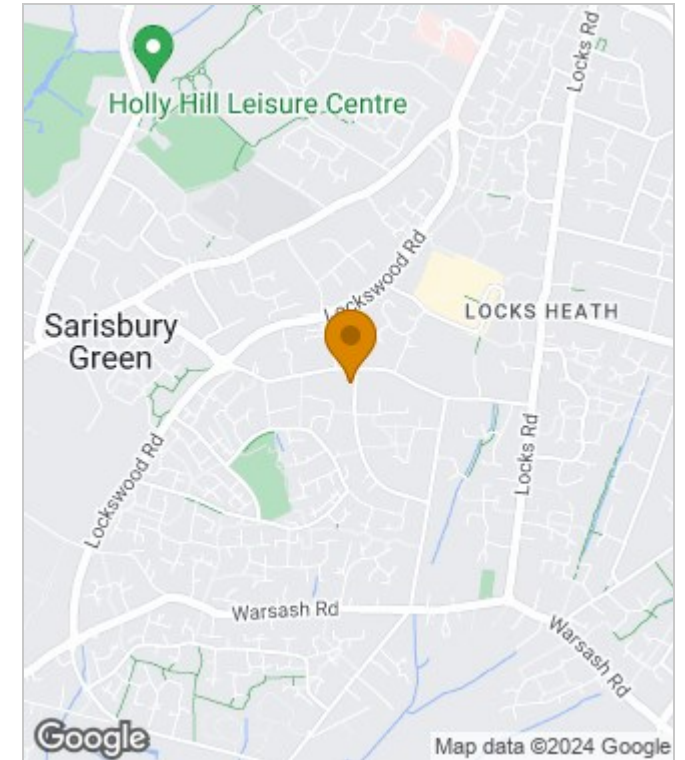
Council Tax Band: E



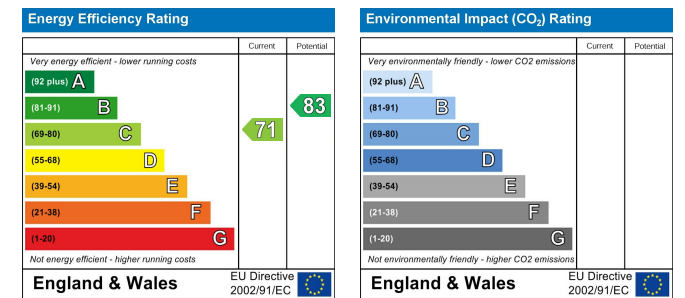
Floor Plans



Area Map



Energy Performance Graph



These particulars, whilst believed to be accurate are set out as a general outline only for guidance and do not constitute any part of an offer or contract. Intending purchasers should not rely on them as statements of representation of fact, but must satisfy themselves by inspection or otherwise as to their accuracy. No person in this firm's employment has the authority to make or give any representation or warranty in respect of the property.