



Chimneypots  
ESTATE AGENTS

YOUR HOME • OUR PASSION



Dene Close, Sarisbury Green, Southampton  
**Offers in excess of £500,000**





- A detached family home offering bright and spacious accommodation
  - Modern kitchen/breakfast room and utility room
  - Lounge with French doors out to the garden, separate dining room
  - Four well proportioned bedrooms, en-suite and family bathroom
    - Secluded rear garden, garage and driveway parking
- Within walking distance of local schools, Locks Heath shopping centre and Holly Hill
  - Internal viewing is highly recommended



This stunning 4-bedroom family home, offering 1323 square feet of beautifully designed accommodation, blends spacious living with modern comfort.

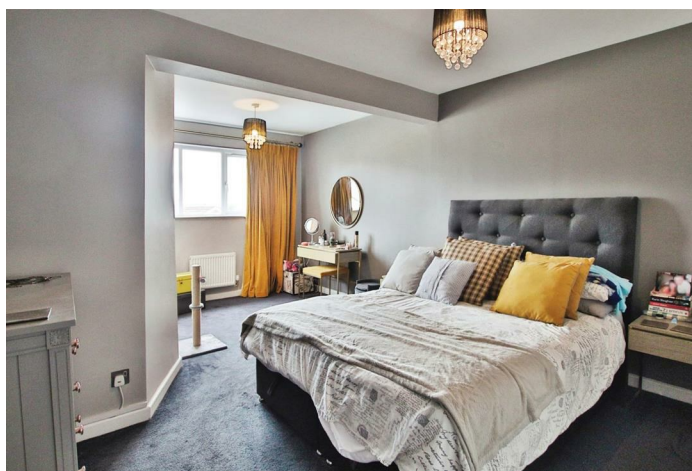
The ground floor extension features a sleek kitchen/breakfast room, leading to a well-maintained rear garden perfect for al fresco dining. The 21-foot dining room is ideal for large family gatherings, while the comfortable lounge offers a relaxing space for family and friends. The welcoming entrance hallway and practical utility room/cloakroom add convenience and style to the home.

The master bedroom includes an ensuite shower room and walk-in wardrobe. Three additional well-proportioned bedrooms, filled with natural light, are perfect for children, guests, or a home office. The family bathroom provides contemporary fixtures, creating a relaxing retreat.

Off-road parking and a garage provide ease and security, while the secure, private rear garden is perfect for children and outdoor activities. Proximity to highly regarded schools makes it ideal for families. Nearby Holly Hill Woodland Park and Swanwick Marina offer natural beauty and recreational opportunities.

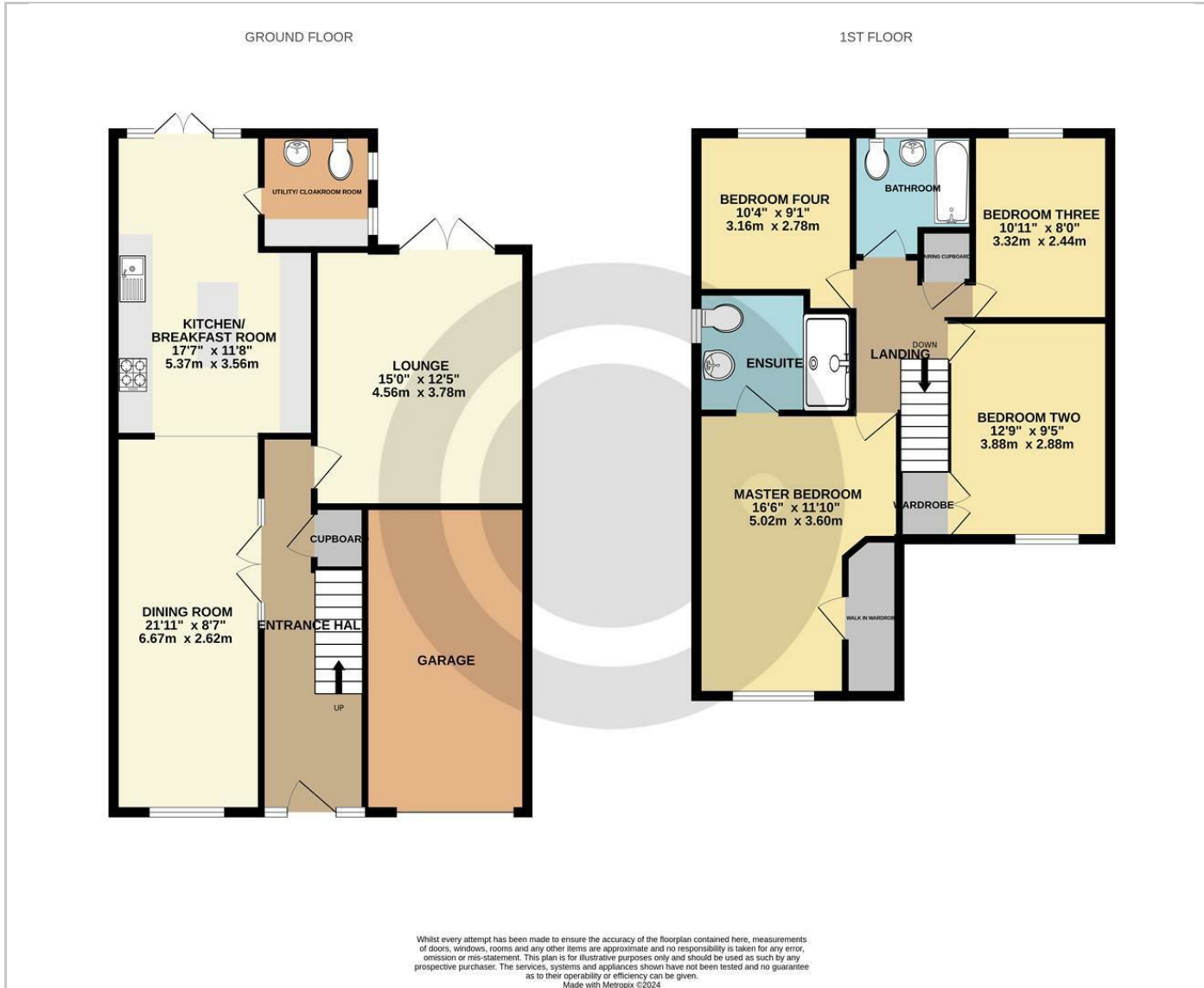
Internal viewing is highly recommended to appreciate the generous size and superior quality of this home, combining luxury, practicality, and comfort for modern family living.

Council Tax Band: E

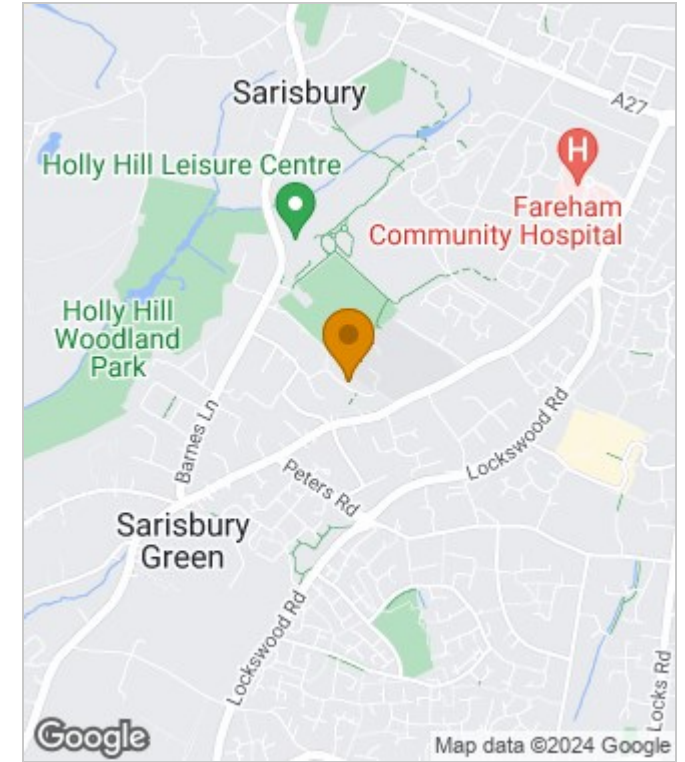




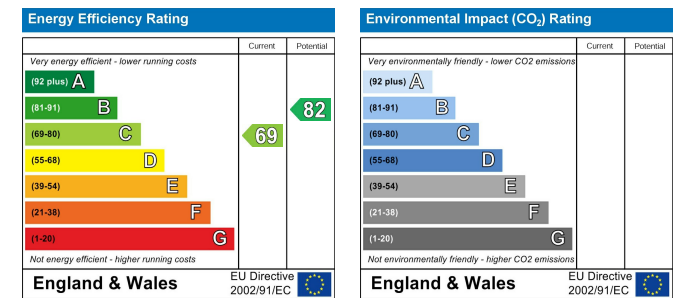
## Floor Plans



## Area Map



## Energy Performance Graph



These particulars, whilst believed to be accurate are set out as a general outline only for guidance and do not constitute any part of an offer or contract. Intending purchasers should not rely on them as statements of representation of fact, but must satisfy themselves by inspection or otherwise as to their accuracy. No person in this firm's employment has the authority to make or give any representation or warranty in respect of the property.