



Chimney Pots  
ESTATE AGENTS

YOUR HOME OUR PASSION



Mallards Road, Bursledon, Southampton



- Being Sold via Secure Sale online bidding. T's & C's apply
  - A beautifully presented semi-detached home
  - Lounge/ diner with French doors to the rear garden
    - Kitchen with delightful views over open fields
    - Three bedrooms, family bathroom and cloakroom
- Secluded rear garden further benefitting a sunny aspect and off road parking
  - Smart lighting appliances, video doorbell and camera and lights at rear.

Situated in the highly regarded residential area of Bursledon, this beautifully maintained semi-detached home offers bright and spacious accommodation.

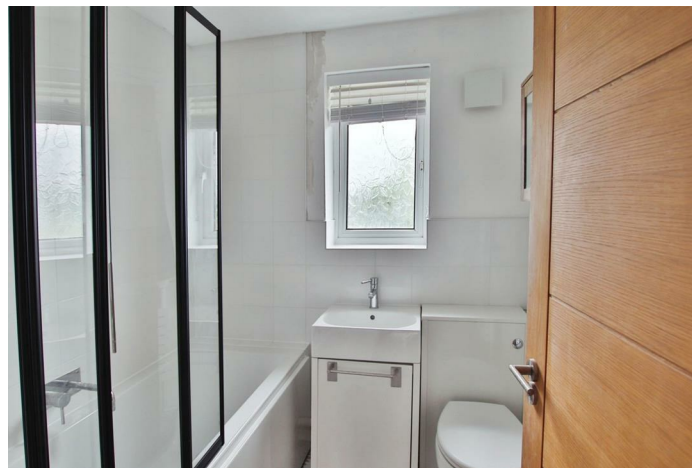
The layout includes a lounge/diner at the rear of the property with a door leading to a private garden. The front-facing kitchen offers delightful views over open fields. The ground floor also features a convenient cloakroom.

Upstairs, the home comprises two double bedrooms, a single bedroom, and a family bathroom. The front garden is complemented by a driveway that extends along the side of the property, providing off-road parking for several vehicles, including space for a camper van.

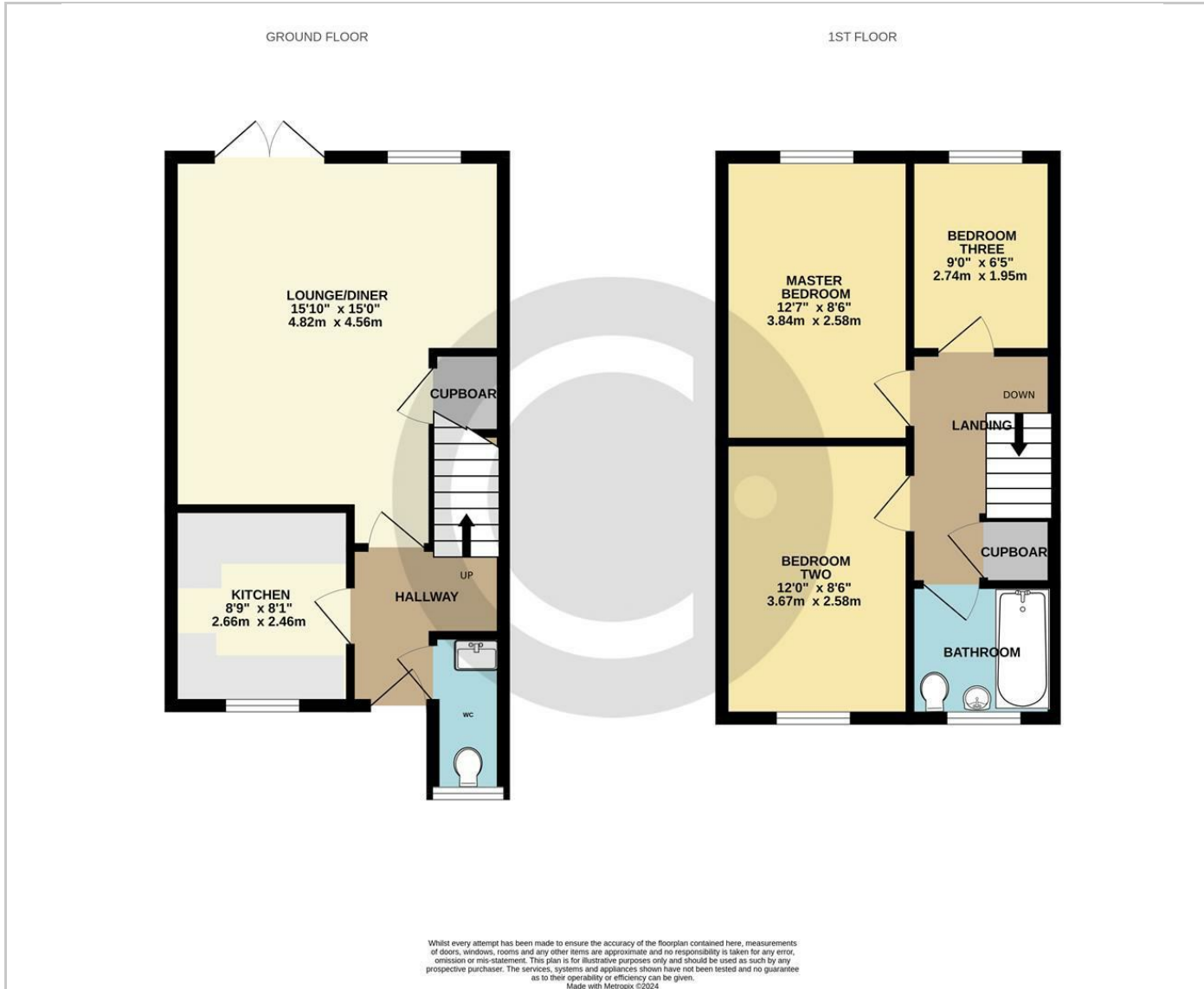
The property is equipped with double glazing and gas central heating.

Early viewing is highly recommended to appreciate all this home has to offer.

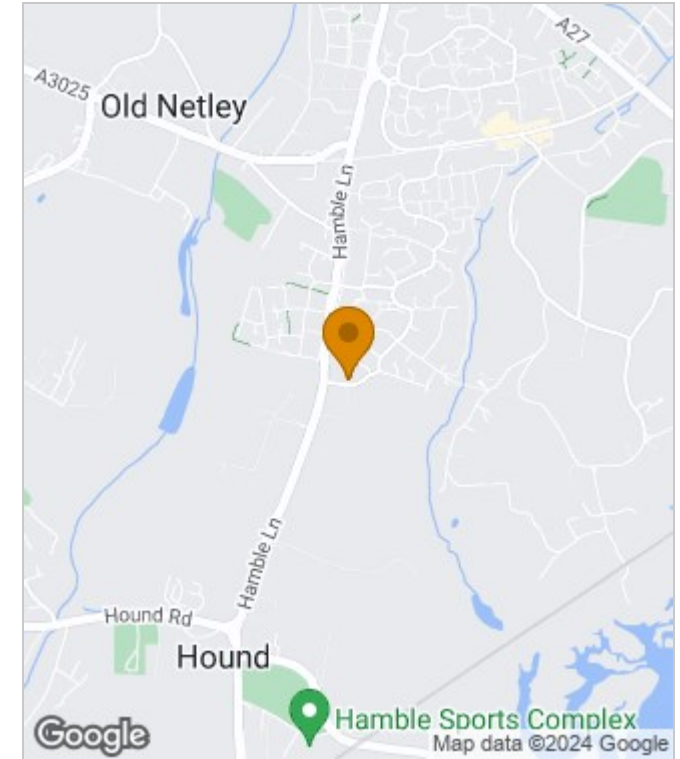
Council Tax Band: C



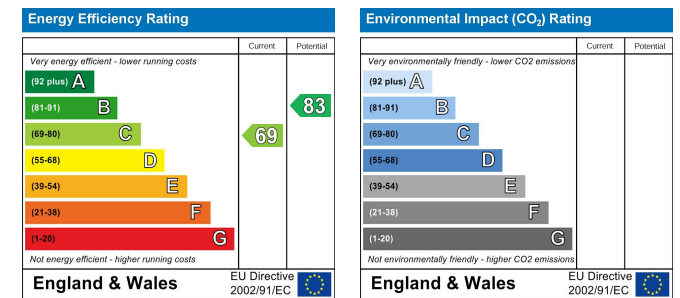
## Floor Plans



## Area Map



## Energy Performance Graph



These particulars, whilst believed to be accurate are set out as a general outline only for guidance and do not constitute any part of an offer or contract. Intending purchasers should not rely on them as statements of representation of fact, but must satisfy themselves by inspection or otherwise as to their accuracy. No person in this firm's employment has the authority to make or give any representation or warranty in respect of the property.