

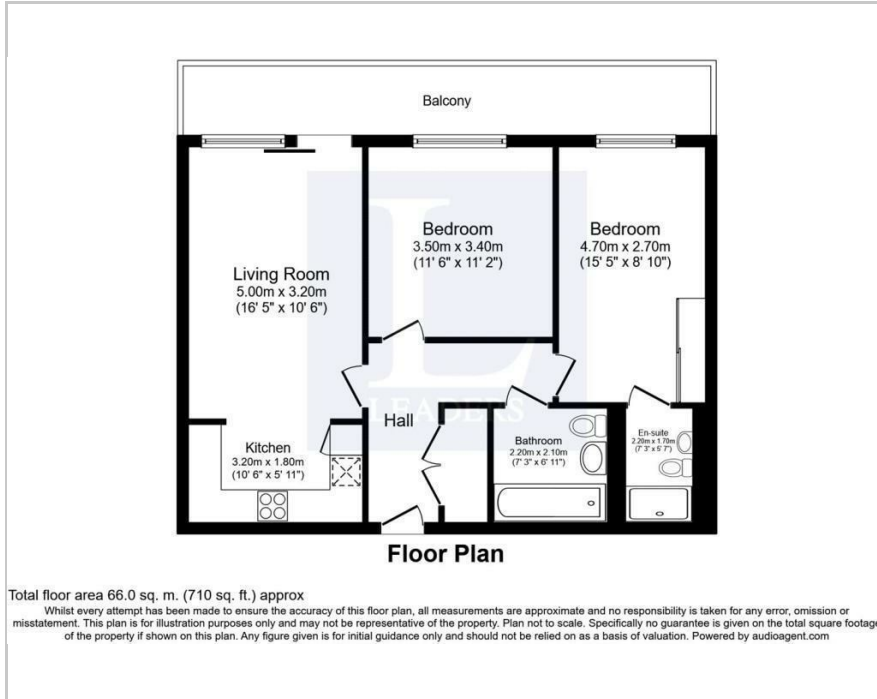


Flat 502 2 Maritime Walk, Southampton, SO14 3QS

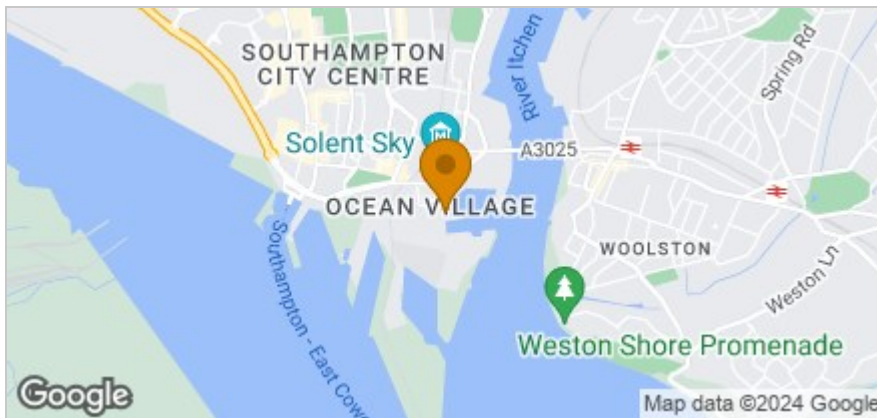
**£1,800 PCM**

2 2 1

## Floor Plan



## Area Map



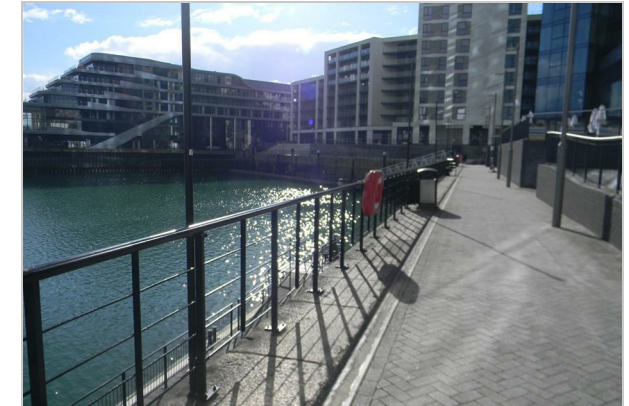
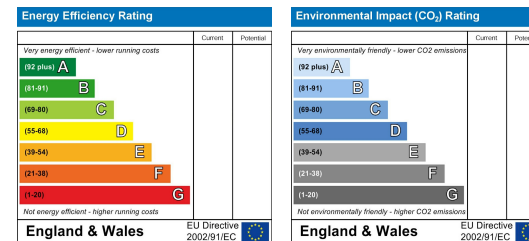
## Accommodation

- A RECENTLY REDECORATED APARTMENT
- TWO DOUBLE BEDROOMS
- MODERN FITTED KITCHEN WITH INTEGRATED APPLIANCES
- TWO BATHROOMS
- STUNNING MARINA VIEWS
- ALLOCATED PARKING
- EXCELLENT LOCATION

## Viewing

Please contact our Chimney Pots Estate Agents Office on 01489 584298 if you wish to arrange a viewing appointment for this property or require further information.

## Energy Efficiency Graph



These particulars, whilst believed to be accurate are set out as a general outline only for guidance and do not constitute any part of an offer or contract. Intending purchasers should not rely on them as statements of representation of fact, but must satisfy themselves by inspection or otherwise as to their accuracy. No person in this firm's employment has the authority to make or give any representation or warranty in respect of the property.