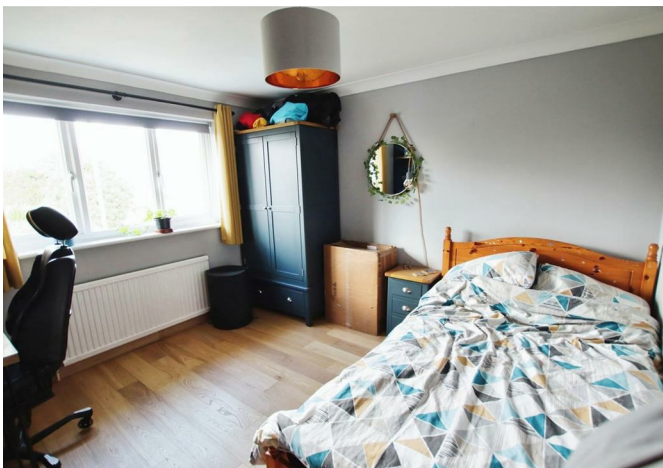




Burgundy Close, Locks Heath, SO31  
Offers over £325,000



- A nicely presented family home offering spacious accommodation and NO FORWARD CHAIN
  - Lounge/diner with a pleasant woodland outlook
  - Fitted kitchen overlooking the front aspect
  - Three bedrooms, family bathroom and large cloakroom/WC
- Southerly facing rear garden with a lovely decked area to relax in the coming summer months
  - Garage and driveway parking
- Within walking distance of the local schools and shops

This lovely family home is situated in a quiet cul-de-sac off Crescent Road where properties rarely come to the market and offers spacious well laid out accommodation. It is situated close to well-regarded schools of all ages, bus routes and shopping facilities.

The spacious accommodation includes a large entrance hall which provides access to the ground floor cloakroom, fitted kitchen and open plan lounge and dining room which extends across the rear and offers a lovely leafy outlook. The first floor provides three bedrooms with built-in wardrobes to the master and a family bathroom. There is plenty of storage on offer and the large windows throw in plenty of light making this a lovely home to live in.

Outside the rear garden benefits from having a Southerly aspect and the trees provide a good level of screening for privacy. There is a decked area adjoining the house with steps leading down to the faux lawn for ease of maintenance. To the front of the property is the driveway allowing parking for two/ three vehicles and access to the garage. driveway parking and front garden

