



Tanners Brook Close, Curbridge
£1,850 Per Calendar Month



- A brand new family home nestled away in a lovely leafy location
 - Lounge with pleasant outlook
 - Kitchen/ diner with appliances
- Three bedrooms, en-suite, family bathroom and cloakroom
 - Enclosed rear garden
 - Driveway for two vehicles
- Available now for a long term let

Situated on the popular Whiteley Meadows development in Curbridge is this new home which is available now and offered for a long term let. Nestled away in a secluded location looking onto a wooded area and open space. The property offers bright and spacious well laid out living accommodation which in brief comprises a lounge which benefits the pleasant outlook over the front of the property. Extending across the rear is the kitchen/ diner which benefits from appliances and an extensive range of wall and base level units. A cloakroom completes the accommodation on the ground floor.

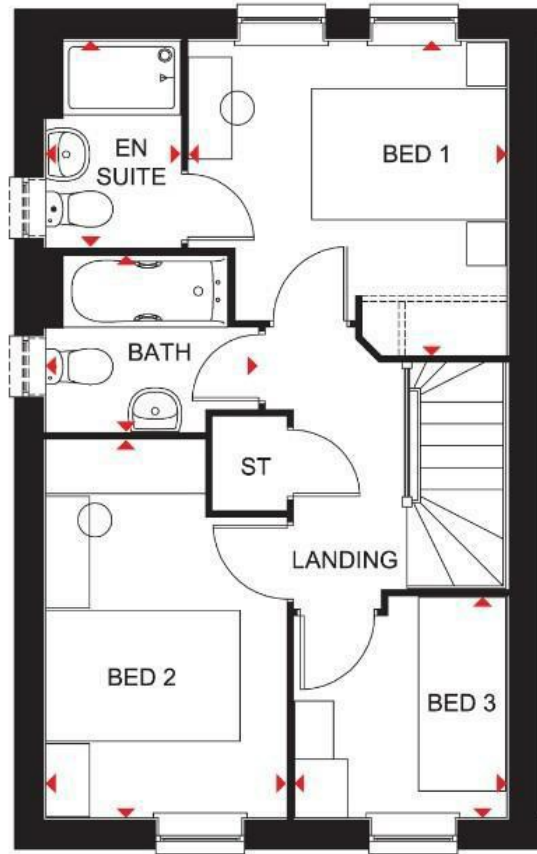
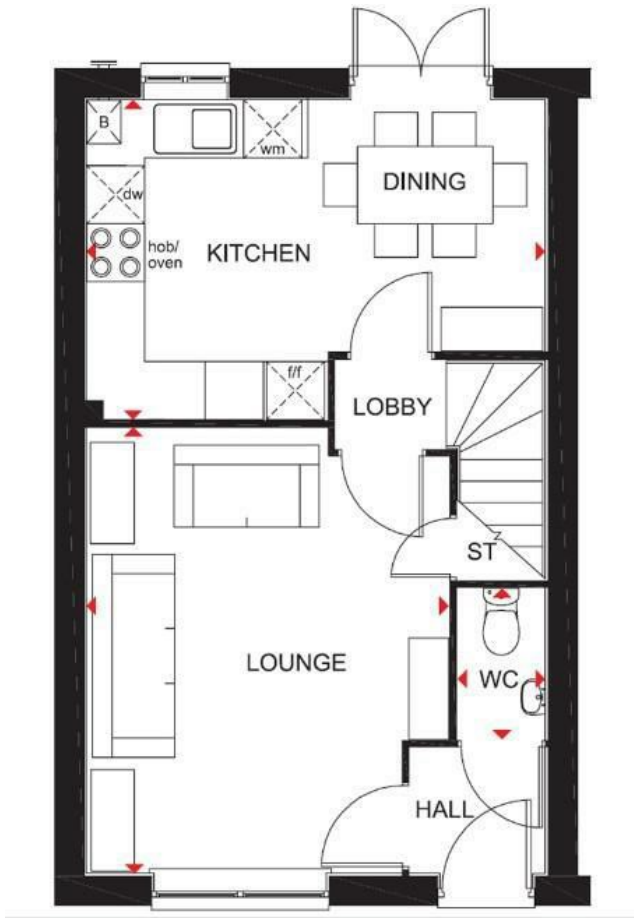
On the first floor the master bedroom has fitted wardrobes and ensuite shower room. There are two further bedrooms and modern family bathroom.

To the rear is an enclosed garden laid to lawn and a gate allowing access to the driveway which allows parking for two cars.

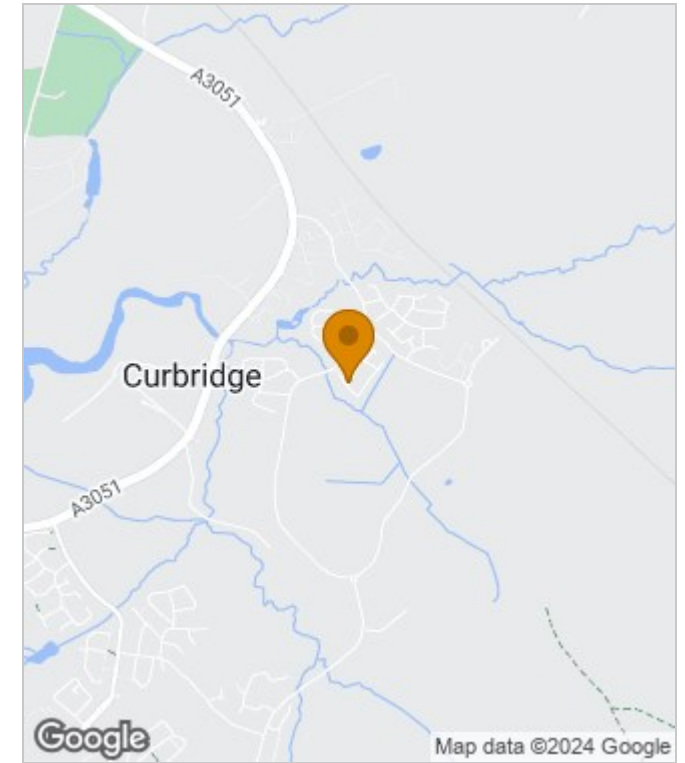
An early internal viewing comes highly recommended as we don't expect it to be available for long.



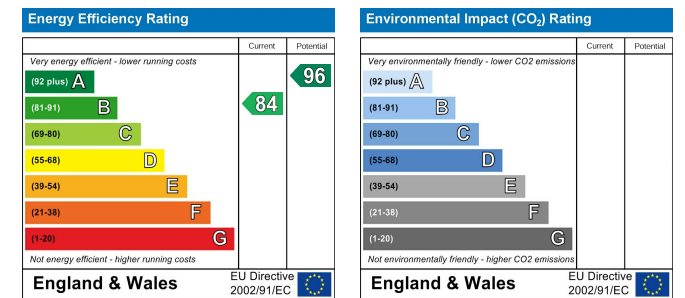
Floor Plans



Area Map



Energy Performance Graph



These particulars, whilst believed to be accurate are set out as a general outline only for guidance and do not constitute any part of an offer or contract. Intending purchasers should not rely on them as statements of representation of fact, but must satisfy themselves by inspection or otherwise as to their accuracy. No person in this firm's employment has the authority to make or give any representation or warranty in respect of the property.