



Drove Road, Sholing, SO19
£300,000



- A detached home offering bright and spacious accommodation which has been enhanced and beautifully maintained by the current owners
 - Lounge with feature bay window allowing plentiful light and a wood burning stove
 - Kitchen/ Diner extending across the rear with French doors to the rear garden
 - Two double bedrooms, ensuite cloakroom and ground floor bathroom
 - Off road parking for two vehicles
 - Situated in a desired road providing good transport links

A detached home situated in this popular residential location of Sholing providing easy access to the City centre which has been enhanced and beautifully maintained by the current owners offering bright and spacious well laid out accommodation which in brief comprises, a lounge with feature bay window overlooking the front of the property and featuring a wood burning stove.

Extending across the rear of the property is the kitchen/ diner which is fitted with a modern range of wall and base level units. French doors lead out to an enclosed rear garden which benefits a sunny aspect and provides a patio area adjacent to the rear of the property with an area of lawn beyond.

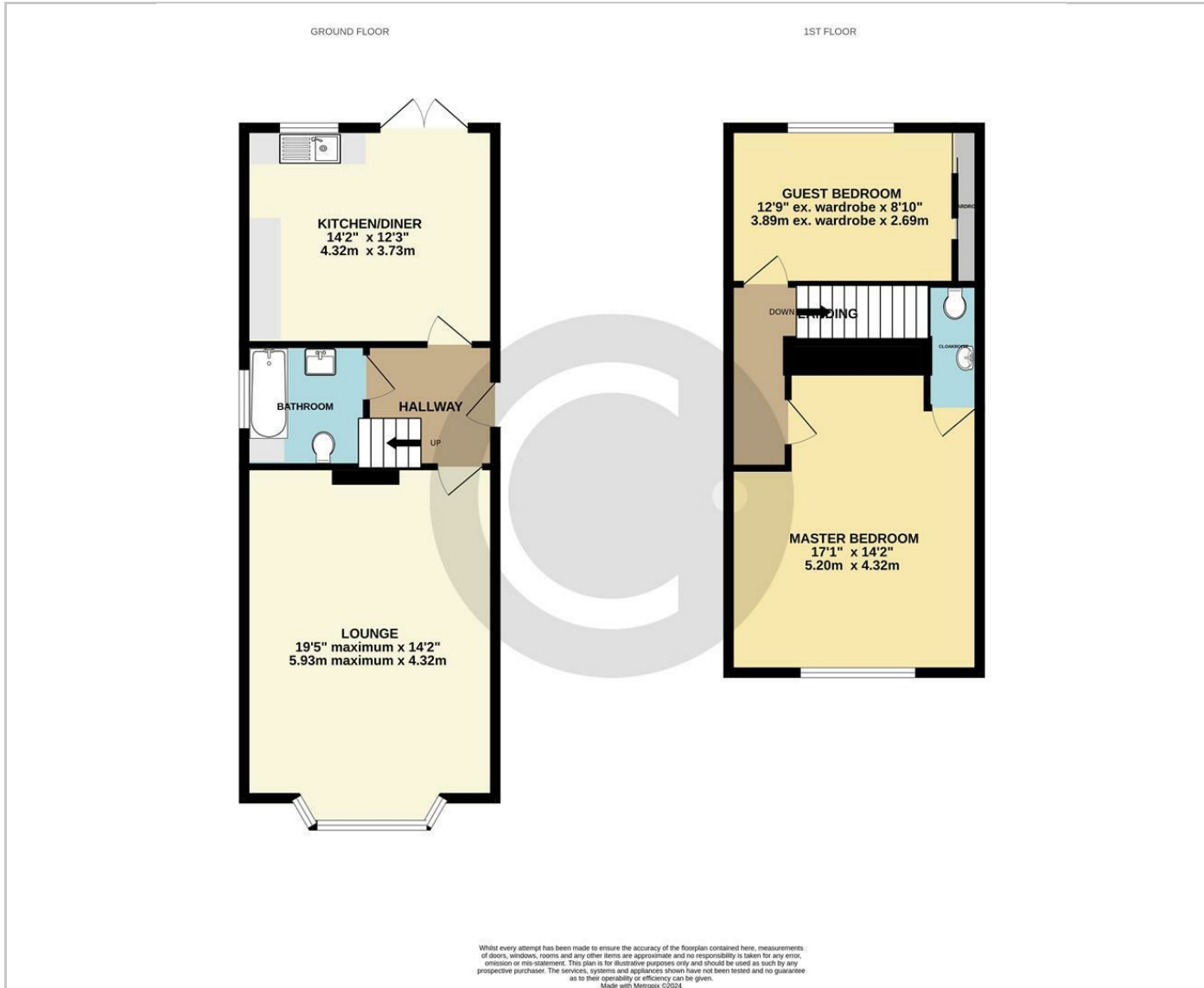
From the hallway, there is access to the bathroom which is fitted with a modern suite and stairs to the first floor where there are two double bedrooms, the master benefits from an ensuite cloakroom and the second bedroom fitted wardrobes.

The front provides off-road parking for two vehicles.

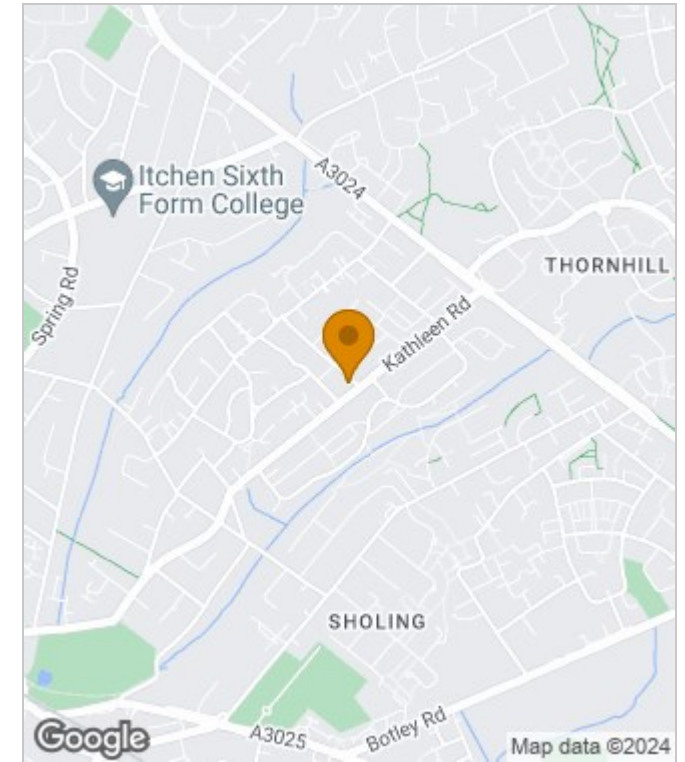
An internal viewing comes highly recommended.



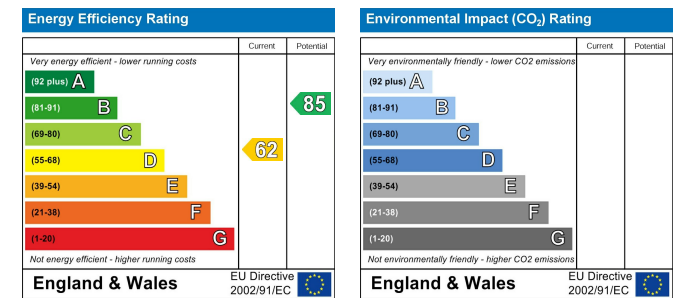
Floor Plans



Area Map



Energy Performance Graph



These particulars, whilst believed to be accurate are set out as a general outline only for guidance and do not constitute any part of an offer or contract. Intending purchasers should not rely on them as statements of representation of fact, but must satisfy themselves by inspection or otherwise as to their accuracy. No person in this firm's employment has the authority to make or give any representation or warranty in respect of the property.