



**Avon Way ,**  
Bidford on Avon, B50 4GP

Jeremy  
McGinn & Co 



## Available at Asking Price £250,000



A chance to acquire a modern semi-detached home, positioned within a quiet residential road in the popular village of Bidford on Avon.

Internally, the property is entered in to hallway with the Living Room off the left hand side. The Kitchen Dining Room is across the rear of the property with the fitted kitchen benefitting from a range of wall and base units and integrated appliances, with patio doors then leading out to the rear garden. The ground floor also benefits from a ground floor WC and a useful storage / pantry cupboard. To the first floor, there are two good sized double bedrooms and a family bathroom.

Outside, the rear garden is mainly laid to lawn with a patio area and a side gate giving out to the front driveway, where there is off road parking for 2 cars.







**Tax Band: B**

**Council: Stratford on Avon District Council**

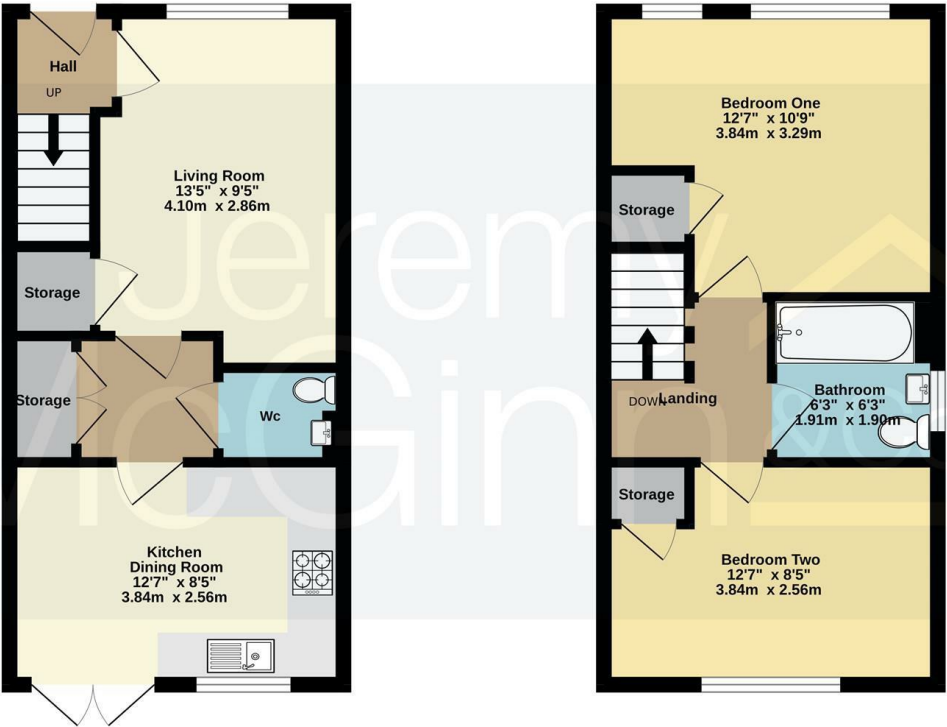
**Tenure: Freehold**

Bidford on Avon comprises a popular riverside village situated a few miles downstream from Stratford upon Avon and boasts a rich history with many characterful properties and a fine range of local amenities including shops, cafés, pubs and restaurants in addition to a supermarket and new medical centre.

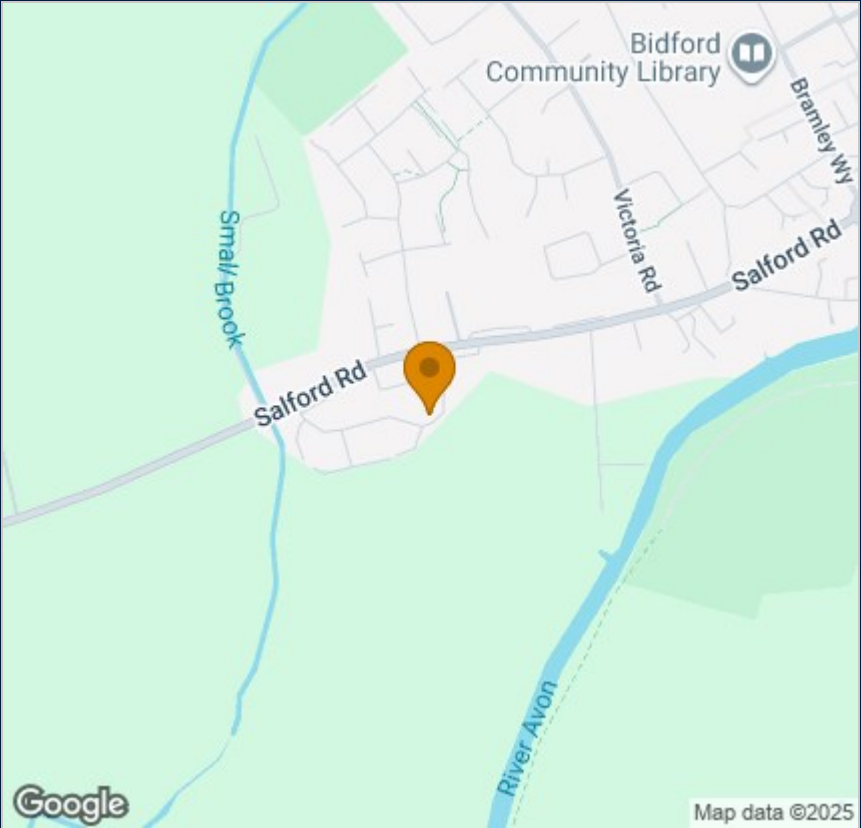
Bidford's proximity to Stratford upon Avon & Alcester to which there are regular public transport services makes this a convenient place to live with so many country & riverside walks right on the doorstep.



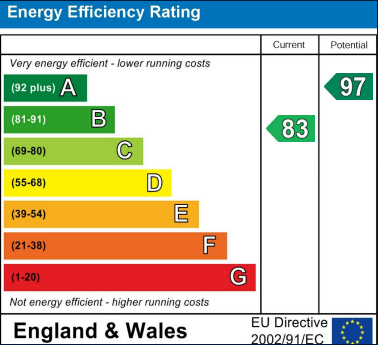
# Floor Plan



# Map



# Energy Performance



Jeremy McGinn & Co

55 Ely Street, Stratford Upon Avon, Warwickshire, CV37 6LN  
Tel: 01789 868168 Email: stratford@jeremymcginns.com  
www.jeremymcginns.com