



Russet Way ,
Bidford on Avon, B50 4QN

Jeremy
McGinn & Co 

Available at Offers Over £230,000



A modern end of terrace property situated in Bidford on Avon offering well appointed living space benefiting from gas central heating and uPVC double glazing.

On the ground floor there is a Vestibule Area with Utility Cupboard, Guest Cloaks/WC, Open Plan Kitchen/Living room including integrated oven, hob, extractor & fridge/freezer.

On the first floor there is a full width Master Bedroom, Central Bathroom with white suite including shower & fitted screen over the bath and Guest Bedroom with fitted wardrobe.

There is a parking space to the front of the property with gated side access leading to an enclosed garden to the rear.

No upward chain.





Tax Band: B

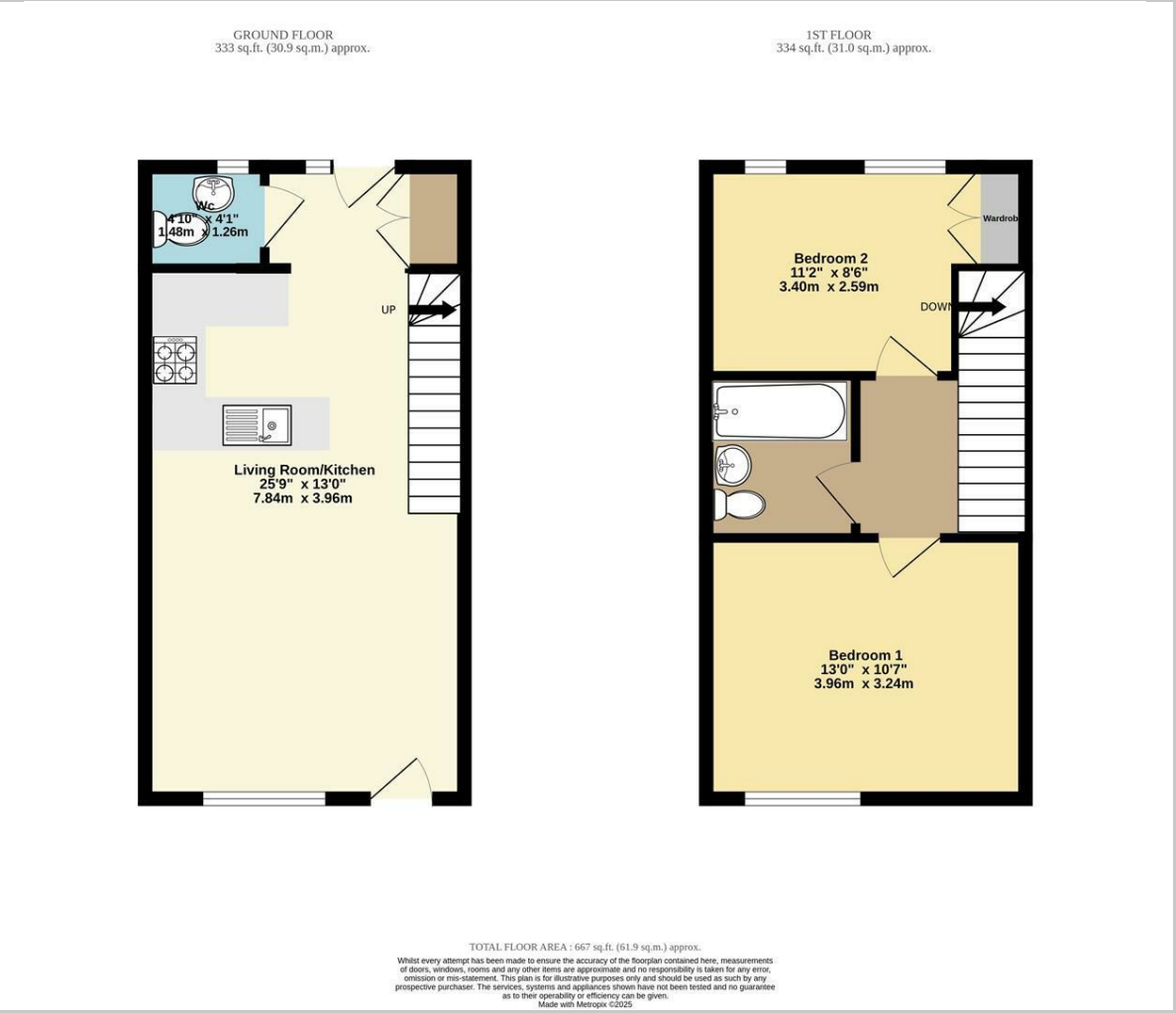
Council: Stratford upon Avon

Tenure: Freehold

Bidford on Avon comprises a popular riverside village situated a few miles downstream from Stratford upon Avon and boasts a rich history with many characterful properties and a fine range of local amenities including shops, cafés, pubs and restaurants in addition to a supermarket and new medical centre.

Bidford's proximity to Stratford upon Avon & Alcester to which there are regular public transport services makes this a convenient place to live with so many country & riverside walks right on the doorstep.

Floor Plan



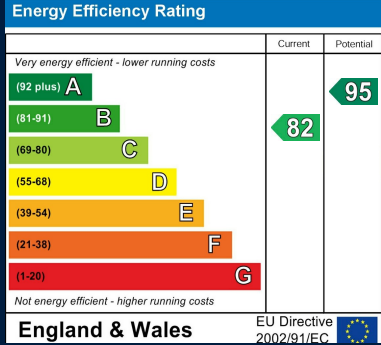
These particulars, whilst believed to be accurate are set out as a general outline only for guidance and do not constitute any part of an offer or contract. Intending purchasers should not rely on them as statements of representation of fact, but must satisfy themselves by inspection or otherwise as to their accuracy. No person in this firms employment has the authority to make or give any representation or warranty in respect of the property.

55 Ely Street, Stratford Upon Avon, Warwickshire, CV37 6LN
Tel: 01789 868168 Email: stratford@jeremymcginns.com
www.jeremymcginns.com

Map



Energy Performance



Jeremy McGinn & Co