



Loxley Road ,
Stratford-upon-Avon, CV37 7DP

Jeremy
McGinn & Co

Asking Price £595,000



A chance to acquire a delightful semi-detached family home, located on one of Stratford's most popular residential roads, within easy walking distance of the town centre.

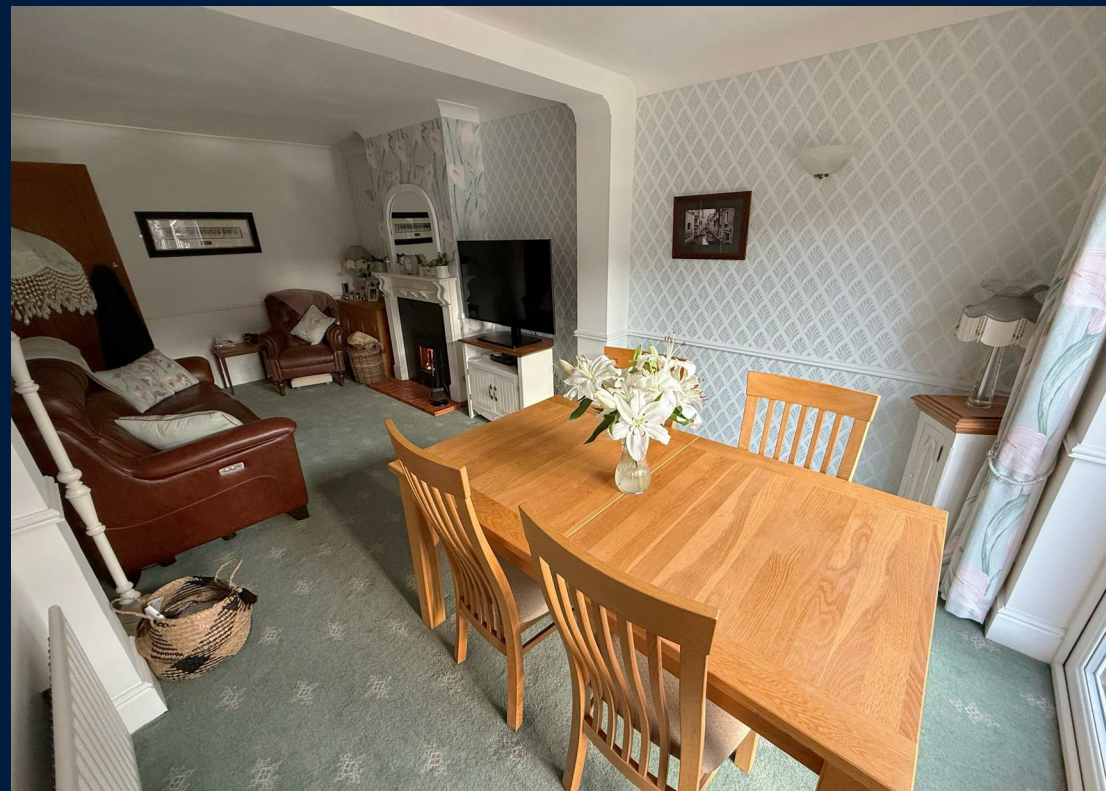
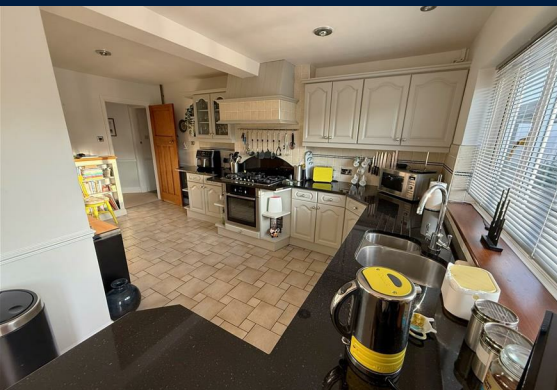
The property sits back behind a gravelled driveway, offering parking for 3-4 cars and is entered via porch into an entrance hall. The front sitting room has a characterful bay window and feature fireplace. The rear of the property has been extended to the ground floor, to offer a sizeable Living / Dining Room and a fabulous Kitchen Breakfast Room, with separate Utility & WC.

To the first floor, there are two double bedrooms (both complete with fitted wardrobes), single bedroom and four-piece family bathroom.

Outside, the property occupies a generous plot; with a delightful rear garden comprising a large patio area, spacious lawn, planted borders and a timber home office, complete with light and power, ideal for those who work from home.

The property also benefits from a single garage.



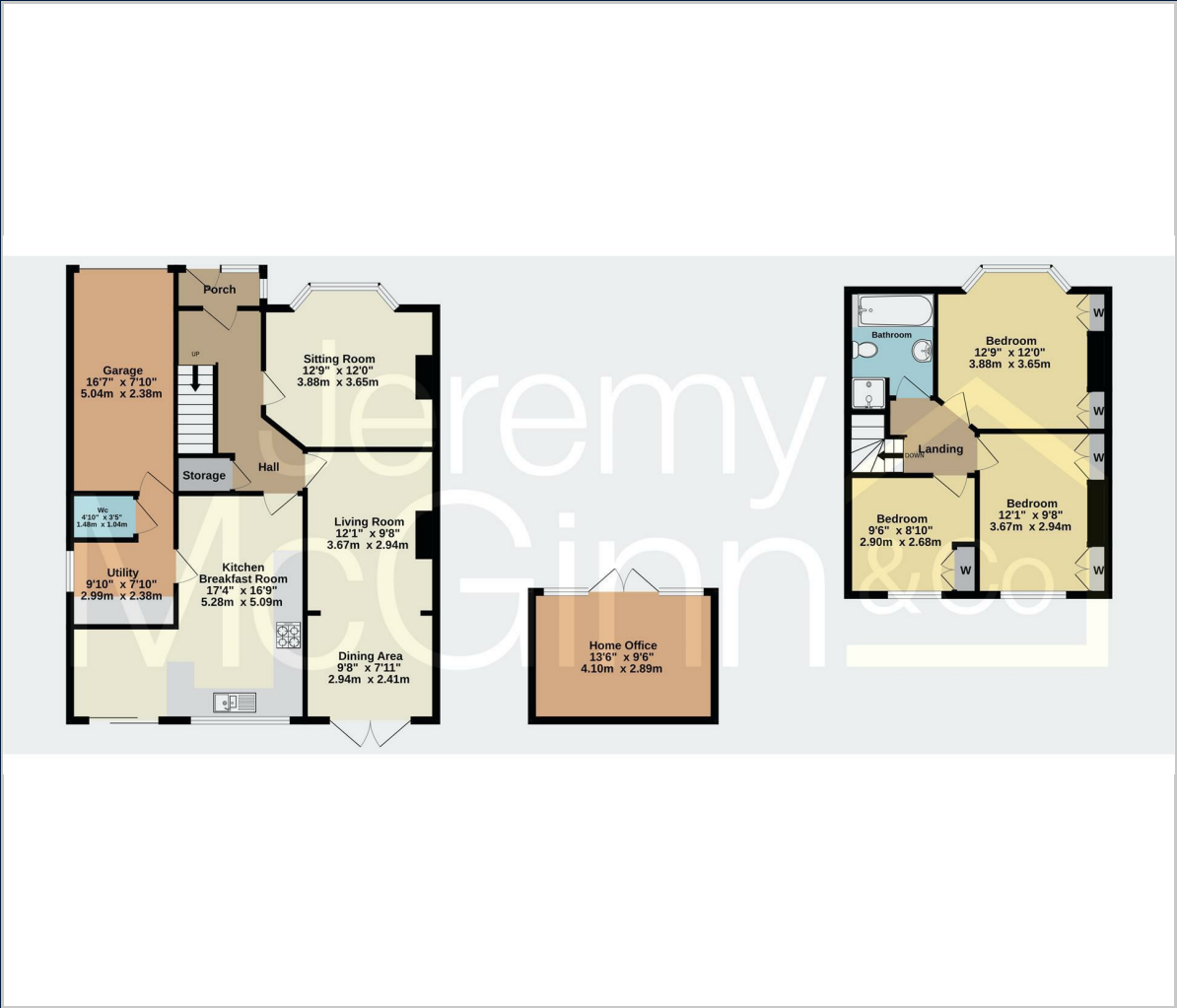


Tax Band:

Council: Stratford District Council

Tenure: Freehold

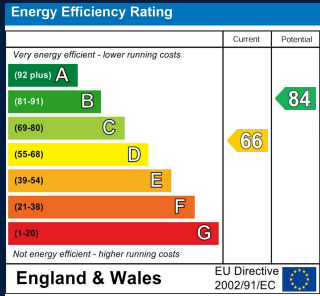
Floor Plan



Map



Energy Performance



These particulars, whilst believed to be accurate are set out as a general outline only for guidance and do not constitute any part of an offer or contract. Intending purchasers should not rely on them as statements of representation of fact, but must satisfy themselves by inspection or otherwise as to their accuracy. No person in this firms employment has the authority to make or give any representation or warranty in respect of the property.

55 Ely Street, Stratford Upon Avon, Warwickshire, CV37 6LN
Tel: 01789 868168 Email: stratford@jeremymcginns.com www.jeremymcginns.com