



Lillington Road,
Leamington Spa, CV32 5PU

Jeremy
McGinn & Co 

Offers Over £300,000



Superbly located within easy reach of the Town Centre this property is ideally located for easy access to a wealth of shops, Cafés, restaurants and recreational amenities.

The property comprises a spacious apartment situated on the first floor of a highly regarded purpose built development sat back from the road with an allocated parking space together with visitor parking. Access to the building is via a well maintained communal hall with entry phone system leading to accommodation benefiting from central heating and double glazing and comprising - Reception Hall with excellent storage, Generous Living/Dining Room, Fitted Kitchen with integrated appliances, Master Bedroom with built in wardrobe & Ensuite, Guest Bedroom with built in wardrobe & access to main Bathroom via a Jack & Jill arrangement and Bedroom 3/Study.





Tax Band: D

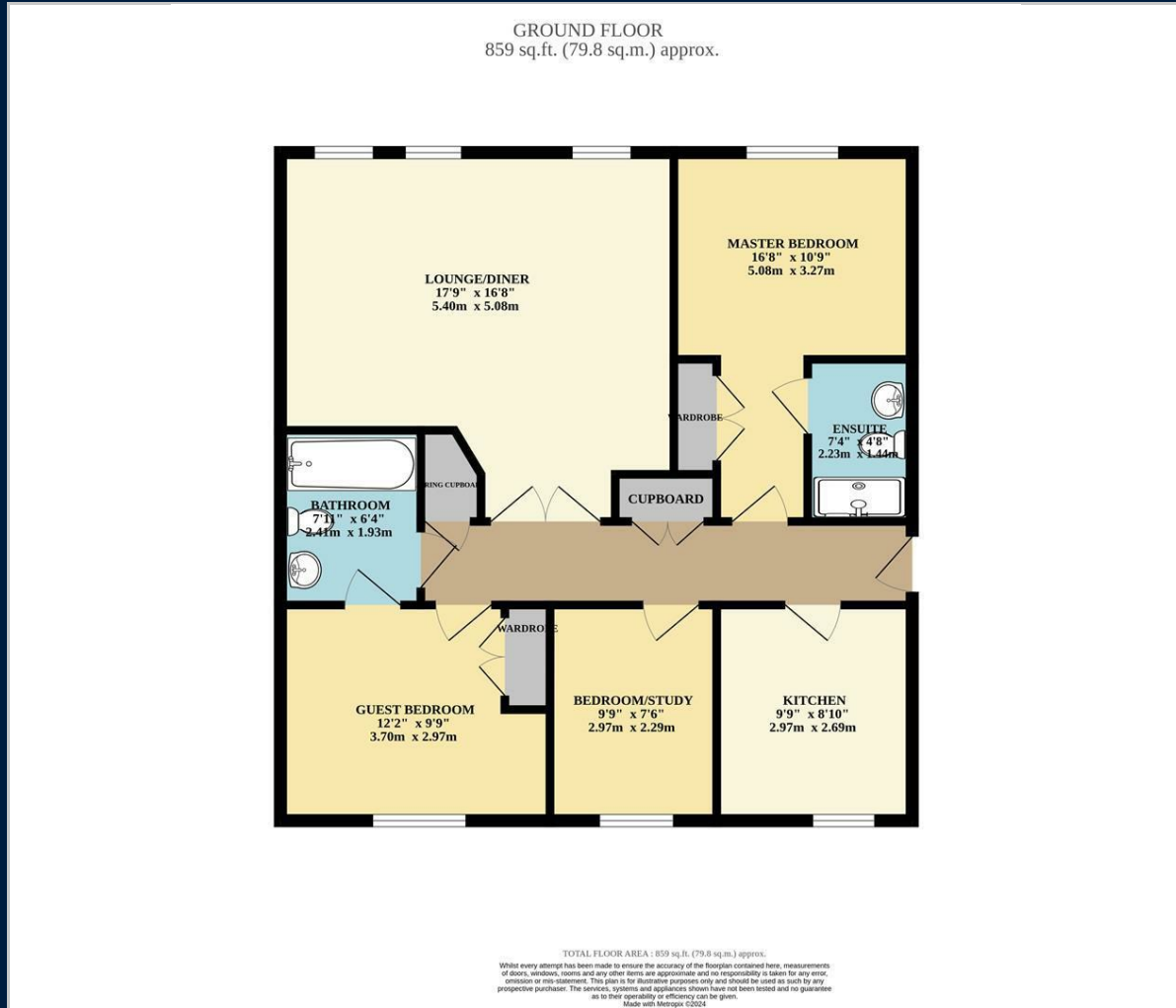
Council: Warwick District Council

Tenure: Leasehold

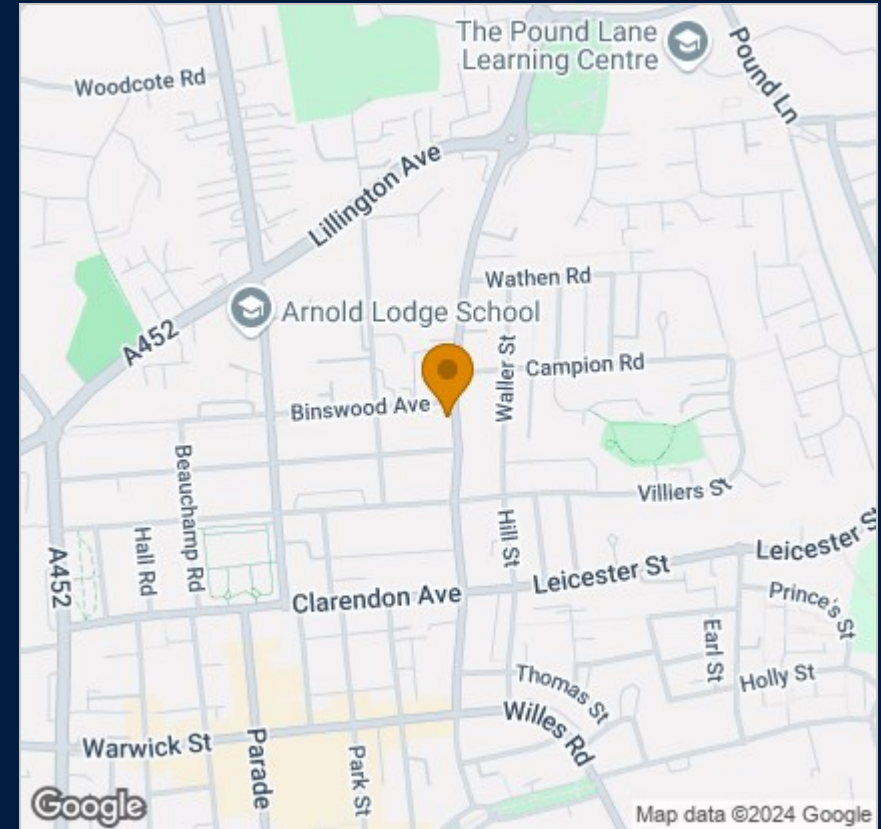
Royal Leamington Spa has been firmly established as a highly desirable place to live boasting a huge range of shops, cafés and restaurants in addition to numerous sporting and recreational facilities.

Leamington is a great place from which to commute with direct rail services to both Birmingham and London and easy access to Birmingham International Airport.

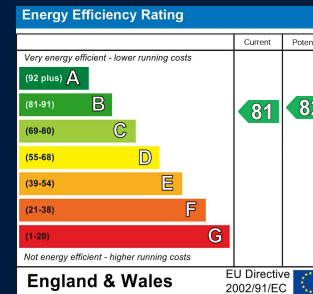
Floor Plan



Map



Energy Performance



These particulars, whilst believed to be accurate are set out as a general outline only for guidance and do not constitute any part of an offer or contract. Intending purchasers should not rely on them as statements of representation of fact, but must satisfy themselves by inspection or otherwise as to their accuracy. No person in this firm's employment has the authority to make or give any representation or warranty in respect of the property.

55 Ely Street, Stratford Upon Avon, Warwickshire, CV37 6LN
Tel: 01789 868168 Email: stratford@jeremymcginns.com www.jeremymcginns.com