



Sandringham Avenue ,
Stratford-upon-Avon, CV37 0SW

Jeremy
McGinn & Co 

Asking Price £200,000



A chance to acquire a delightful, modern GROUND FLOOR maisonette, located on the edge of a popular development overlooking an open green.

The property is was built around 4 years ago and is entered through its own front door into an entrance lobby, opening up on to a spacious Living Room with double patio doors and an archway to a fitted Kitchen with a full range of integrated appliances including oven, hob, washing machine, dishwasher and fridge freezer. The bedroom is a very spacious, dual aspect double with a fitted wardrobe and the family bathroom offers a shower over bath, sink & WC. There is also two useful storage cupboards, located off the inner hallway.

The property benefits from it's own PRIVATE GARDEN, offering the owner a fabulous outside space to enjoy. There is an allocated parking space with the property.



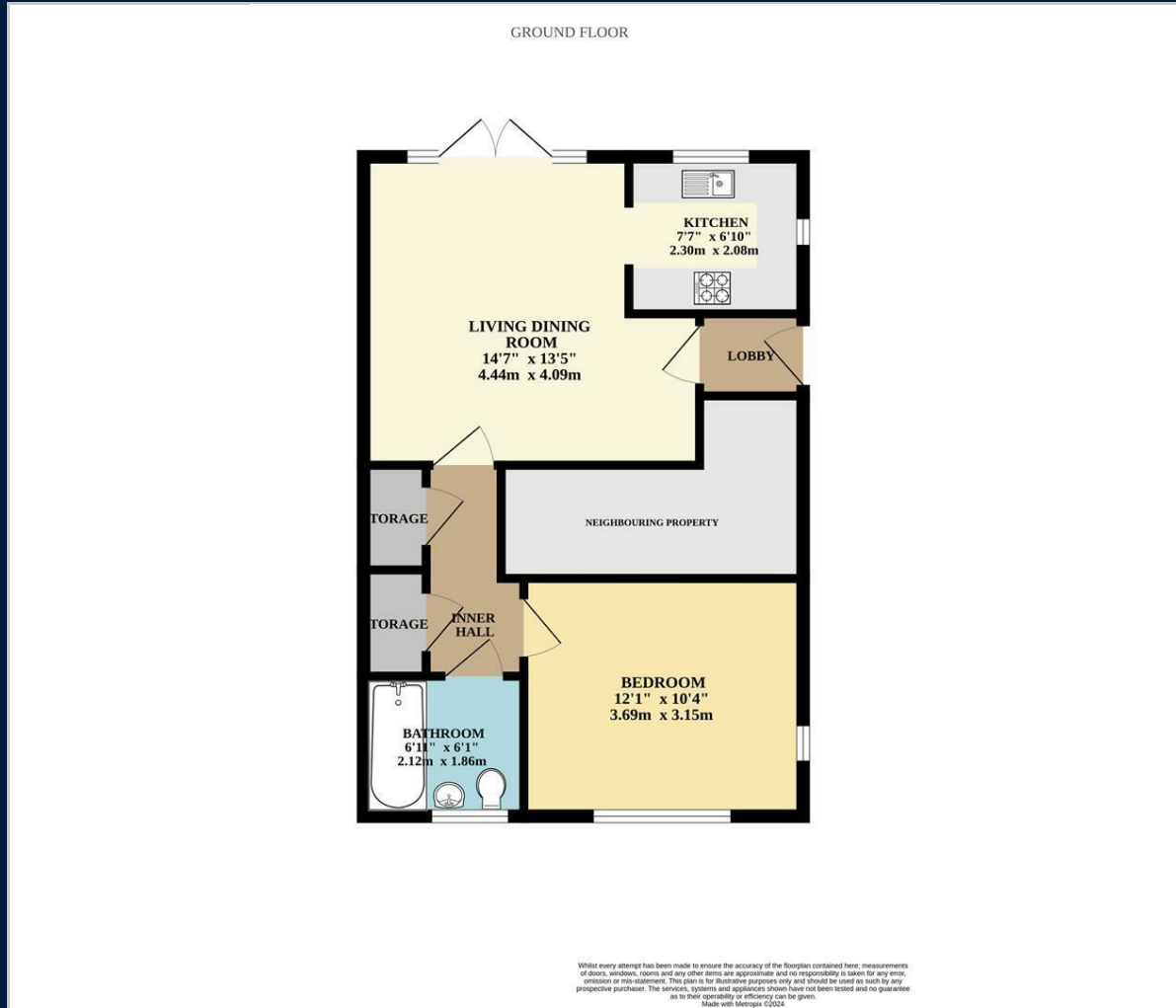


Tax Band: B

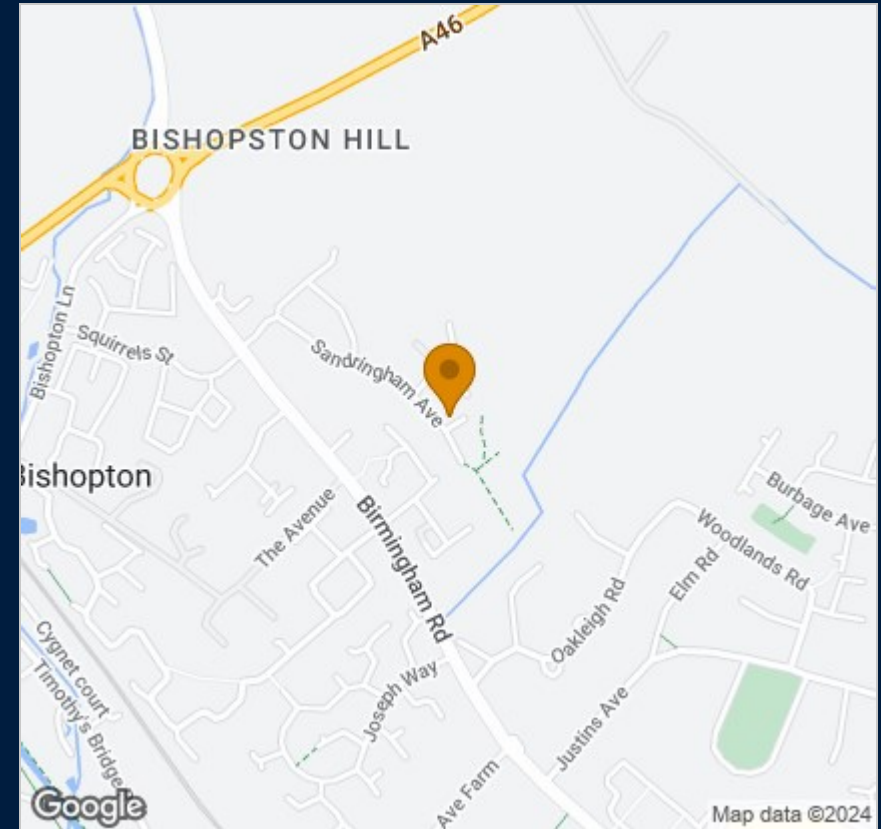
Council: Stratford District Council

Tenure: Leasehold

Floor Plan



Map



Energy Performance

Energy Efficiency Rating		Current	Potential
Very energy efficient - lower running costs			
(92 plus) A			
(81-91) B		83	83
(69-80) C			
(55-68) D			
(39-54) E			
(21-38) F			
(1-20) G			
Not energy efficient - higher running costs			
England & Wales		EU Directive 2002/91/EC	



These particulars, whilst believed to be accurate are set out as a general outline only for guidance and do not constitute any part of an offer or contract. Intending purchasers should not rely on them as statements of representation of fact, but must satisfy themselves by inspection or otherwise as to their accuracy. No person in this firm's employment has the authority to make or give any representation or warranty in respect of the property.

55 Ely Street, Stratford Upon Avon, Warwickshire, CV37 6LN
 Tel: 01789 868168 Email: stratford@jeremymcginns.com www.jeremymcginns.com