



**Grafton Lane ,**  
Bidford on Avon, B50 4DX

Jeremy  
McGinn & Co 

# Offers Over £220,000



A deceptively spacious mid terraced dormer style house set on the edge of the popular village of Bidford on Avon offering really generous living space benefiting from gas central heating and double glazing - Reception Hall, Living Room, Dining Kitchen, Utility/Cloaks/WC, Landing, 2 Good Sized Double Bedrooms and Bathroom including bath and separate shower enclosure. To the rear of the property there is a private enclosed garden.





**Tax Band: B**

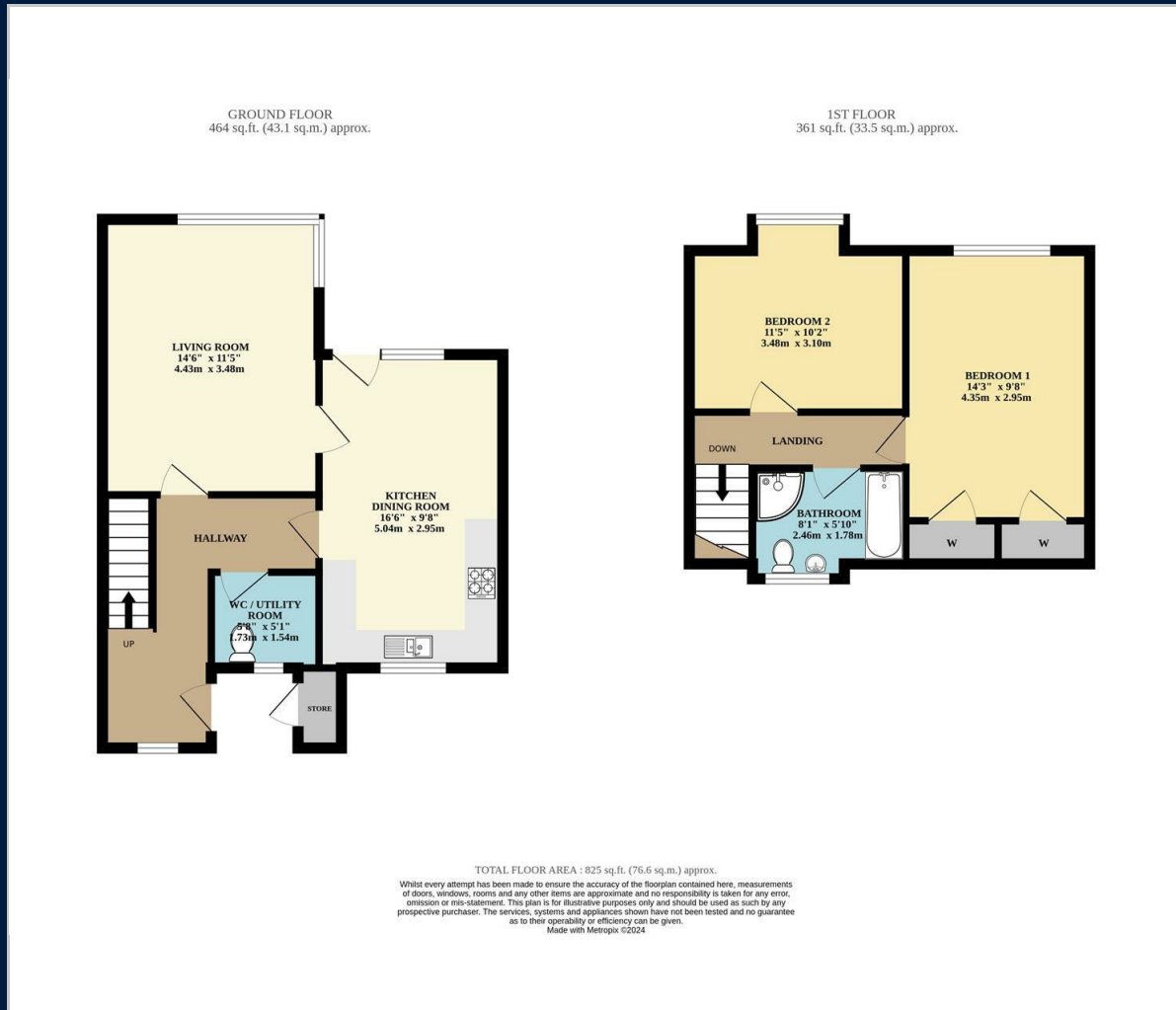
**Council: Stratford upon Avon District Council**

**Tenure: Freehold**

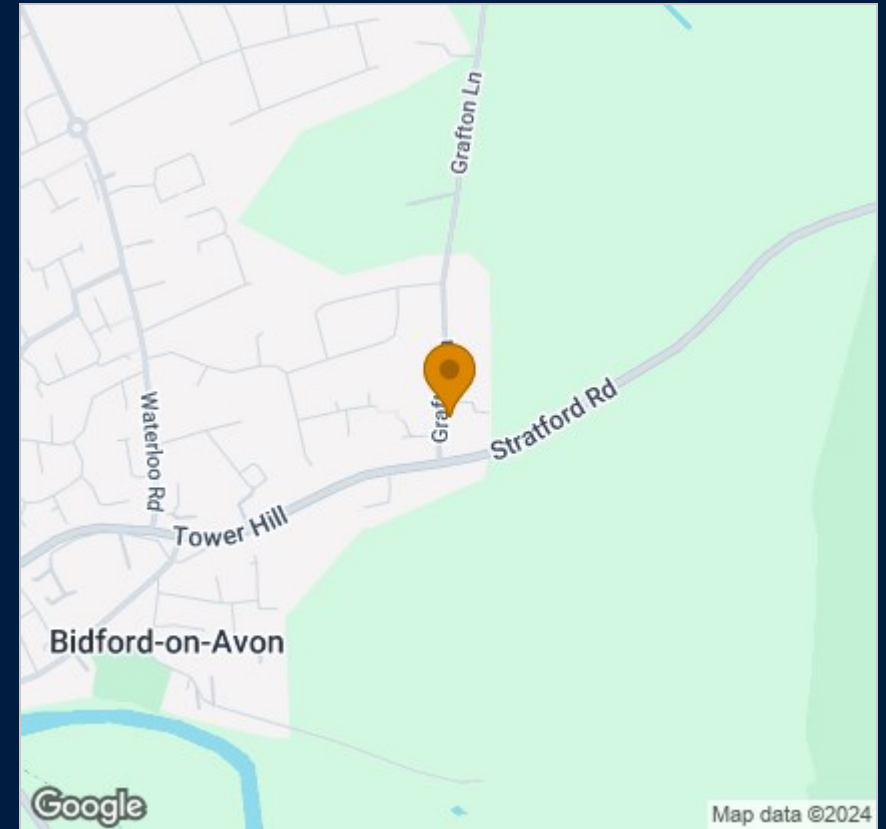
Bidford on Avon comprises a popular riverside village situated a few miles downstream from Stratford upon Avon and boasts a rich history with many characterful properties and a fine range of local amenities including shops, cafés, pubs and restaurants in addition to a supermarket and new medical centre.

Bidford's proximity to Stratford upon Avon & Alcester to which there are regular public transport services makes this a convenient place to live with so many country & riverside walks right on the doorstep.

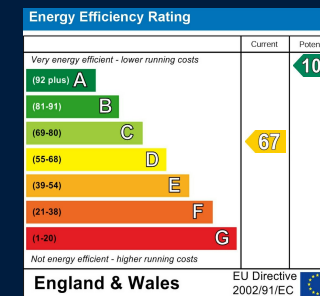
# Floor Plan



# Map



# Energy Performance



These particulars, whilst believed to be accurate are set out as a general outline only for guidance and do not constitute any part of an offer or contract. Intending purchasers should not rely on them as statements of representation of fact, but must satisfy themselves by inspection or otherwise as to their accuracy. No person in this firms employment has the authority to make or give any representation or warranty in respect of the property.

55 Ely Street, Stratford Upon Avon, Warwickshire, CV37 6LN  
 Tel: 01789 868168 Email: stratford@jeremymcginns.com www.jeremymcginns.com