



Huxley Court ,
Stratford-upon-Avon, CV37 0BG

Jeremy
McGinn & Co 

Offers Over £180,000



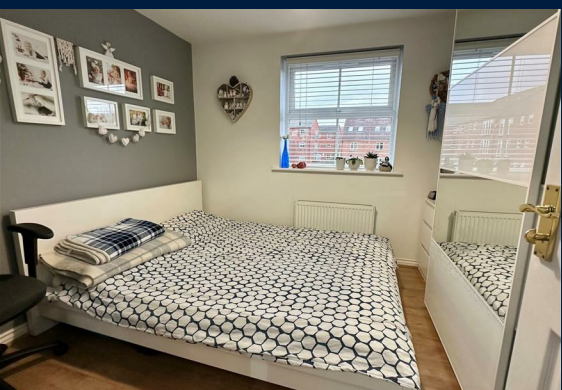
A chance to acquire a two double bedroom first floor apartment, conveniently situated close to the Maybird shopping centre and within easy walking distance of local train stations, schools and Stratford upon Avon town centre itself.

The internal accommodation comprises; Communal Entrance Hallway, Personal Inner Hallway with Storage Cupboard, Living Dining Room with Juliet Balcony to front and archway leading to a Fitted Kitchen, Two Double Bedrooms with the Master benefitting from an En Suite Shower Room and a further Family Bathroom.

Outside, the property benefits from an allocated parking space, with further visitor spaces available.

We understand the property to be Leasehold, with approx.108 years unexpired on the lease. There is a Service Charge of £1300 per annum and a Ground Rent of £250 per annum. This information should always be confirmed by your solicitor prior to exchange of contracts.



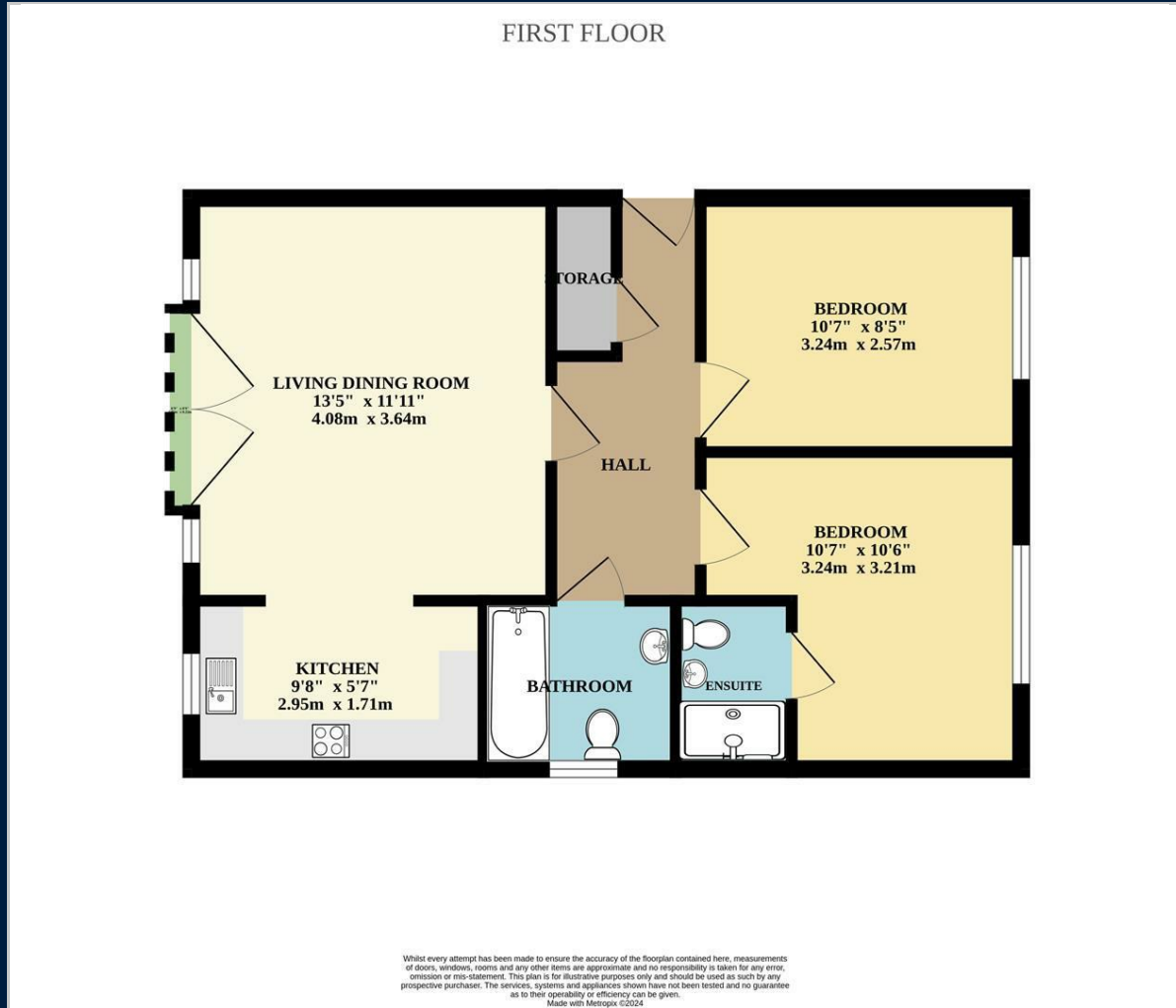


Tax Band: C

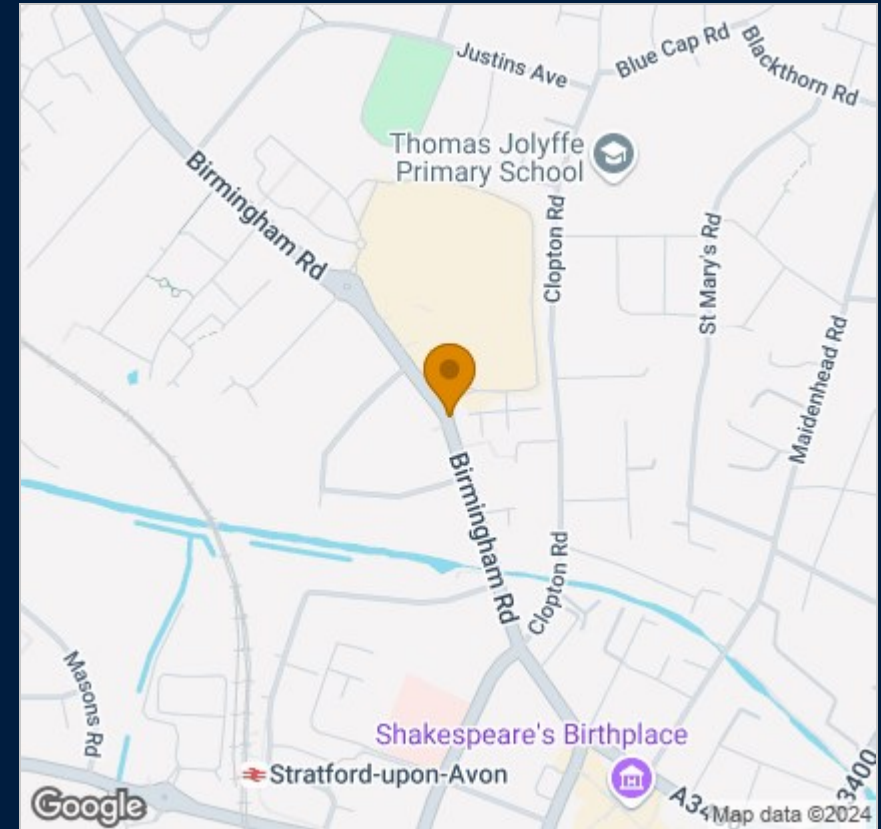
Council: Stratford District Council

Tenure: Leasehold

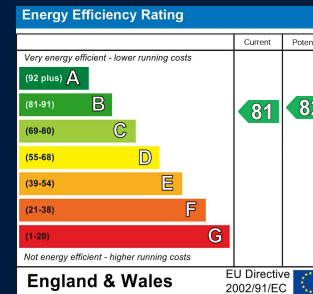
Floor Plan



Map



Energy Performance



These particulars, whilst believed to be accurate are set out as a general outline only for guidance and do not constitute any part of an offer or contract. Intending purchasers should not rely on them as statements of representation of fact, but must satisfy themselves by inspection or otherwise as to their accuracy. No person in this firm's employment has the authority to make or give any representation or warranty in respect of the property.

55 Ely Street, Stratford Upon Avon, Warwickshire, CV37 6LN
 Tel: 01789 868168 Email: stratford@jeremymcginns.com www.jeremymcginns.com