



**Holland Meadow , Welford on Avon**  
Stratford-upon-Avon, CV37 8JD



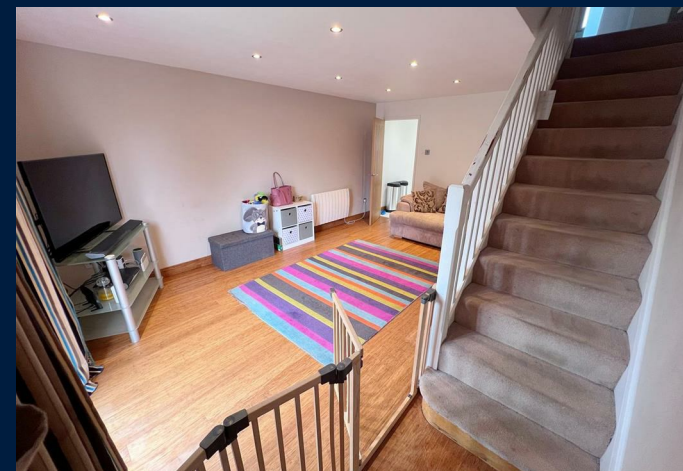
# Fixed Asking Price £148,400



A rare chance to acquire a 56% Shared-Ownership home, in the sought after village of Welford on Avon. This delightful end-terrace home is situated in a quiet cul de sac and offers a great opportunity to a first time buyer or local person.

Internally, the accommodation is arranged over two floors and briefly comprises; refitted Kitchen with quartz flooring, a range of wall & base units and space for appliances, a generous Living Dining Room with sliding doors out to the rear garden, two good sized Bedrooms both benefitting from wardrobe space and a modern Family Bathroom with underfloor heating.

Outside, the private, enclosed rear garden is mainly laid to lawn with a decked area and side access leading out to the property's off-road, block paved driveway, providing parking for 2 cars.







**Tax Band: D**

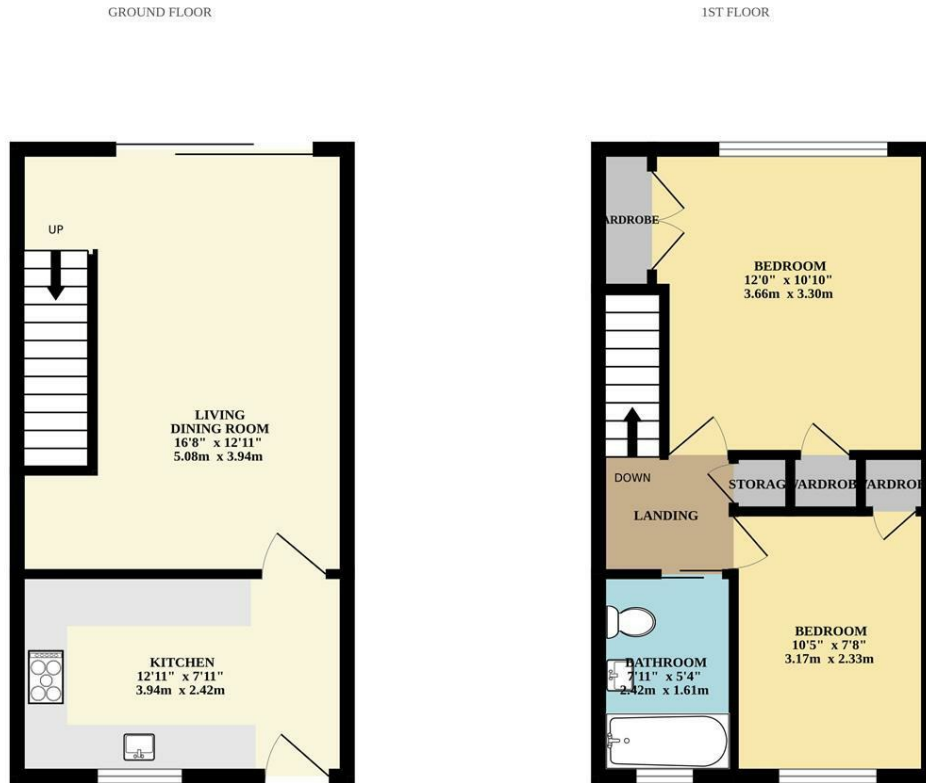
**Council:** Stratford District Council

**Tenure:** Leasehold





# Floor Plan



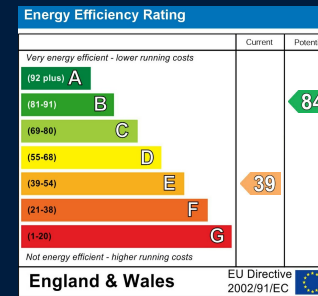
Whilst every attempt has been made to ensure the accuracy of the floorplan contained here, measurements of doors, windows, rooms and any other items are approximate and no responsibility is taken for any error, omission or mis-statement. This plan is for illustrative purposes only and should be used as such by any prospective purchaser. The services, systems and appliances shown have not been tested and no guarantee as to their operability or efficiency can be given.

Made with Metropix ©2024

## Map



## Energy Performance



Jeremy McGinn & Co

These particulars, whilst believed to be accurate are set out as a general outline only for guidance and do not constitute any part of an offer or contract. Intending purchasers should not rely on them as statements of representation of fact, but must satisfy themselves by inspection or otherwise as to their accuracy. No person in this firms employment has the authority to make or give any representation or warranty in respect of the property.

**55 Ely Street, Stratford Upon Avon, Warwickshire, CV37 6LN**  
**Tel: 01789 868168 Email: [stratford@jeremymcginns.com](mailto:stratford@jeremymcginns.com) [www.jeremymcginns.com](http://www.jeremymcginns.com)**