



Rugby Road , Cubbington

Leamington Spa, CV32 7JQ

Jeremy
McGinn & Co 

Guide Price £275,000

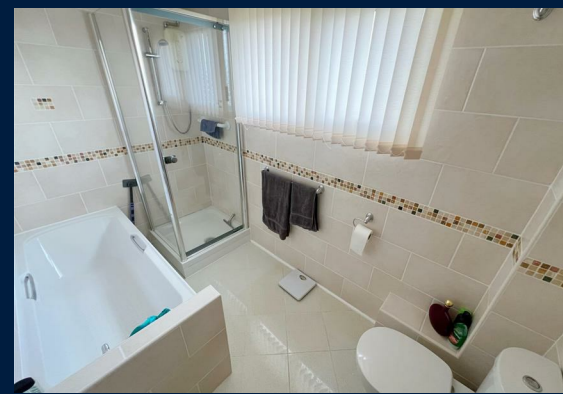


A chance to acquire a traditional mid-terrace home, situated within a popular residential area within easy reach of Leamington Spa.

The property is for sale with No Onward Chain and is set back behind a very generous lawned frontage. The internal accommodation is arranged over two floors and briefly comprises; Entrance Hallway, Fitted Kitchen Breakfast Room, Living Dining Room, Utility Room/Ground Floor Cloakroom, First Floor Landing, Generous Master Bedroom with Fitted Wardrobes, Second Double Bedroom and Four Piece Family Bathroom.

The rear garden is private and low maintenance and benefits from rear access via a gated alleyway.



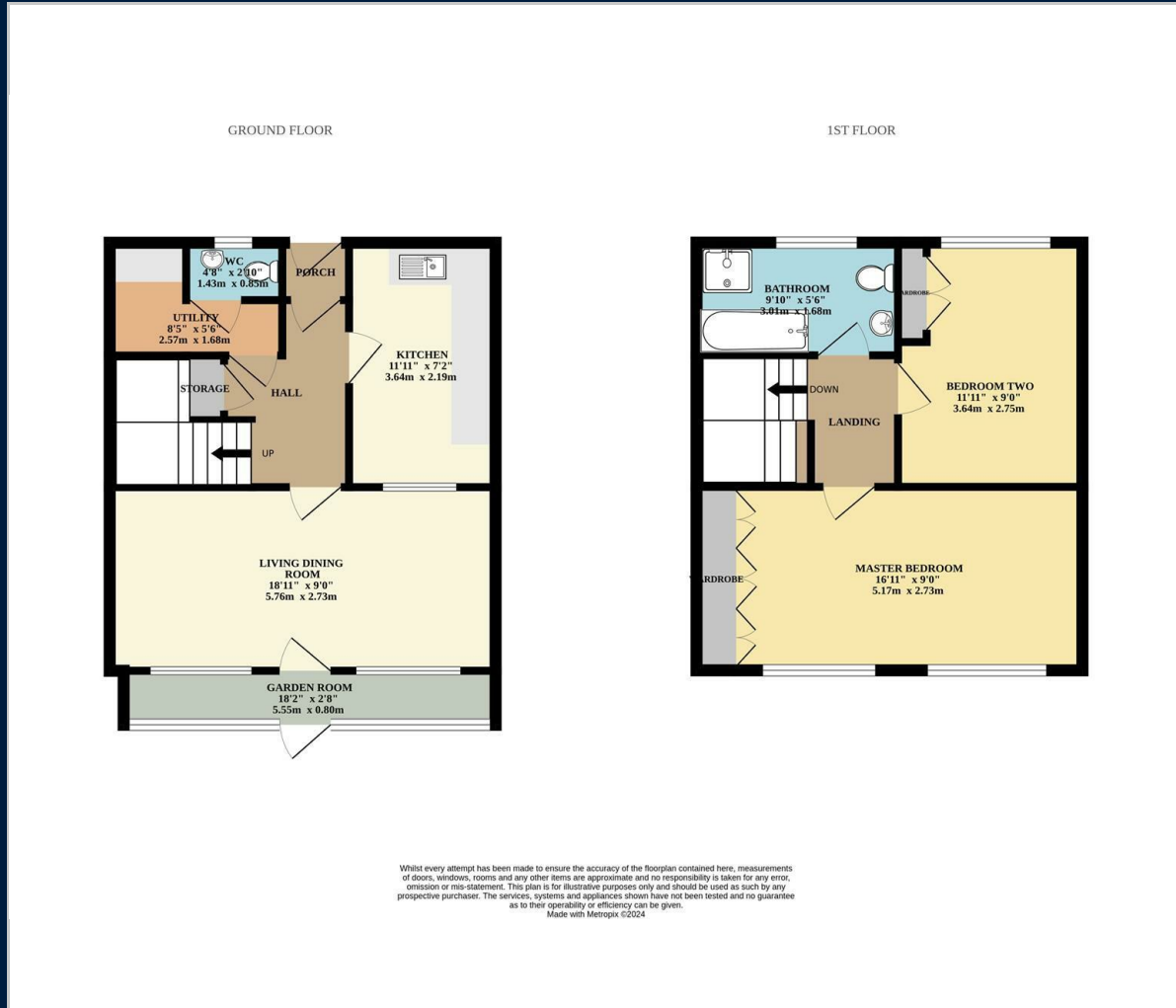


Tax Band: C

Council: Warwick District Council

Tenure: Freehold

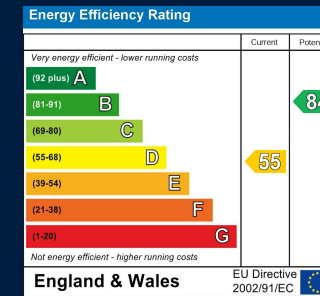
Floor Plan



Map



Energy Performance



These particulars, whilst believed to be accurate are set out as a general outline only for guidance and do not constitute any part of an offer or contract. Intending purchasers should not rely on them as statements of representation of fact, but must satisfy themselves by inspection or otherwise as to their accuracy. No person in this firms employment has the authority to make or give any representation or warranty in respect of the property.

55 Ely Street, Stratford Upon Avon, Warwickshire, CV37 6LN
 Tel: 01789 868168 Email: stratford@jeremymcginns.com www.jeremymcginns.com