



# Bearley Road , Aston Cantlow

Henley-In-Arden, B95 6HS

Jeremy  
McGinn & Co 



# Guide Price £285,000



For sale with NO ONWARD CHAIN, a chance to acquire an attractive, end-terrace cottage, situated in the pretty Warwickshire village of Aston Cantlow, ideally located to take advantage of the local amenities and those further afield in nearby Stratford-upon-Avon, Henley in Arden & Alcester.

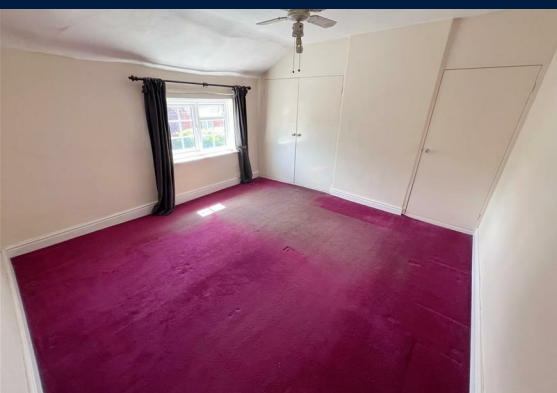
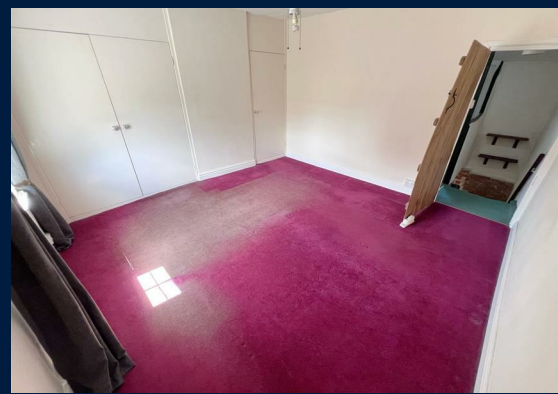
This charming cottage benefits from characterful extended accommodation and also benefits from en-block GARAGE to the rear.

The accommodation briefly comprises; Sitting room with feature fireplace and inset log burner, Dining Area to the rear with an extended Fitted Kitchen and a side door leading outside. To the first floor, there are two double bedrooms, with the Master benefitting from double fitted wardrobes and a three-piece family bathroom.

Externally, the property offers a long narrow garden space, with small patio area and lawn. The garage is located at the end of the garden, accessed via a gravelled driveway (also used by owners of the adjoining garages), with an off-road parking space in front. There is also on road parking available to the front of the property.





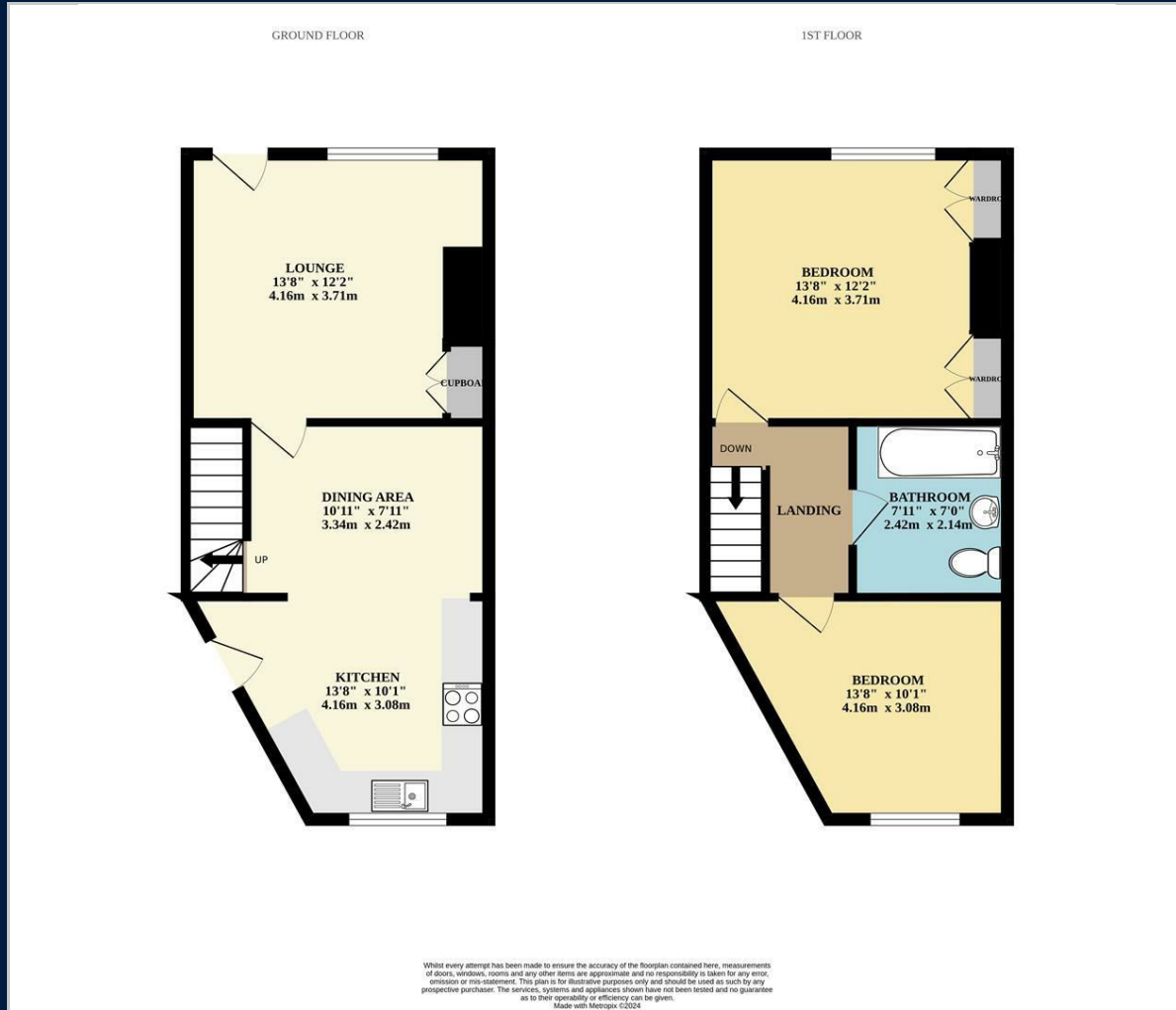


**Tax Band: B**

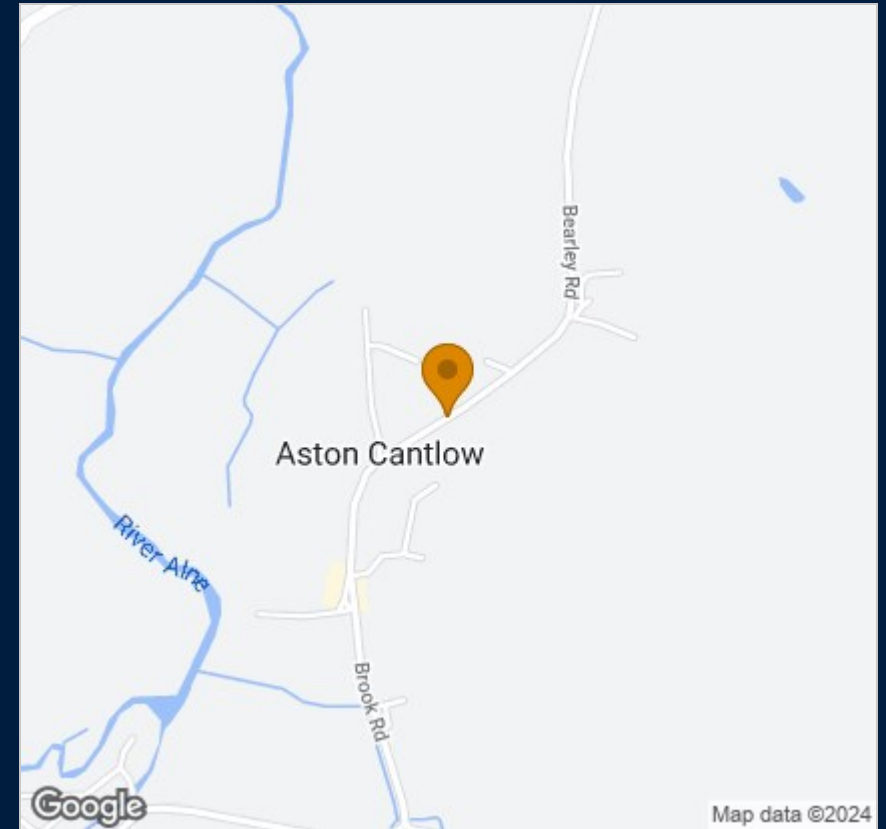
**Council: Stratford upon Avon District Council**

**Tenure: Freehold**

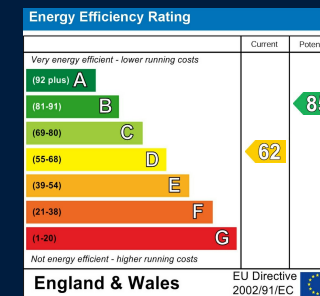
# Floor Plan



# Map



# Energy Performance



These particulars, whilst believed to be accurate are set out as a general outline only for guidance and do not constitute any part of an offer or contract. Intending purchasers should not rely on them as statements of representation of fact, but must satisfy themselves by inspection or otherwise as to their accuracy. No person in this firm's employment has the authority to make or give any representation or warranty in respect of the property.

55 Ely Street, Stratford Upon Avon, Warwickshire, CV37 6LN  
 Tel: 01789 868168 Email: stratford@jeremymcginns.com www.jeremymcginns.com