



Park Road ,
Stratford-upon-Avon, CV37 0AT

Jeremy
McGinn & Co 

Offers Over £237,950



For sale with No Onward Chain, a chance to acquire a traditional end-terrace home. Conveniently located just a short stroll from the Maybird Shopping Centre, Stratford Train Station, local supermarkets and schools and the Town Centre itself.

This property would make a fantastic buy-to-let or first time buy and being one of only a few end terrace properties on the road, has a huge amount of scope for potential extension, whether that be single or double storey (STPP). Internally, the property is in reasonable condition and briefly comprises; Living Room, Kitchen Dining Room with storage cupboard, Ground Floor Bathroom, First Floor Landing, Three Bedrooms and a First Floor WC. The property also offers a very spacious loft.

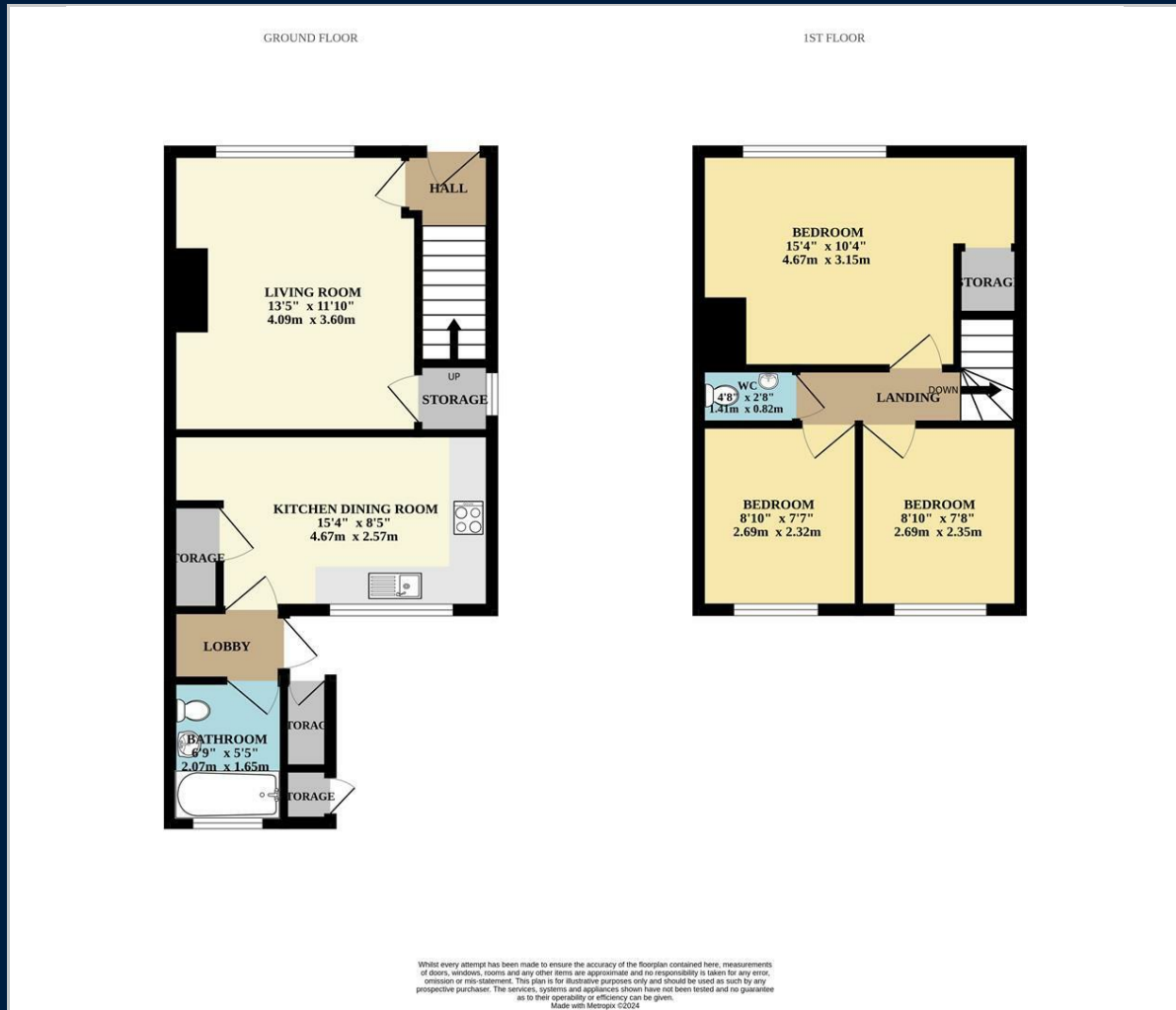
Outside, the rear garden reaches approximately 100ft. long and is mainly laid to lawn, with a substantial patio area, outbuildings and a side access. To the front, the property has a good frontage, which could potentially be used for parking a car.



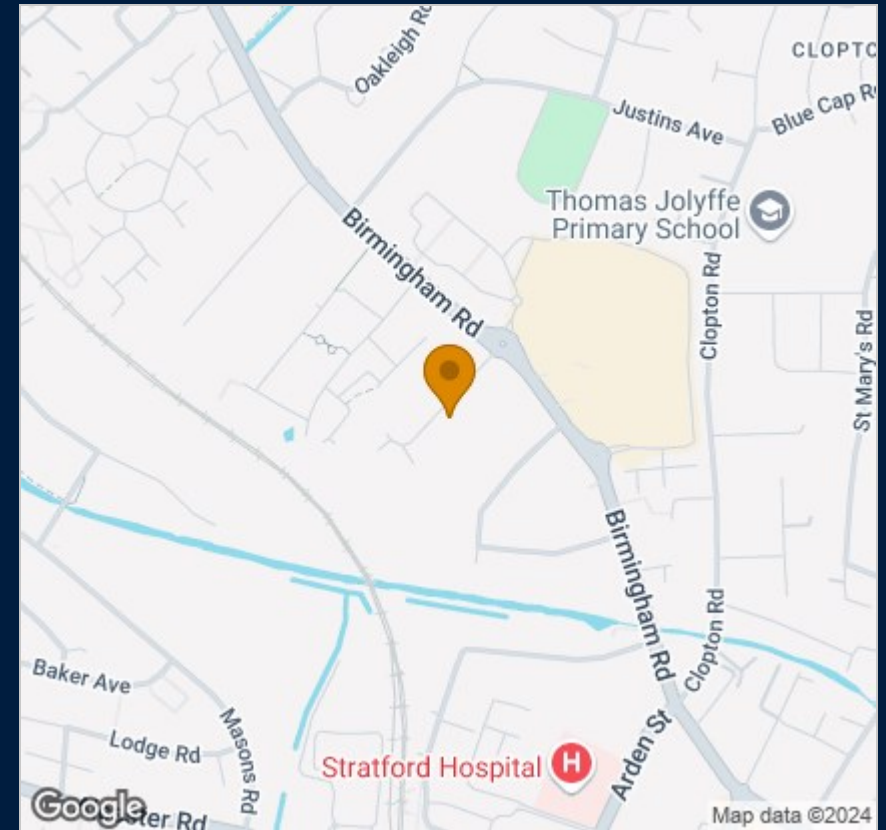


Tax Band:
Council:
Tenure: Freehold

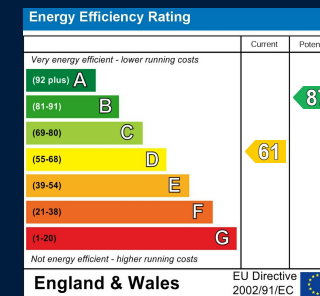
Floor Plan



Map



Energy Performance



These particulars, whilst believed to be accurate are set out as a general outline only for guidance and do not constitute any part of an offer or contract. Intending purchasers should not rely on them as statements of representation of fact, but must satisfy themselves by inspection or otherwise as to their accuracy. No person in this firms employment has the authority to make or give any representation or warranty in respect of the property.

55 Ely Street, Stratford Upon Avon, Warwickshire, CV37 6LN
 Tel: 01789 868168 Email: stratford@jeremymcginns.com www.jeremymcginns.com