



The Circuit , Dodwell Park
Stratford-Upon-Avon, CV37 9SS

Jeremy
McGinn & Co 

Guide Price £160,000



20 The Circuit comprises a Stately Albion park home built in the 1990s sited on the highly popular Dodwell Park development. Measuring 36' x 20' The property offers plenty of light and airy living space with central heating and uPVC double glazing making the very best comfort and economy.

Hallway, Living Room, Dining/Kitchen, Master Bedroom with Fitted Wardrobes, Guest Bedroom with Fitted Wardrobes & Bathroom.

Outside there is a newly laid block paved driveway and garden with useful Shed.

Ground rent £207.61 pcm

Available Immediately



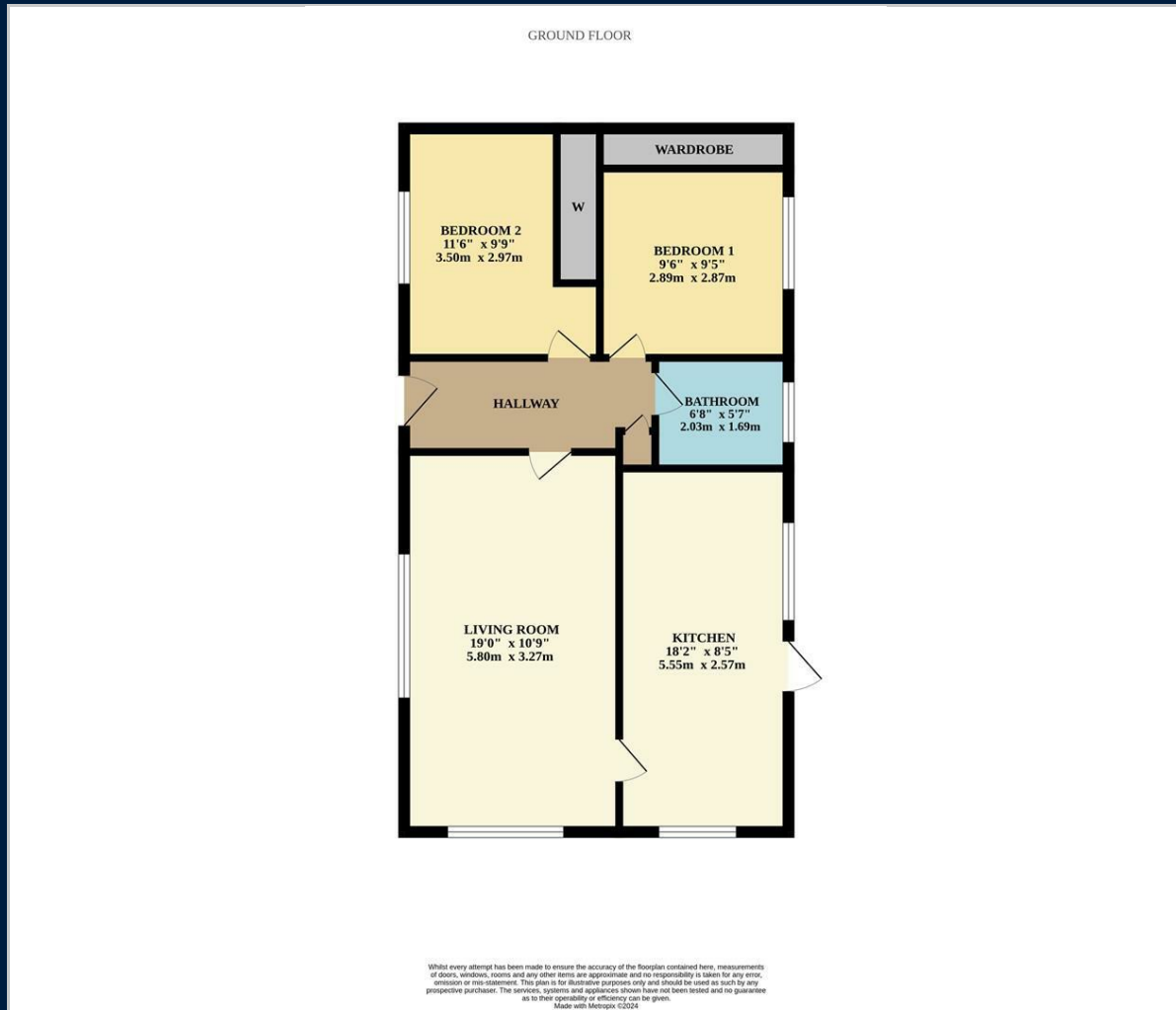


Tax Band: A

Council: Stratford upon Avon District Council

Tenure: Leasehold

Floor Plan



Map



Energy Performance

| Energy Efficiency Rating | | Current | Potential |
|--|--|-------------------------|-----------|
| <i>Very energy efficient - lower running costs</i> | | | |
| (92 plus) A | | | |
| (81-91) B | | | |
| (69-80) C | | | |
| (55-68) D | | | |
| (39-54) E | | | |
| (21-38) F | | | |
| (1-20) G | | | |
| <i>Not energy efficient - higher running costs</i> | | | |
| England & Wales | | EU Directive 2002/91/EC | |



These particulars, whilst believed to be accurate are set out as a general outline only for guidance and do not constitute any part of an offer or contract. Intending purchasers should not rely on them as statements of representation of fact, but must satisfy themselves by inspection or otherwise as to their accuracy. No person in this firm's employment has the authority to make or give any representation or warranty in respect of the property.

55 Ely Street, Stratford Upon Avon, Warwickshire, CV37 6LN
Tel: 01789 868168 Email: stratford@jeremymcginns.com www.jeremymcginns.com