



# St. Michaels Close , South Littleton

Evesham, WR11 8FZ

Jeremy  
McGinn & Co



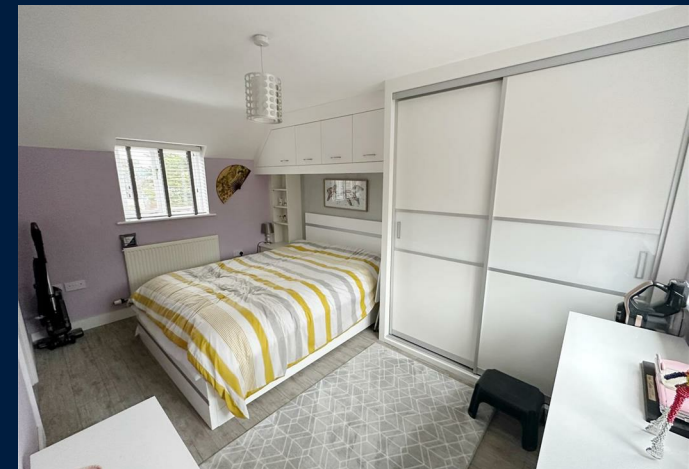
# Offers In Excess Of £600,000



14 St Michaels Close sits on an exclusive development right in the heart of the beautiful village of South Littleton set at the top end of the Vale of Evesham.

The property comprises a substantial detached house with double garage and offers genuinely spacious family accommodation which has been extended since originally built to now provide well laid out living space with double glazing & gas fired central heating: - Vestibule Porch, Reception Hall, Guest Cloaks/WC, Study/Snug, Large Living Room with inglenook fireplace and fitted log burner, Separate Dining Room, Fully fitted Kitchen with integrated appliances including double oven, further oven with warming drawer, 5 burner gas hob, extractor hood, dishwasher, fridge & freezer, Breakfast Room with under floor heating and bi-fold doors leading out onto the terrace, Utility Room with butlers sink, Gallery Landing, Master Bedroom with Ensuite Bathroom, Guest Bedroom with Ensuite Shower Room, 2 Further Bedrooms & Family Bathroom with whirlpool bath & separate shower enclosure.

Outside there is a Double Garage and good sized enclosed gardens with large paved terrace offering plenty of outside dining space and mainly lawned gardens.







**Tax Band: G**

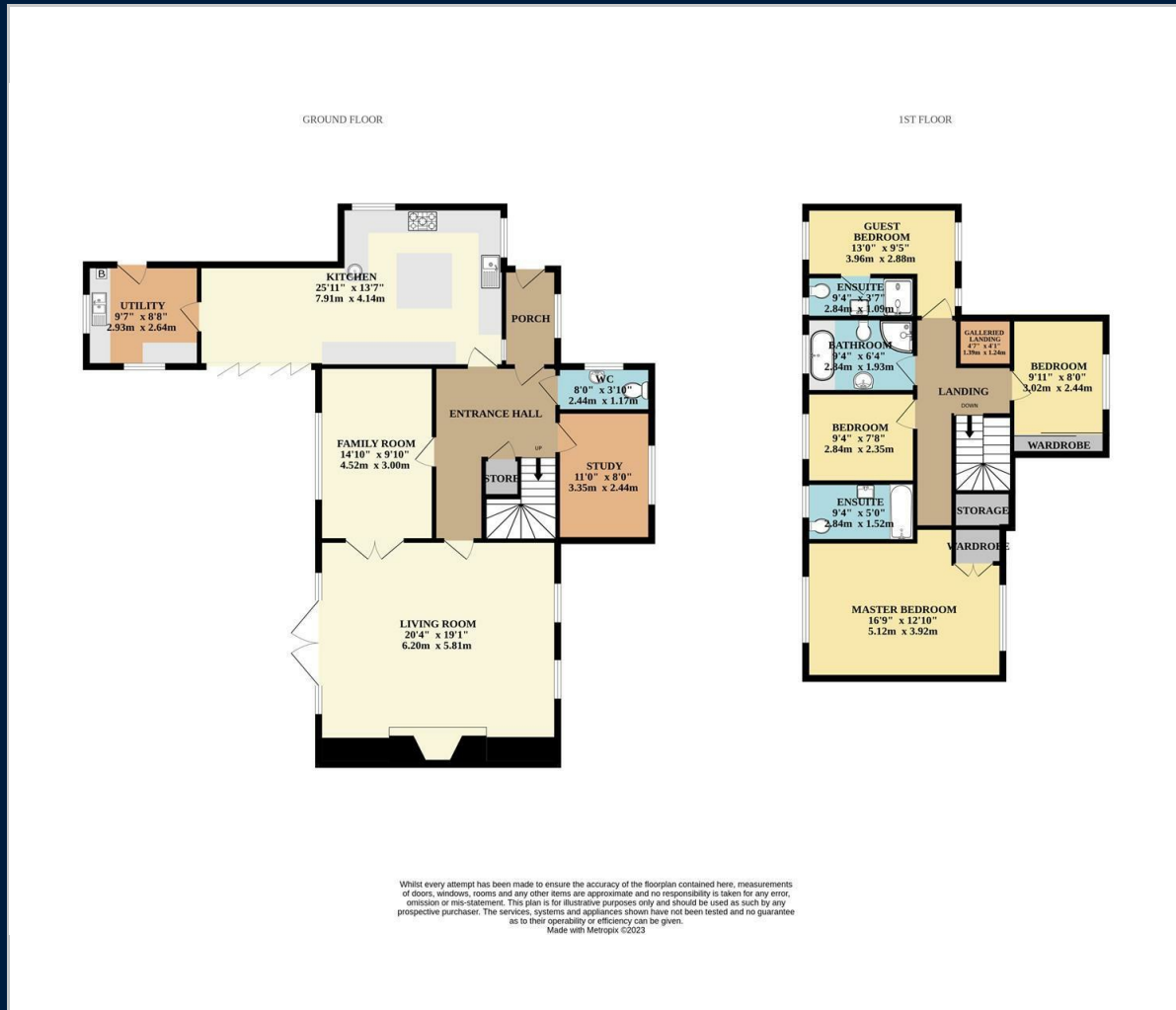
**Council: Wychavon District Council**

**Tenure: Freehold**

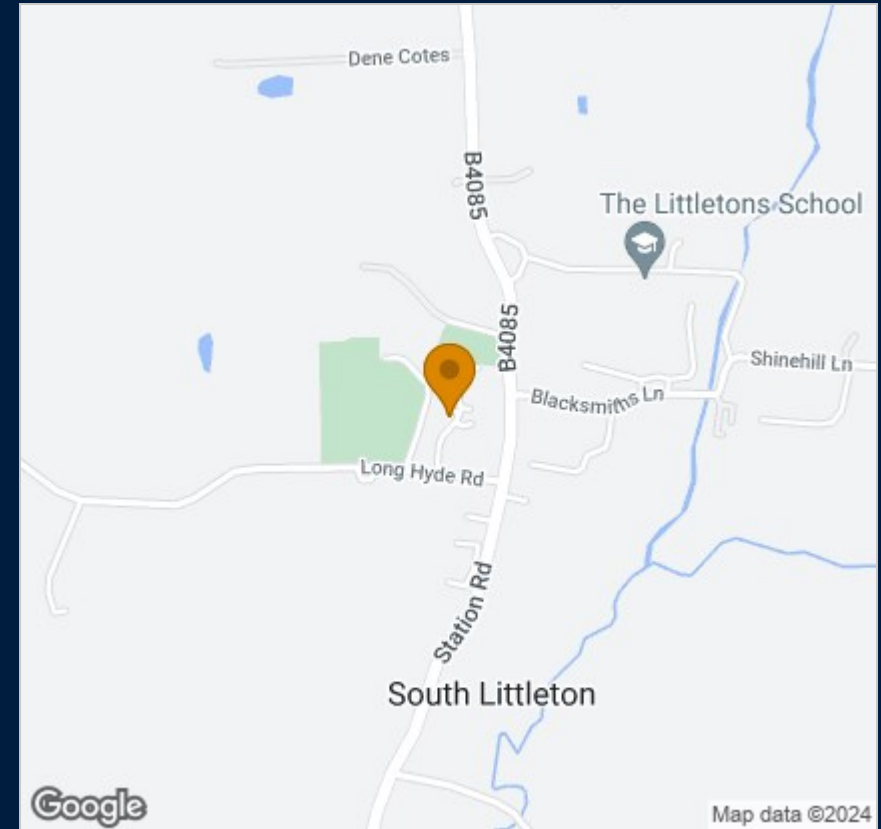
South Littleton is the largest of the 3 Littletons being surrounded by beautiful countryside and set about half way between Evesham and Bidford on Avon. Day to day amenities are well catered for within the village whilst Evesham is close at hand to offer more comprehensive facilities. This really is a fabulous family home situated on a small exclusive development with the local church tower providing a pleasant backdrop.



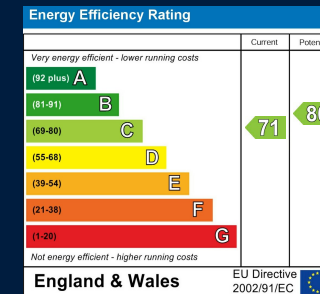
# Floor Plan



# Map



# Energy Performance



These particulars, whilst believed to be accurate are set out as a general outline only for guidance and do not constitute any part of an offer or contract. Intending purchasers should not rely on them as statements of representation of fact, but must satisfy themselves by inspection or otherwise as to their accuracy. No person in this firm's employment has the authority to make or give any representation or warranty in respect of the property.

55 Ely Street, Stratford Upon Avon, Warwickshire, CV37 6LN  
 Tel: 01789 868168 Email: stratford@jeremymcginns.com www.jeremymcginns.com