



Stratford Road , Wootton Wawen

Henley-in-Arden, B95 6BD

Jeremy
McGinn & Co

Offers Over £365,000



Offered for sale with NO ONWARD CHAIN, a most rare opportunity to acquire a delightful Grade II Listed semi-detached barn conversion, enjoying a fabulous location at Manor Farm, in the sought after village of Wootton Wawen, with its famous Saxon Church. The village offers a wealth of amenities including a post office, popular village shop, primary school, two public houses and rail services to Stratford upon Avon and Birmingham, making this an ideal base from which to commute.

The property itself comprises a semi-detached barn conversion, completed to a very high standard with every sympathy being given to maintaining the character and charm of the original building, whilst at the same time creating a unique contemporary feel. With oak framed double glazing throughout & LPG Gas, the property offers a Entrance Hallway with stairs rising to first floor, Generous Sitting Room, Fitted Kitchen Breakfast Room, Ground Floor WC, two Double Bedrooms and Bathroom.

Outside, the barn occupies a fabulous plot with a private patio area and pleasant and sizeable rear garden, which is mainly laid to lawn. To the side of the property, there is parking for 2 cars.



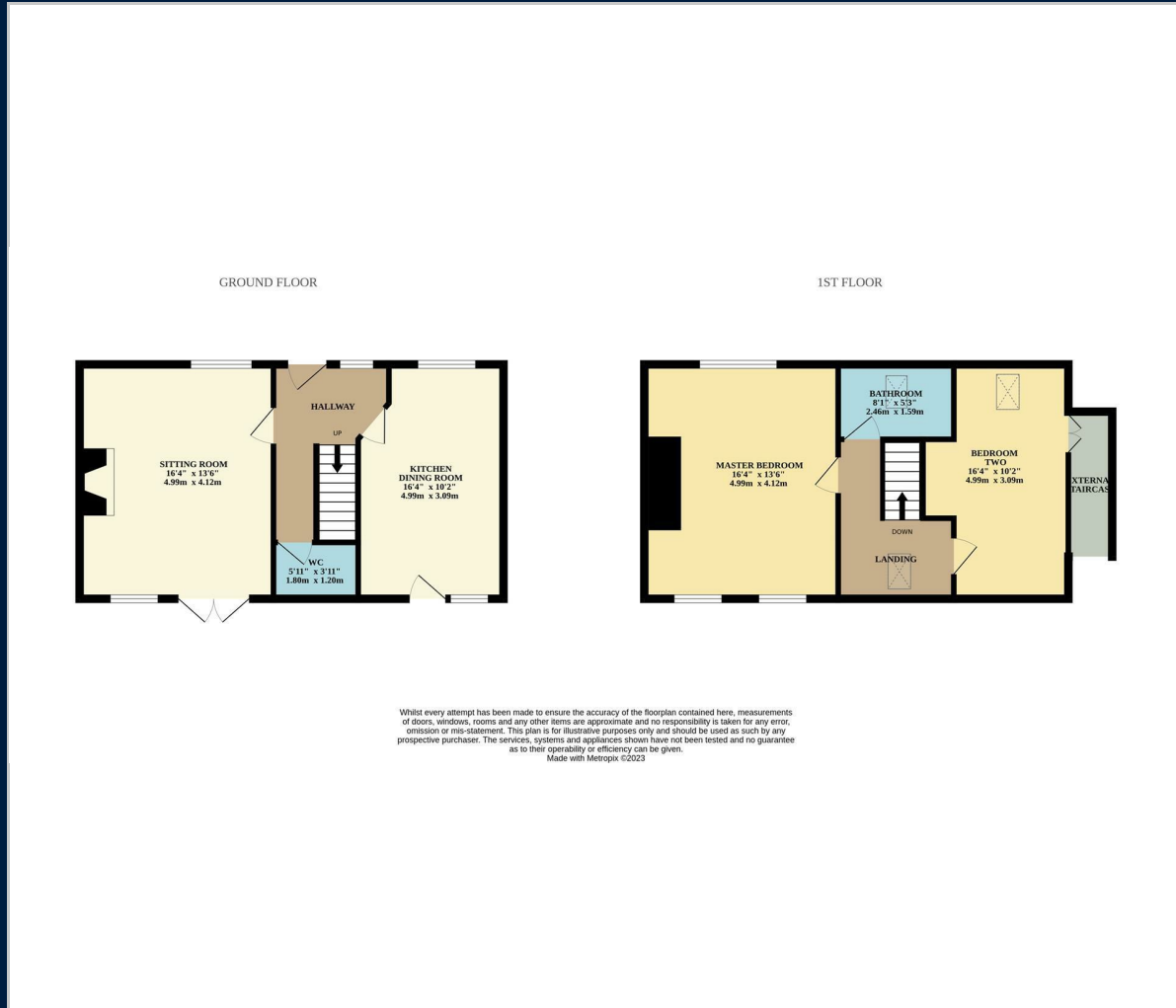


Tax Band: D

Council: Stratford District Council

Tenure: Freehold

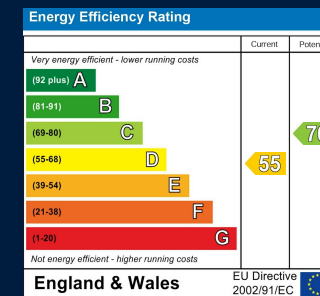
Floor Plan



Map



Energy Performance



These particulars, whilst believed to be accurate are set out as a general outline only for guidance and do not constitute any part of an offer or contract. Intending purchasers should not rely on them as statements of representation of fact, but must satisfy themselves by inspection or otherwise as to their accuracy. No person in this firm's employment has the authority to make or give any representation or warranty in respect of the property.

55 Ely Street, Stratford Upon Avon, Warwickshire, CV37 6LN
 Tel: 01789 868168 Email: stratford@jeremymcginns.com www.jeremymcginns.com