

Ben Allman
Estate & Letting Agents



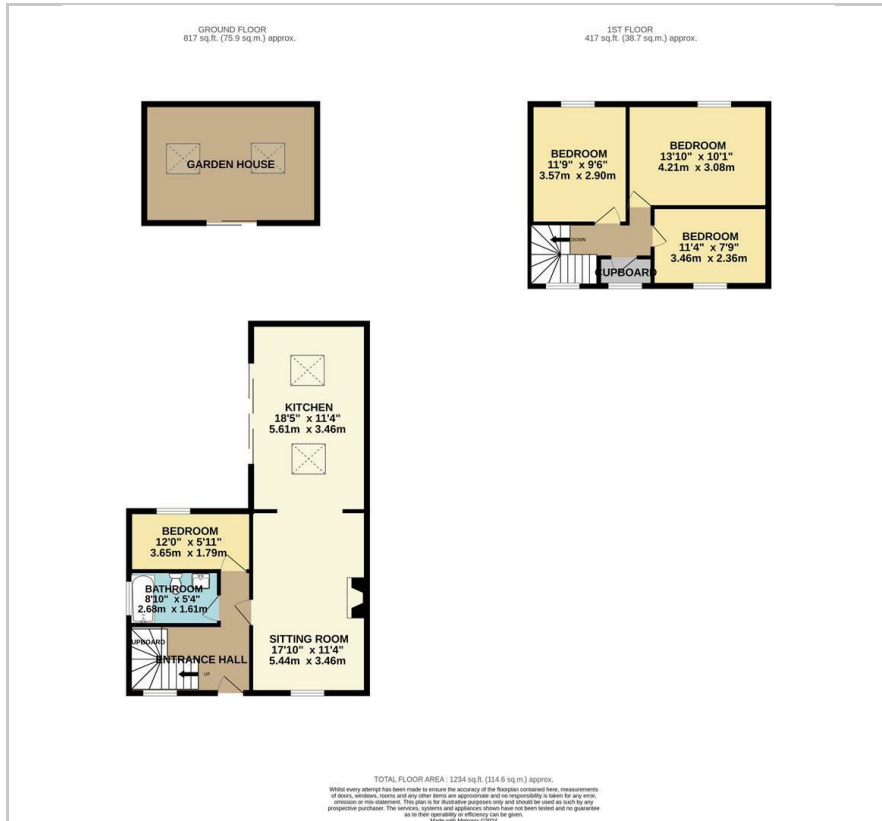
72 Chamberlin Road

, Norwich, NR3 3LY

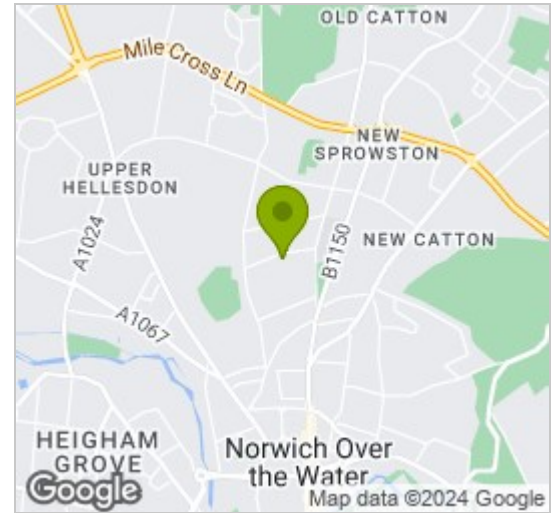
Guide price £450,000



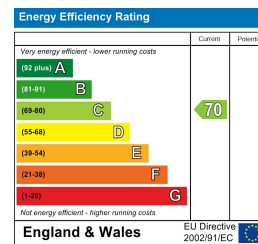
Floor Plan



Area Map



Energy Efficiency Graph



Viewing

Please contact our Ben Allman Estate Agents Office on 01603 555577 if you wish to arrange a viewing appointment for this property or require further information.

- Vendors Have Found
- Extensively Renovated Throughout
- Four Bedrooms
- Newly Fitted Kitchen With Quartz Worktops And Integrated Appliances
- Large Rear Garden With Garden Room
- Bifold Doors To Kitchen And Garden Room
- Driveway
- More Photos To Follow



This charming 1920's semi-detached house has been thoughtfully renovated and extended by its current owners. Situated off St Clements Hill, the property features off-road parking and a spacious front garden, providing ample distance from the road for added privacy and tranquillity.

Downstairs the property offers an open plan layout with a 5.4m sitting room and a further 5.6m modern kitchen with skylights, full quartz worktops, fully integrated goods and bifold doors leading to the rear garden. The ground floor is further complimented by a bathroom with floor to ceiling tiles, and a 4th bedroom.

Upstairs, there are 3 generous bedrooms which are currently in the final stages of being completed, and a further storage cupboard. Due to the elevation of the property, city views can be enjoyed from the rear windows.

Outside, considerable time and expense has gone in to creating this outstanding garden, which includes large paving, artificial grass and a garden room with power, bifold doors and skylights.



These particulars, whilst believed to be accurate are set out as a general outline only for guidance and do not constitute any part of an offer or contract. Intending purchasers should not rely on them as statements of representation of fact, but must satisfy themselves by inspection or otherwise as to their accuracy. No person in this firm's employment has the authority to make or give any representation or warranty in respect of the property.