

Ben Allman
Estate & Letting Agents



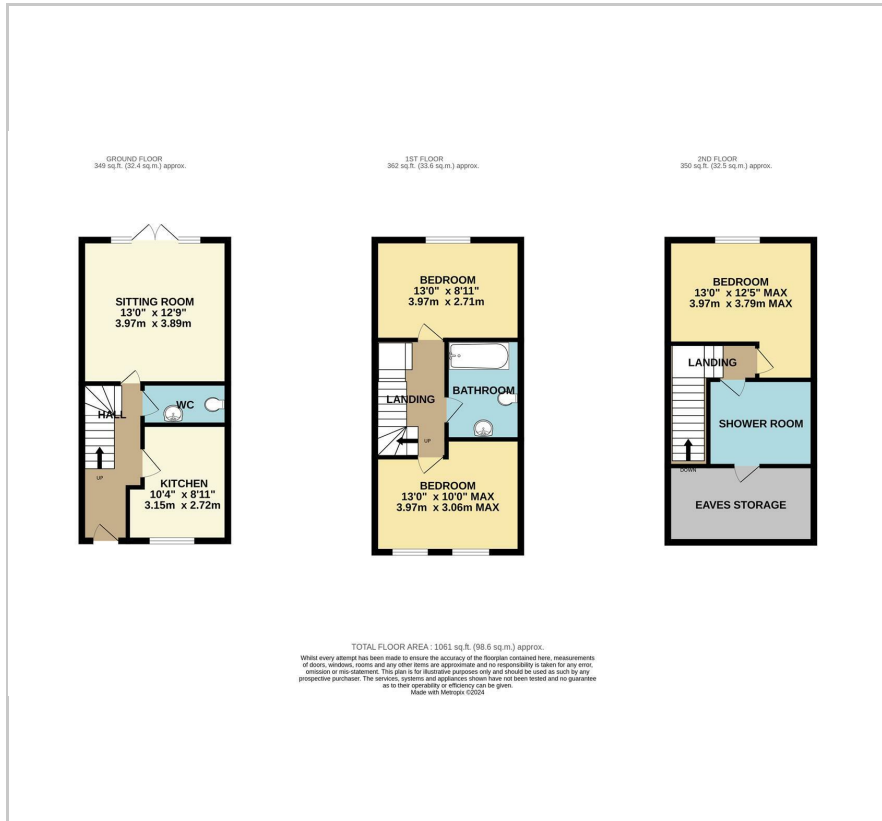
116a Silver Road

, Norwich, NR3 4TF

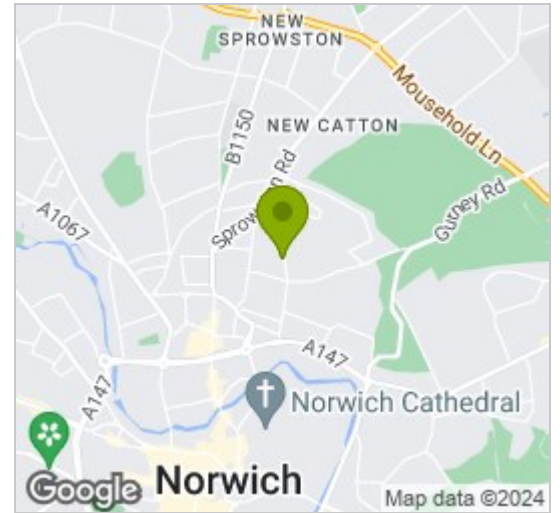
Guide price £279,995



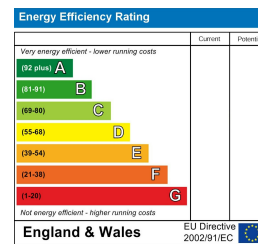
Floor Plan



Area Map



Energy Efficiency Graph



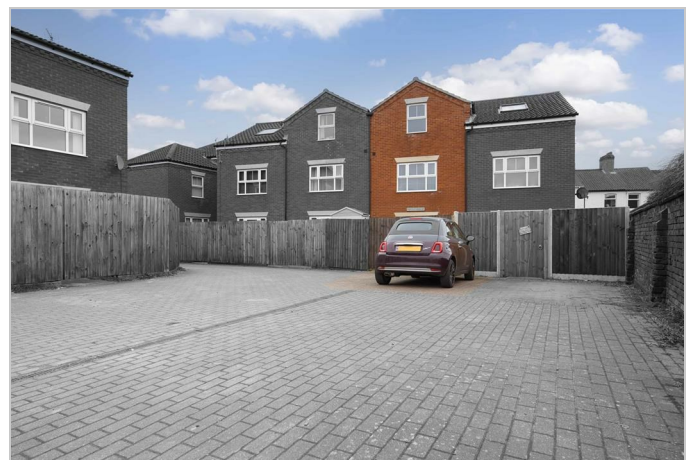
Viewing

Please contact our Ben Allman Estate Agents Office on 01603 555577 if you wish to arrange a viewing appointment for this property or require further information.

- Set Back From The Road
- 3 Storey Townhouse
- 3 Double Bedrooms
- 1 Bathroom, 1 Shower Room and 1 Cloakroom
- Enclosed Garden
- Allocated Parking Space
- Walking Distance To Norwich City Centre
- Large Eaves Storage
- EPC - C (79)

Built in 2011, we present this 3 bedroom townhouse with accommodation over three levels. Situated within just a short walk to Norwich City Centre, this property is well-positioned for those that require easy access to Norwich or the mainline train station, which offers direct routes to London and Cambridge.

The property offers a well-tended courtyard garden with outside tap and an allocated parking space directly to the rear. The ground floor comprises of a kitchen, cloakroom, and large sitting room with electric fireplace and a patio door to the rear garden. The first floor offers 2 double bedrooms (1 with large fitted wardrobes) and a bathroom. And then the 2nd floor includes a master bedroom with ceiling fan and remote control ceiling light alongside a large shower room and plenty of eaves storage.



These particulars, whilst believed to be accurate are set out as a general outline only for guidance and do not constitute any part of an offer or contract. Intending purchasers should not rely on them as statements of representation of fact, but must satisfy themselves by inspection or otherwise as to their accuracy. No person in this firm's employment has the authority to make or give any representation or warranty in respect of the property.