

Ben Allman
Estate & Letting Agents



89 Linacre Avenue
Sprowston, Norwich, NR7 8JS
Guide price £260,000



89 Linacre Avenue, Sprowston, Norwich, NR7 8JS

Guide Price £260,000 - £280,000* Situated in a highly sought-after and convenient location, this well-presented two-bedroom detached chalet has been thoughtfully reconfigured from its original three-bedroom layout to allow more flexible living accommodation.

The property boasts a generous L-shaped living room extending to around 6.15m. The entrance hall gives access to the bathroom, living room, airing cupboard, open understairs storage and a newly fitted kitchen, which in turn leads to a conservatory overlooking the rear garden.

The first floor comprises two well-proportioned double bedrooms, with the principal bedroom benefiting from fitted wardrobes and additional off-bedroom eaves storage.

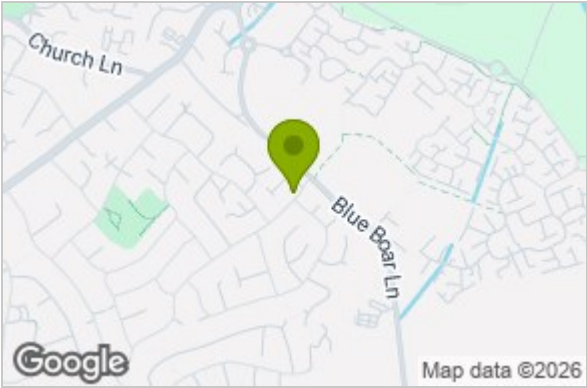
Externally, the property enjoys ample off-road parking via the driveway, with scope to extend this into the front garden if further parking is required. To the rear is a fully enclosed garden offering a good degree of privacy, along with access to a single garage.



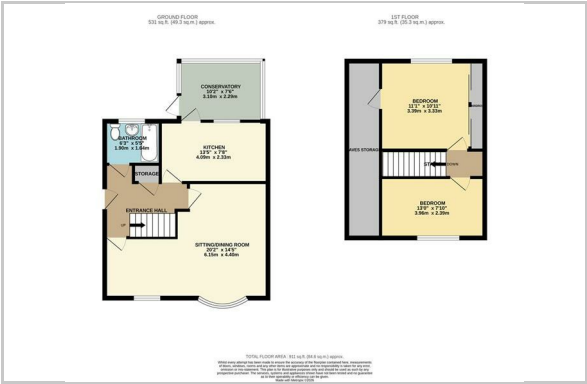
Location



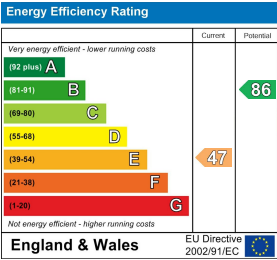
Area Map



Floor Plan



Energy Efficiency Graph



These particulars, whilst believed to be accurate are set out as a general outline only for guidance and do not constitute any part of an offer or contract. Intending purchasers should not rely on them as statements of representation of fact, but must satisfy themselves by inspection or otherwise as to their accuracy. No person in this firms employment has the authority to make or give any representation or warranty in respect of the property.